



[Go to Product page](#)

Datasheet for ABIN474710
anti-CD1c antibody (FITC)

1 Image

Overview

Quantity:	100 tests
Target:	CD1c (CD1C)
Reactivity:	Human
Host:	Mouse
Clonality:	Monoclonal
Conjugate:	This CD1c antibody is conjugated to FITC
Application:	Flow Cytometry (FACS), Immunoprecipitation (IP)

Product Details

Immunogen:	Human CD1c
Clone:	L161
Isotype:	IgG1
Purification:	Affinity purified

Target Details

Target:	CD1c (CD1C)
Alternative Name:	CD1C (CD1C Products)
Background:	Name/Gene ID: CD1C

Synonyms: CD1C, BDCA1, CD1, CD1c molecule, CD1C antigen, c polypeptide, CD1c antigen, R7

Target Details

Gene ID: 911

UniProt: [P29017](#)

Application Details

Application Notes: Approved: Flo, IP

Usage: This L161 antibody has been pre-titrated and tested by flow cytometric analysis on normal human peripheral blood cells. This can be used at 5 μ L (0.06 μ g) per test. A test is defined as the amount (μ g) of antibody that will stain a cell sample in a final volume of 100 μ L. Cell number should be determined empirically but can range from 10^5 to 10^8 cells/test. The applications listed have been tested for the unconjugated form of this product. Other forms have not been tested.

Comment: Target Species of Antibody: Human

Restrictions: For Research Use only

Handling

Format: Liquid

Concentration: Lot specific

Buffer: PBS, pH 7.2, \leq 0.09 % sodium azide

Preservative: Sodium azide

Precaution of Use: This product contains Sodium azide: a POISONOUS AND HAZARDOUS SUBSTANCE which should be handled by trained staff only.

Handling Advice: Do not freeze. Product is photosensitive and should be protected from light.

Storage: 4 $^{\circ}$ C

Storage Comment: Store at 4 $^{\circ}$ C. Do not freeze. Protect from light.

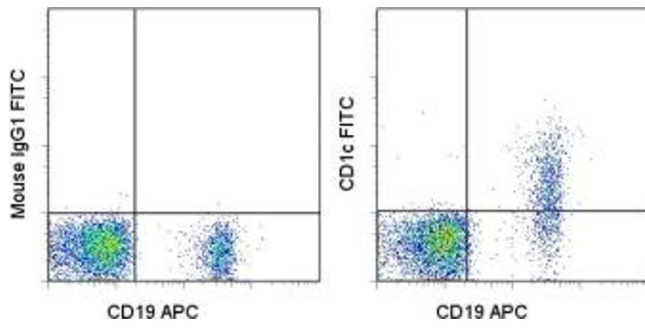


Image 1.