

Datasheet for ABIN474793
anti-FCER2 antibody (FITC)[Go to Product page](#)

2 Images

Overview

Quantity:	100 tests
Target:	FCER2
Reactivity:	Human
Host:	Mouse
Clonality:	Monoclonal
Conjugate:	This FCER2 antibody is conjugated to FITC
Application:	Flow Cytometry (FACS), Immunohistochemistry (IHC), Immunohistochemistry (Frozen Sections) (IHC (fro))

Product Details

Immunogen:	Human FCER2
Clone:	EBVCS2
Isotype:	IgG1
Purification:	Affinity purified

Target Details

Target:	FCER2
Alternative Name:	FCER2 / CD23 (FCER2 Products)
Background:	Name/Gene ID: FCER2

Synonyms: FCER2, CD23 antigen, CD23A, CLEC4J, CD23, Fc-epsilon-RII, IGEBF, Lymphocyte IgE

Target Details

	receptor, BLAST-2, FCE2
Gene ID:	2208
UniProt:	P06734
Pathways:	Regulation of Leukocyte Mediated Immunity , Positive Regulation of Immune Effector Process

Application Details

Application Notes:	Approved: Flo, IHC, IHC-Fr Usage: The EBVCS2 antibody has been pre-titrated and tested by flow cytometric analysis of human peripheral blood leukocytes. This can be used at 5 µL (0.25 µg)/per test. A test is defined as the amount (ug)/test of antibody that will stain a cell sample in a final volume of 100 µL. Cell number should be determined empirically but can range from 10 ⁵ to 10 ⁸ cells/test. The applications listed have been tested for the unconjugated form of this product. Other forms have not been tested.
Comment:	Target Species of Antibody: Human
Restrictions:	For Research Use only

Handling

Format:	Liquid
Concentration:	Lot specific
Buffer:	PBS, pH 7.2, 150 mM sodium chloride, 0.09 % sodium azide, 0.2 % BSA
Preservative:	Sodium azide
Precaution of Use:	This product contains Sodium azide: a POISONOUS AND HAZARDOUS SUBSTANCE which should be handled by trained staff only.
Handling Advice:	Do not freeze. Product is photosensitive and should be protected from light.
Storage:	4 °C
Storage Comment:	Store at 4°C. Do not freeze. Protect from light.

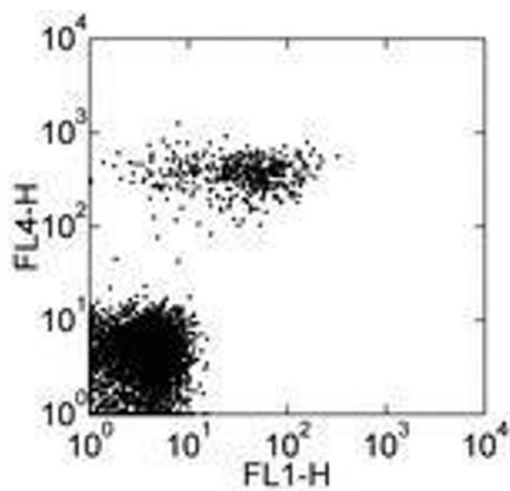


Image 1.

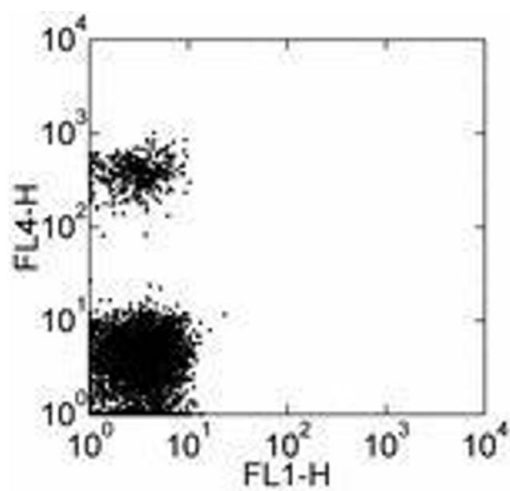


Image 2.