

Datasheet for ABIN475631 **anti-LYVE1 antibody**



[Go to Product page](#)

1 Image

Overview

Quantity:	100 µg
Target:	LYVE1
Reactivity:	Mouse
Host:	Rat
Clonality:	Monoclonal
Conjugate:	This LYVE1 antibody is un-conjugated
Application:	Immunohistochemistry (IHC), Flow Cytometry (FACS), Immunohistochemistry (Frozen Sections) (IHC (fro))

Product Details

Immunogen:	Mouse LYVE1
Clone:	ALY7
Isotype:	IgG1
Purification:	Affinity purified

Target Details

Target:	LYVE1
Alternative Name:	LYVE1 / LYVE-1 (LYVE1 Products)
Background:	Name/Gene ID: LYVE1

Synonyms: LYVE1, CRSBP-1, CRSBP1, Hyaluronic acid receptor, LYVE-1, XLKD1, HAR

Target Details

Gene ID: 10894

Pathways: [Glycosaminoglycan Metabolic Process](#)

Application Details

Application Notes: Approved: Flo, IHC, IHC-Fr

Usage: This ALY7 antibody has been tested by flow cytometric analysis of transfected cell line or immunofluorescent microscopy of cryosections of mouse intestine. This can be used at less than or equal to 0.125 µg per million cells in a 100 µL total staining volume for flow cytometry and 2.5 µg/mL for immunofluorescent microscopy. It is recommended that the antibody be carefully titrated for optimal performance in the assay of interest.

Comment: Target Species of Antibody: Mouse

Restrictions: For Research Use only

Handling

Format: Liquid

Concentration: Lot specific

Buffer: Aqueous buffer, 0.09 % sodium azide, contains stabilizer if necessary

Preservative: Sodium azide

Precaution of Use: This product contains Sodium azide: a POISONOUS AND HAZARDOUS SUBSTANCE which should be handled by trained staff only.

Handling Advice: avoid freezing and store undiluted.

Storage: 4 °C

Storage Comment: Store at 4°C, avoid freeze-thaw cycles.

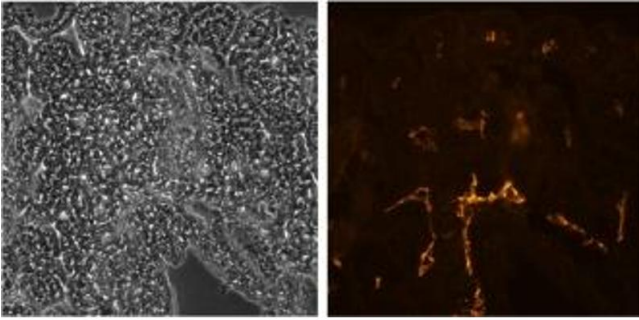


Image 1.