

Datasheet for ABIN476107  
**anti-KLRK1 antibody**



[Go to Product page](#)

1 Image

## Overview

Quantity:	50 µg
Target:	KLRK1
Reactivity:	Mouse
Host:	Rat
Clonality:	Monoclonal
Conjugate:	This KLRK1 antibody is un-conjugated
Application:	Flow Cytometry (FACS)

## Product Details

Immunogen:	Mouse KLRK1
Clone:	CX5
Isotype:	IgG1 kappa
Purification:	Affinity purified

## Target Details

Target:	KLRK1
Alternative Name:	KLRK1 / CD314 / NKG2D ( <a href="#">KLRK1 Products</a> )
Background:	Name/Gene ID: KLRK1  Synonyms: KLRK1, D12S2489E, CD314 antigen, KLR, NK cell receptor D, NKG2D, NKG2-D, NKG2-D-activating NK receptor, CD314

## Target Details

Gene ID:	22914
UniProt:	<a href="#">P26718</a>
Pathways:	<a href="#">Activation of Innate immune Response</a> , <a href="#">Cellular Response to Molecule of Bacterial Origin</a> , <a href="#">Regulation of Leukocyte Mediated Immunity</a> , <a href="#">Positive Regulation of Immune Effector Process</a>

## Application Details

Application Notes:	Approved: Flo  Usage: The CX5 antibody has been tested by flow cytometric analysis of mouse splenocyte suspensions. This can be used at less than or equal to 0.25 µg per test. A test is defined as the amount (ug) of antibody that will stain a cell sample in a final volume of 100 µL. Cell number should be determined empirically but can range from 10 <sup>5</sup> to 10 <sup>8</sup> cells/test. It is recommended that when using this antibody for staining the secondary must be Biotin anti-rat. Other secondaries may give suboptimal staining. It is recommended that the antibody be carefully titrated for optimal performance in the assay of interest.
Comment:	Target Species of Antibody: Mouse
Restrictions:	For Research Use only

## Handling

Format:	Liquid
Concentration:	Lot specific
Buffer:	Aqueous buffer, no sodium azide
Preservative:	Azide free
Handling Advice:	avoid freezing and store undiluted.
Storage:	4 °C
Storage Comment:	Store at 4°C, avoid freeze-thaw cycles.

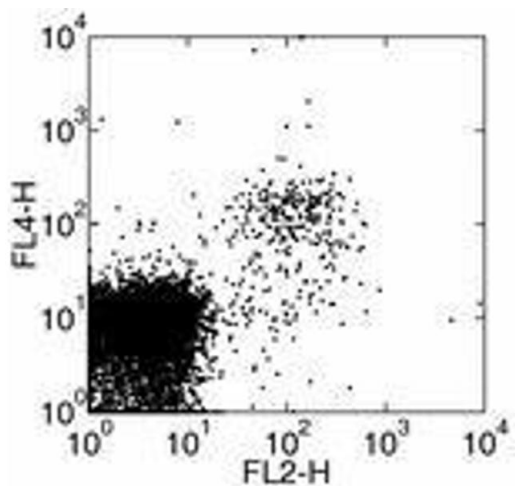


Image 1.