

Datasheet for ABIN476276  
**anti-LYVE1 antibody (Biotin)**



[Go to Product page](#)

1 Image

## Overview

Quantity:	100 µg
Target:	LYVE1
Reactivity:	Mouse
Host:	Rat
Clonality:	Monoclonal
Conjugate:	This LYVE1 antibody is conjugated to Biotin
Application:	Flow Cytometry (FACS)

## Product Details

Immunogen:	Mouse LYVE1
Clone:	ALY7
Isotype:	IgG1
Purification:	Affinity purified

## Target Details

Target:	LYVE1
Alternative Name:	LYVE1 / LYVE-1 ( <a href="#">LYVE1 Products</a> )
Background:	Name/Gene ID: LYVE1
	Synonyms: LYVE1, CRSBP-1, CRSBP1, Hyaluronic acid receptor, LYVE-1, XLKD1, HAR

### Target Details

Gene ID:	10894
Pathways:	<a href="#">Glycosaminoglycan Metabolic Process</a>

### Application Details

Application Notes:	Approved: Flo  Usage: This ALY7 antibody has been tested by flow cytometric analysis of LYVE-1/GFP co-transfected cells. This can be used at less than or equal to 0.125 µg per test. A test is defined as the amount (ug) of antibody that will stain a cell sample in a final volume of 100 µL. Cell number should be determined empirically but can range from 10^5 to 10^8 cells/test. It is recommended that the antibody be carefully titrated for optimal performance in the assay of interest. The applications listed have been tested for the unconjugated form of this product. Other forms have not been tested.
Comment:	Target Species of Antibody: Mouse
Restrictions:	For Research Use only

### Handling

Format:	Liquid
Concentration:	Lot specific
Buffer:	Aqueous buffer, 0.09 % sodium azide, contains stabilizer if necessary
Preservative:	Sodium azide
Precaution of Use:	This product contains Sodium azide: a POISONOUS AND HAZARDOUS SUBSTANCE which should be handled by trained staff only.
Handling Advice:	Do not freeze.
Storage:	4 °C
Storage Comment:	Store at 4°C. Do not freeze.

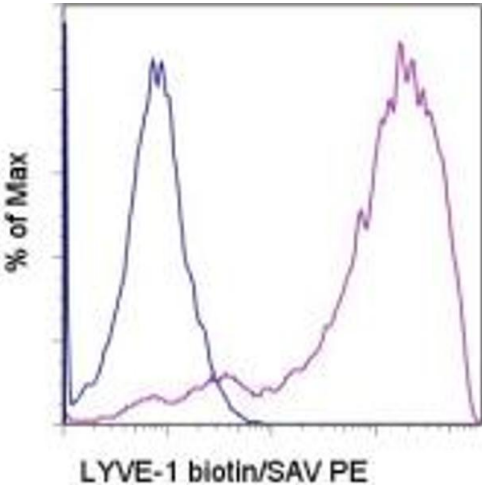


Image 1.