

Datasheet for ABIN476564
anti-PDCD1LG2 antibody



[Go to Product page](#)

1 Image

Overview

Quantity:	100 µg
Target:	PDCD1LG2
Reactivity:	Mouse
Host:	Rat
Clonality:	Monoclonal
Conjugate:	This PDCD1LG2 antibody is un-conjugated
Application:	Western Blotting (WB), Flow Cytometry (FACS), Immunohistochemistry (IHC), Immunoprecipitation (IP), Immunohistochemistry (Frozen Sections) (IHC (fro))

Product Details

Immunogen:	Mouse PDCD1LG2
Clone:	TY25
Isotype:	IgG2a kappa
Purification:	Affinity purified

Target Details

Target:	PDCD1LG2
Alternative Name:	PDCD1LG2 / CD273 / PD-L2 (PDCD1LG2 Products)
Background:	Name/Gene ID: PDCD1LG2

Synonyms: PDCD1LG2, B7 dendritic cell molecule, B7-DC, B7DC, BA574F11.2, CD273, Btdc,

Target Details

	CD273 antigen, PD-L2, PDCD1 ligand 2, PD-1-ligand 2, Programmed death ligand 2, Butyrophilin B7-DC, PD-1 ligand 2, PDCD1L2, PDL2
Gene ID:	80380
UniProt:	Q9BQ51

Application Details

Application Notes:	Approved: Flo, IHC, IHC-Fr, IP, WB Usage: The TY25 antibody has been tested by flow cytometric analysis of mouse splenocyte suspensions and B7-DC transfected cells. This can be used at less than or equal to 0.5 µg per test. A test is defined as the amount (ug) of antibody that will stain a cell sample in a final volume of 100 µL. Cell number should be determined empirically but can range from 10 ⁵ to 10 ⁸ cells/test. It is recommended that the antibody be carefully titrated for optimal performance in the assay of interest.
Comment:	Target Species of Antibody: Mouse
Restrictions:	For Research Use only

Handling

Format:	Liquid
Concentration:	Lot specific
Buffer:	PBS, pH 7.2, 150 mM sodium chloride, 0.09 % sodium azide
Preservative:	Sodium azide
Precaution of Use:	This product contains Sodium azide: a POISONOUS AND HAZARDOUS SUBSTANCE which should be handled by trained staff only.
Handling Advice:	avoid freezing and store undiluted.
Storage:	4 °C
Storage Comment:	Store at 4°C, avoid freeze-thaw cycles.

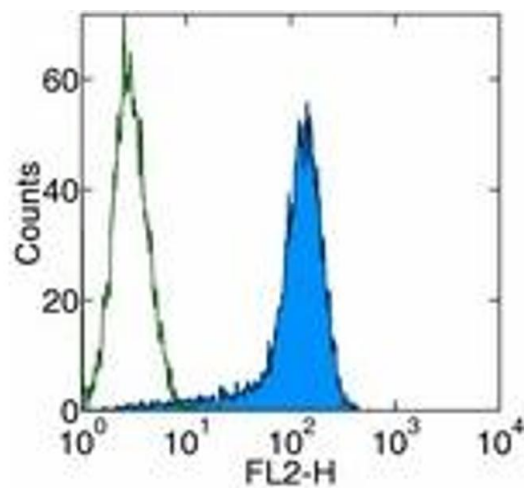


Image 1.