



Datasheet for ABIN476759
anti-CD45.1 antibody (Cy7,PE)



[Go to Product page](#)

2 Images

Overview

Quantity:	100 µg
Target:	CD45.1
Reactivity:	Mouse
Host:	Mouse
Clonality:	Monoclonal
Conjugate:	This CD45.1 antibody is conjugated to Cy7,PE
Application:	Flow Cytometry (FACS)

Product Details

Immunogen:	Mouse CD45.1
Clone:	A20
Isotype:	IgG2a kappa
Purification:	Affinity purified

Target Details

Target:	CD45.1
Alternative Name:	CD45.1 (CD45.1 Products)

Application Details

Application Notes:	Approved: Flo
--------------------	---------------

Application Details

Usage: The A20 antibody has been tested by flow cytometric analysis of mouse splenocyte suspensions. This can be used at less than or equal to 0.5 µg per test. A test is defined as the amount (ug) of antibody that will stain a cell sample in a final volume of 100 µL. Cell number should be determined empirically but can range from 10⁵ to 10⁸ cells/test. It is recommended that the antibody be carefully titrated for optimal performance in the assay of interest. The applications listed have been tested for the unconjugated form of this product. Other forms have not been tested.

Comment: Target Species of Antibody: Mouse

Restrictions: For Research Use only

Handling

Format: Liquid

Concentration: Lot specific

Buffer: PBS, pH 7.2, <=0.09 % sodium azide, protein stabilizer

Preservative: Sodium azide

Precaution of Use: This product contains Sodium azide: a POISONOUS AND HAZARDOUS SUBSTANCE which should be handled by trained staff only.

Handling Advice: Do not freeze. Product is photosensitive and should be protected from light.

Storage: 4 °C

Storage Comment: Store at 4°C. Do not freeze. Protect from light.

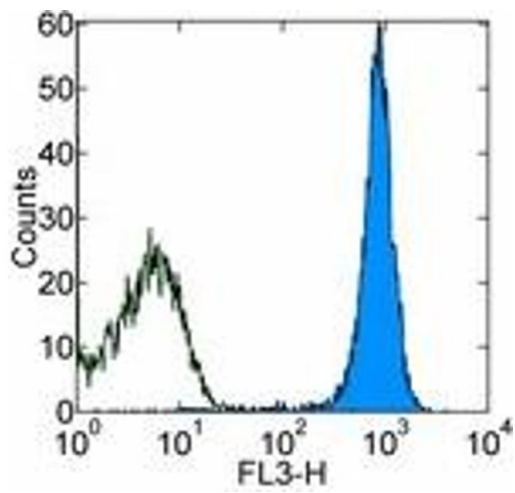


Image 1.

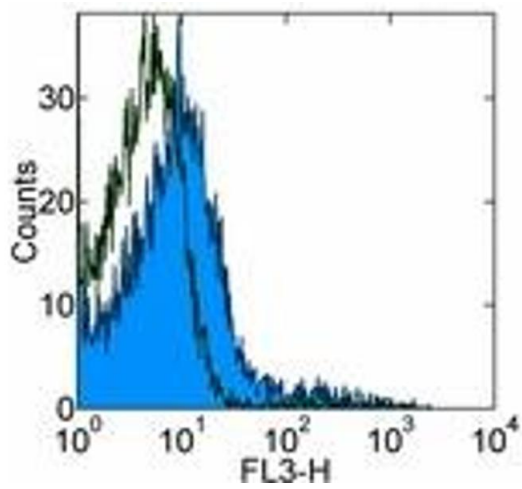


Image 2.