

Datasheet for ABIN478085
anti-GLB1 antibody (N-Term)



[Go to Product page](#)

1 Image

Overview

Quantity:	0.1 mg
Target:	GLB1
Binding Specificity:	N-Term
Reactivity:	E. coli
Host:	Chicken
Clonality:	Polyclonal
Conjugate:	This GLB1 antibody is un-conjugated
Application:	Western Blotting (WB), ELISA

Product Details

Isotype:	IgY
Purification:	Immunoaffinity purified

Target Details

Target:	GLB1
Alternative Name:	beta Galactosidase (GLB1 Products)
Pathways:	Glycosaminoglycan Metabolic Process

Application Details

Application Notes:	Approved: ELISA, WB (1 - 2 µg/mL)
--------------------	-----------------------------------

Application Details

	Usage: Beta-gal antibody can be used for detection of beta-gal by Western blot at 1-2 µg/mL.
Comment:	Target Species of Antibody: E. coli
Restrictions:	For Research Use only

Handling

Format:	Liquid
Concentration:	Lot specific
Buffer:	PBS, 0.02 % sodium azide
Preservative:	Sodium azide
Precaution of Use:	This product contains Sodium azide: a POISONOUS AND HAZARDOUS SUBSTANCE which should be handled by trained staff only.
Handling Advice:	avoid freeze thaw cycles. Store undiluted.
Storage:	4 °C,-20 °C
Storage Comment:	Store at 4°C for 3 months and -20°C, stable for up to 1 year. Avoid repeated freeze-thaw cycles.
Expiry Date:	12 months

Images

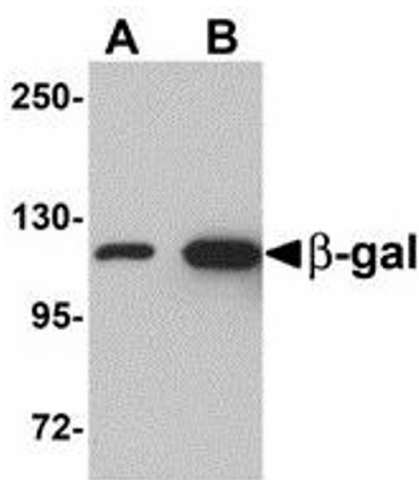


Image 1.