



Datasheet for ABIN478151
anti-KDM3A antibody (N-Term)



[Go to Product page](#)

1 Image

Overview

Quantity:	0.1 mg
Target:	KDM3A
Binding Specificity:	N-Term
Reactivity:	Human, Mouse, Rat
Host:	Rabbit
Clonality:	Polyclonal
Conjugate:	This KDM3A antibody is un-conjugated
Application:	Western Blotting (WB), ELISA, Immunohistochemistry (IHC)

Product Details

Isotype:	IgG
Specificity:	This antibody will not cross-react with JMJD1B or JMJD1C.
Purification:	Immunoaffinity purified

Target Details

Target:	KDM3A
Alternative Name:	KDM3A / JMJD1A (KDM3A Products)
Background:	Name/Gene ID: KDM3A Synonyms: KDM3A, JHDM2A, JMJD1A, Jumonji domain containing 1A, JHMD2A, JMJD1, KIAA0742, Jumonji domain containing 1, Testis-specific protein A, Lysine-specific demethylase

Target Details

	3A, TSGA
Gene ID:	55818
UniProt:	Q9Y4C1
Pathways:	Intracellular Steroid Hormone Receptor Signaling Pathway , Nuclear Hormone Receptor Binding , Warburg Effect

Application Details

Application Notes:	Approved: ELISA, IHC, WB (1 - 2 µg/mL) Usage: JMJD1A antibody can be used for detection of JMJD1A by Western blot at 1-2 µg/mL. Not recommended for: IHC-P
Comment:	Target Species of Antibody: Human
Restrictions:	For Research Use only

Handling

Format:	Liquid
Concentration:	Lot specific
Buffer:	PBS, 0.02 % sodium azide
Preservative:	Sodium azide
Precaution of Use:	This product contains Sodium azide: a POISONOUS AND HAZARDOUS SUBSTANCE which should be handled by trained staff only.
Handling Advice:	avoid freeze thaw cycles. Store undiluted.
Storage:	4 °C, -20 °C
Storage Comment:	Store at 4°C for 3 months and -20°C, stable for up to 1 year. Avoid repeated freeze-thaw cycles.
Expiry Date:	12 months

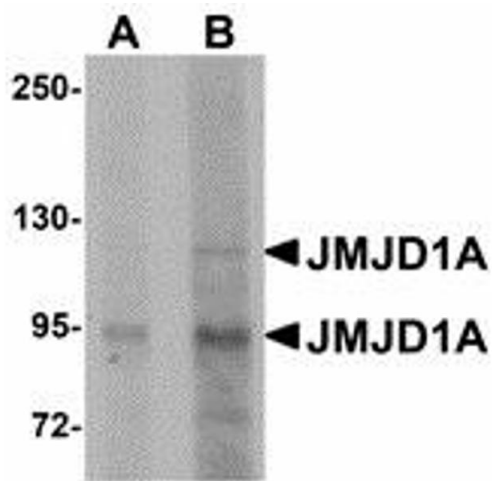


Image 1.