



[Go to Product page](#)

Datasheet for ABIN487356

anti-KCTD15 antibody (N-Term)

4 Images

Overview

| | |
|----------------------|--|
| Quantity: | 0.1 mL |
| Target: | KCTD15 |
| Binding Specificity: | AA 1-234, N-Term |
| Reactivity: | Human |
| Host: | Mouse |
| Clonality: | Monoclonal |
| Conjugate: | This KCTD15 antibody is un-conjugated |
| Application: | Western Blotting (WB), Immunofluorescence (IF), Enzyme Immunoassay (EIA) |

Product Details

| | |
|------------------|---|
| Immunogen: | Recombinant human KCTD15 (1-234aa) purified from E. coli |
| Clone: | AT4C3 |
| Isotype: | IgG3 |
| Specificity: | The antibody recognizes human KCTD15. Other species not tested. |
| Characteristics: | Synonyms: KCTD15, KCTD-15, BTB/POZ domain-containing protein KCTD15 |
| Purification: | Protein-G affinity chromatography |

Target Details

| | |
|-------------------|--|
| Target: | KCTD15 |
| Alternative Name: | KCTD15 (KCTD15 Products) |

Target Details

Background: KCTD15 (Potassium channel tetramerisation domain containing 15, also known as BTB/POZ domain-containing protein KCTD15) is protein that in humans is encoded by the KCTD15 gene. KCTD15 is expressed at high level in brain and hypothalamus. The potassium channel KCTD15 was identified as a genetic loci associated with higher than normal body mass index (BMI) in humans along with genes such as GNPDA2, MTCH2, FTO, and TMEM18. Single nucleotide polymorphisms (SNPs) in non-diabetic and diabetic patients showed that FTO was most strongly associated with obesity while MTCH2 and GNPDA2 were still significantly associated with higher than normal BMI levels. Synonyms: BTB/POZ domain-containing protein KCTD15, KCTD-15, KCTD15

Gene ID: 79047

UniProt: [Q96S11](#)

Application Details

Application Notes: ELISA. Western blot (1: 250 - 1: 1000). Immunofluorescence (1: 250 - 1: 500).
Other applications not tested.
Optimal dilutions are dependent on conditions and should be determined by the user.

Restrictions: For Research Use only

Handling

Format: Liquid

Concentration: 1.0 mg/mL

Buffer: PBS, pH 7.4, containing 0.09 % sodium azide

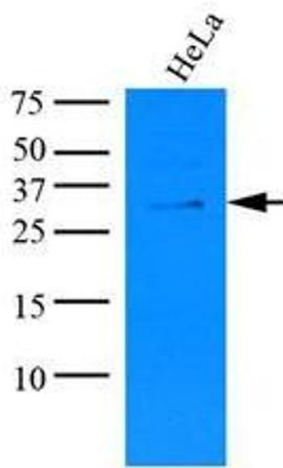
Preservative: Sodium azide

Precaution of Use: This product contains sodium azide: a POISONOUS AND HAZARDOUS SUBSTANCE which should be handled by trained staff only.

Storage: 4 °C/-20 °C

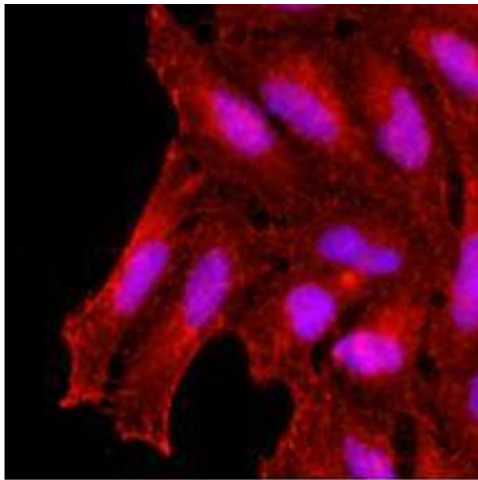
Storage Comment: Store the antibody undiluted at 2-8 °C for up to two weeks or (in aliquots) at -20 °C or -70 °C for longer. Avoid repeated freezing and thawing.
Shelf life: one year from despatch.

Expiry Date: 12 months



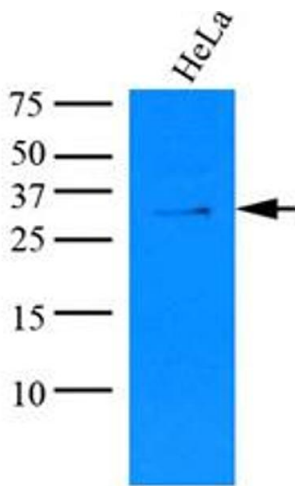
Western Blotting

Image 1.



Immunofluorescence

Image 2.



Western Blotting

Image 3.

Please check the [product details page](#) for more images. Overall 4 images are available for ABIN487356.