

Datasheet for ABIN487412  
**anti-AMY2A antibody (N-Term)**

## 2 Images

[Go to Product page](#)

## Overview

Quantity:	0.1 mg
Target:	AMY2A
Binding Specificity:	AA 1-492, N-Term
Reactivity:	Rat
Host:	Mouse
Clonality:	Monoclonal
Conjugate:	This AMY2A antibody is un-conjugated
Application:	Western Blotting (WB), Enzyme Immunoassay (EIA)

## Product Details

Immunogen:	Recombinant protein (1-492 amino acids of the CDS) expressed in E. coli.
Clone:	RPA-B5
Isotype:	IgG1
Specificity:	Specifically recognizes Rat Pancreatic Amylase.
Cross-Reactivity (Details):	Species reactivity (tested):Rat.
Characteristics:	Synonyms: AMY2A, Pancreatic alpha-amylase, 1, 4-alpha-D-glucan glucanohydrolase 2A
Purification:	Affinity Chromatography.

## Target Details

Target:	AMY2A
---------	-------

## Target Details

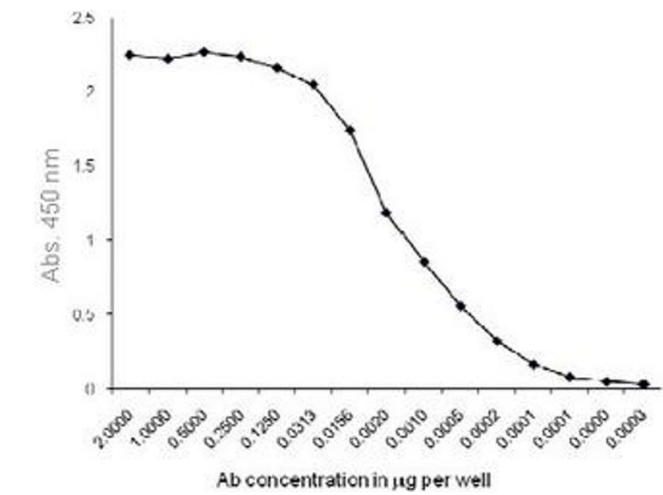
Abstract:	<a href="#">AMY2A Products</a>
Background:	Pancreatic Amylase is a digestive enzyme secreted by pancreas into the intestine. It consists of a single polypeptide chain with a molecular weight of 54 kDa. Measurement of Amylase concentrations in serum is a diagnostic test for various pancreatic disorders.Synonyms: 1, 4-alpha-D-glucan glucanohydrolase 2A, AMY2A, Pancreatic alpha-amylase
Gene ID:	497039
UniProt:	<a href="#">P00689</a>

## Application Details

Application Notes:	Indirect ELISA (1-2 µg/mL): Detect up to 20 ng of coated antigen. Western blotting (approx. 4 µg/mL): Detects Rat Pancreatic Amylase at the expected MolecularWeight at approx. 54 kDa. Other applications not tested. Optimal dilutions are dependent on conditions and should be determined by the user.
Restrictions:	For Research Use only

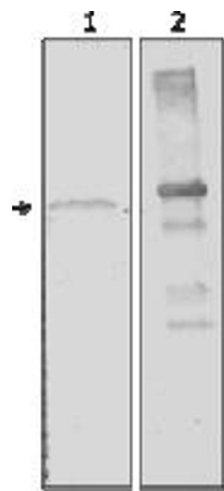
## Handling

Concentration:	0.5 mg/mL
Buffer:	Phosphate-buffered saline (PBS) containing 30 % Glycerol, 0.5 % BSA and and 0.01 % Thimerosal.
Preservative:	Thimerosal (Merthiolate)
Precaution of Use:	This product contains thimerosal (merthiolate): a POISONOUS AND HAZARDOUS SUBSTANCE which should be handled by trained staff only.
Storage:	-20 °C
Storage Comment:	Store the antibody (in aliquots) at -20 °CAvoid repeated freezing and thawing. Shelf life: one year from despatch.
Expiry Date:	12 months



Flow Cytometry

Image 1.



Western Blotting

Image 2.