



[Go to Product page](#)

Datasheet for ABIN487413
anti-C-Peptide antibody

2 Images

Overview

Quantity:	0.1 mg
Target:	C-Peptide
Reactivity:	Human
Host:	Mouse
Clonality:	Monoclonal
Conjugate:	This C-Peptide antibody is un-conjugated
Application:	Immunohistochemistry (Frozen Sections) (IHC (fro)), Enzyme Immunoassay (EIA)

Product Details

Immunogen:	Full length synthetic Human C-Peptide.
Clone:	HCP-B2
Isotype:	IgG1
Characteristics:	Synonyms: INS
Purification:	Affinity Chromatography on Protein G

Target Details

Target:	C-Peptide
Abstract:	C-Peptide Products
Background:	C Peptide is part of the molecule of Proinsulin, the insulin precursor molecule, that consists of three parts: C Peptide and two long strands of amino acids (called the alpha and beta chains)

Target Details

that later become linked together to form the insulin molecule. From every molecule of proinsulin, one molecule of insulin plus one molecule of C Peptide are produced. C peptide is released into the blood stream in equal amounts to insulin. A test of C peptide levels will show how much insulin the body is making. The ratio of C-peptide and Proinsulin in human serum is also very important in diagnosis and prognosis of various diseases like Polycystic Ovary Syndrome, Ovarian carcinoma, etc.

Application Details

Application Notes: Indirect ELISA: Use at 1-2 µg/mL (For detection of antigen). Immunohistochemistry: Use at 20-40 µg/mL.
Other applications not tested.
Optimal dilutions are dependent on conditions and should be determined by the user.

Restrictions: For Research Use only

Handling

Concentration: 0.5 mg/mL

Buffer: PBS containing containing 30 % Glycerol, 0.5 % BSA and 0.01 % Thimerosal

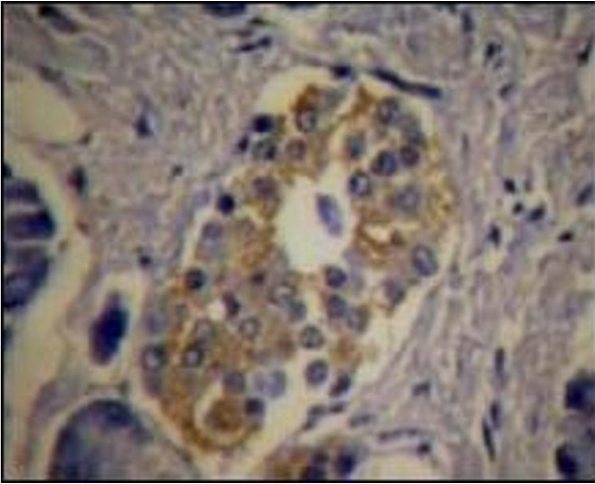
Preservative: Thimerosal (Merthiolate)

Precaution of Use: This product contains thimerosal (merthiolate): a POISONOUS AND HAZARDOUS SUBSTANCE which should be handled by trained staff only.

Storage: -20 °C

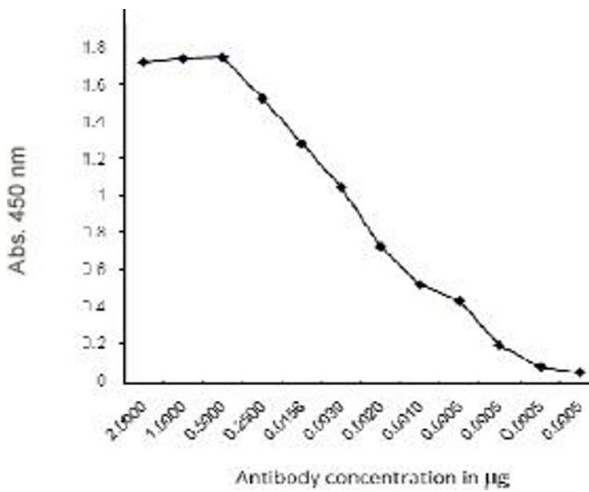
Storage Comment: Store the antibody (in aliquots) at -20 °C Avoid repeated freezing and thawing.
Shelf life: one year from despatch.

Expiry Date: 12 months



Immunohistochemistry

Image 1.



ELISA

Image 2.