

Datasheet for ABIN488082

anti-Kallikrein 7 antibody (N-Term)



[Go to Product page](#)

2 Images

Overview

| | |
|----------------------|--|
| Quantity: | 0.1 mL |
| Target: | Kallikrein 7 (KLK7) |
| Binding Specificity: | AA 1-237, N-Term |
| Reactivity: | Human |
| Host: | Rabbit |
| Clonality: | Polyclonal |
| Conjugate: | This Kallikrein 7 antibody is un-conjugated |
| Application: | Western Blotting (WB), Immunohistochemistry (Paraffin-embedded Sections) (IHC (p)) |

Product Details

| | |
|-----------------------------|--|
| Immunogen: | Recombinant protein fragment contain a sequence corresponding to a region within amino acids 1 and 237 of Human KLK7 |
| Specificity: | Recognizes Kallikrein-7/KLK7.r />Cellular Localization: Secreted. |
| Cross-Reactivity (Details): | Species reactivity (tested):Human. |
| Purification: | Antigen-Affinity Chromatography. |

Target Details

| | |
|-------------------|--|
| Target: | Kallikrein 7 (KLK7) |
| Alternative Name: | KLK7 / Kallikrein-7 (KLK7 Products) |
| Background: | Kallikreins are a subgroup of serine proteases having diverse physiological functions. Growing |

Target Details

evidence suggests that many kallikreins are implicated in carcinogenesis and some have potential as novel cancer and other disease biomarkers. This gene is one of the fifteen kallikrein subfamily members located in a cluster on chromosome 19. Its encoded enzyme is thought to be involved in the proteolysis of intercellular cohesive structures preceding desquamation, which is the shedding of the outermost layer of the epidermis. Alternative splicing of this gene results in two transcript variants encoding the same protein. Synonyms: PRSS6, SCCE, Serine protease 6, Stratum corneum chymotryptic enzyme, hK7

Gene ID: 5650, 9606

UniProt: [P49862](#)

Pathways: [Complement System](#)

Application Details

Application Notes: Western blotting: 1/500-1/3000. Positive Controls: 293T Immunohistochemistry on Formalin-Fixed Paraffin-Embedded Sections.
Other applications not tested.
Optimal dilutions are dependent on conditions and should be determined by the user.

Restrictions: For Research Use only

Handling

Format: Liquid

Concentration: 0.7 mg/mL

Buffer: 0.1 M Tris, 0.1 M Glycine, 10 % Glycerol (pH 7), 0.01 % Thimerosal

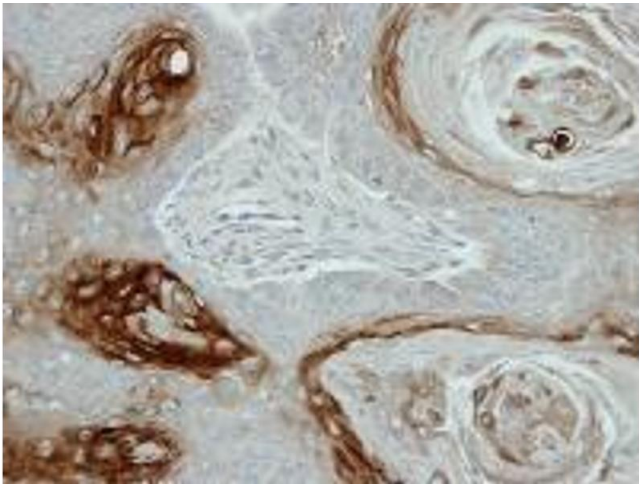
Preservative: Thimerosal (Merthiolate)

Precaution of Use: This product contains thimerosal (merthiolate): a POISONOUS AND HAZARDOUS SUBSTANCE which should be handled by trained staff only.

Handling Advice: Avoid repeated freezing and thawing.

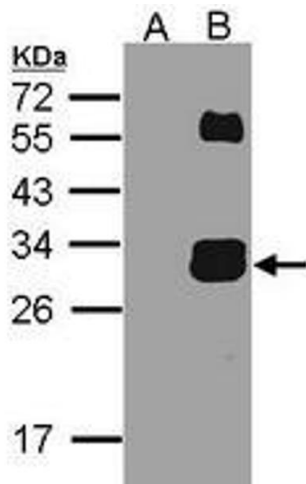
Storage: -20 °C

Storage Comment: Store the antibody undiluted at (in aliquots) at -20 °C.



Immunohistochemistry (Paraffin-embedded Sections)

Image 1. Figure 1. Kallikrein-7/KLK7 antibody staining of Human Paraffin-Embedded Cal27 xenograft at 1/100 dilution.



Western Blotting

Image 2. Figure 2. Western Blot analysis of KLK7 expression in transfected 293T cell line by KLK7 antibody (at 1/500 dilution). A: Non-transfected lysate. B: KLK7 transfected lysate. 12% SDS PAGE