

Datasheet for ABIN488111

anti-Glutaredoxin 2 antibody (C-Term)**3** Images[Go to Product page](#)

Overview

Quantity:	0.4 mL
Target:	Glutaredoxin 2 (GRX2)
Binding Specificity:	AA 126-155, C-Term
Reactivity:	Human, Mouse
Host:	Rabbit
Clonality:	Polyclonal
Conjugate:	This Glutaredoxin 2 antibody is un-conjugated
Application:	Western Blotting (WB), Flow Cytometry (FACS), Immunohistochemistry (Paraffin-embedded Sections) (IHC (p)), Enzyme Immunoassay (EIA)

Product Details

Immunogen:	GLRX2 antibody is generated from Rabbits immunized with a KLH conjugated synthetic peptide between 126~155 amino acids from the C-terminal region of Human GLRX2. Genename: GLRX2
Isotype:	Ig Fraction
Specificity:	Recognizes Glutaredoxin-2 (C-term, 126-155)
Cross-Reactivity (Details):	Species reactivity (tested): Human and Mouse.
Purification:	Saturated Ammonium Sulfate (SAS) precipitation followed by dialysis against PBS.

Target Details

Target:	Glutaredoxin 2 (GRX2)
---------	-----------------------

Target Details

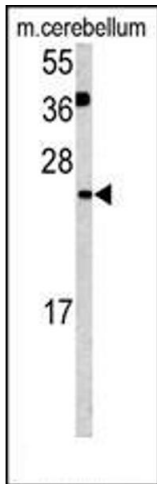
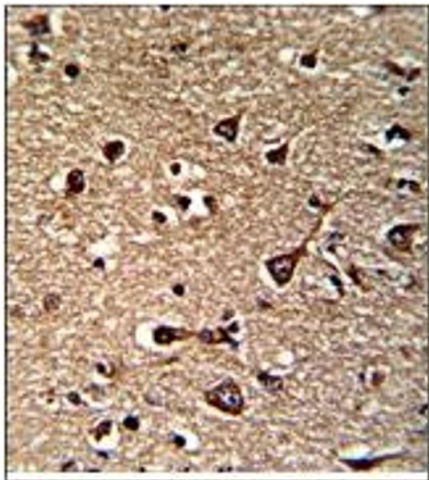
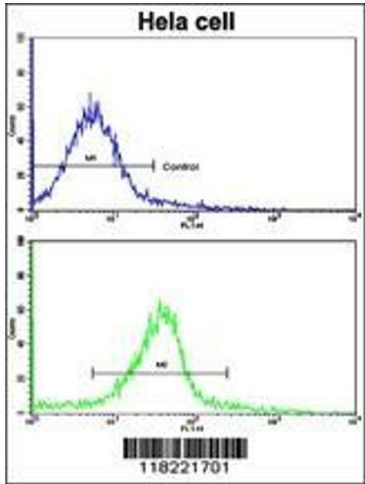
Alternative Name:	Glutaredoxin-2 / GLRX2 (GRX2 Products)
Background:	GLRX2 are a family of glutathione-dependent hydrogen donors that participate in a variety of cellular redox reactions.Synonyms: GRX2, Glutaredoxin-2 mitochondrial, grxB
Gene ID:	51022
NCBI Accession:	NP_057150
UniProt:	Q9NS18
Pathways:	Cell RedoxHomeostasis

Application Details

Application Notes:	ELISA: 1/1,000. Western blotting: 1/50approx. 1/100. Flow Cytometry: 1/10approx. 1/50. Immunohistochemistry: 1/50approx. 1/100. Other applications not tested. Optimal dilutions are dependent on conditions and should be determined by the user.
Restrictions:	For Research Use only

Handling

Format:	Liquid
Concentration:	0.25 mg/mL
Buffer:	PBS containing 0.09 % (W/V) Sodium Azide as preservative.
Preservative:	Sodium azide
Precaution of Use:	This product contains sodium azide: a POISONOUS AND HAZARDOUS SUBSTANCE which should be handled by trained staff only.
Handling Advice:	Avoid repeated freezing and thawing.
Storage:	4 °C/-20 °C
Storage Comment:	Store the antibody undiluted at 2-8 °C for one month or (in aliquots) at -20 °C for longer.



Flow Cytometry

Image 1. Figure 3. Glutaredoxin-2 Antibody staining of Hela cells by Flow Cytometry (Bottom Histogram) compared to a Negative Control cell (Top Histogram). FITC-conjugated Goat-anti-Rabbit secondary antibodies were used for the analysis.

Immunohistochemistry (Paraffin-embedded Sections)

Image 2. Figure 2. Glutaredoxin-2 Antibody staining of Formalin-Fixed and Paraffin-Embedded Human brain. This antibody was peroxidase-conjugated to the secondary antibody, followed by DAB staining. *This data demonstrates the use of this antibody for immunohistochemistry. Clinical relevance has not been evaluated.*

Western Blotting

Image 3. Figure 1. Glutaredoxin-2 antibody staining of Mouse Cerebellum tissue lysates (35 µg/lane). GLRX2 (arrow) was detected using the purified Pab.