

Datasheet for ABIN4884490

**SERPIND1 ELISA Kit****1** Image[Go to Product page](#)

## Overview

Quantity:	96 tests
Target:	SERPIND1
Reactivity:	Human
Method Type:	Sandwich ELISA
Detection Range:	1.23-300 ng/mL
Minimum Detection Limit:	1.23 ng/mL
Application:	ELISA

## Product Details

Purpose:	Human SERPIND1 (Heparin Cofactor II) ELISA Kit for serum, plasma, and cell culture supernatant samples.
Sample Type:	Plasma, Cell Culture Supernatant, Serum
Analytical Method:	Quantitative
Detection Method:	Colorimetric
Specificity:	This ELISA antibody pair detects human Serpin D1. Other species not determined.
Characteristics:	<ul style="list-style-type: none"><li>• Strip plates and additional reagents allow for use in multiple experiments</li><li>• Quantitative protein detection</li><li>• Establishes normal range</li><li>• The best products for confirmation of antibody array data</li></ul>
Components:	<ul style="list-style-type: none"><li>• Pre-Coated 96-well Strip Microplate</li><li>• Wash Buffer</li></ul>

## Product Details

- Stop Solution
- Assay Diluent(s)
- Lyophilized Standard
- Biotinylated Detection Antibody
- Streptavidin-Conjugated HRP
- TMB One-Step Substrate

### Material not included:

- Distilled or deionized water
- Precision pipettes to deliver 2 µL to 1 µL volumes
- Adjustable 1-25 µL pipettes for reagent preparation
- 100 µL and 1 liter graduated cylinders
- Tubes to prepare standard and sample dilutions
- Absorbent paper
- Microplate reader capable of measuring absorbance at 450nm
- Log-log graph paper or computer and software for ELISA data analysis

## Target Details

Target: SERPIND1

Alternative Name: SERPIND1///Heparin Cofactor II ([SERPIND1 Products](#))

Gene ID: 3053

UniProt: [P05546](#)

## Application Details

Application Notes: Recommended Dilution for serum and plasma samples 20,000 fold

Sample Volume: 100 µL

Plate: Pre-coated

Protocol:

1. Prepare all reagents, samples and standards as instructed in the manual.
2. Add 100 µL of standard or sample to each well.
3. Incubate 2.5 h at RT or O/N at 4 °C.
4. Add 100 µL of prepared biotin antibody to each well.
5. Incubate 1 h at RT.
6. Add 100 µL of prepared Streptavidin solution to each well.
7. Incubate 45 min at RT.
8. Add 100 µL of TMB One-Step Substrate Reagent to each well.
9. Incubate 30 min at RT.
10. Add 50 µL of Stop Solution to each well.
11. Read at 450 nm immediately.

Application Details

Restrictions: For Research Use only

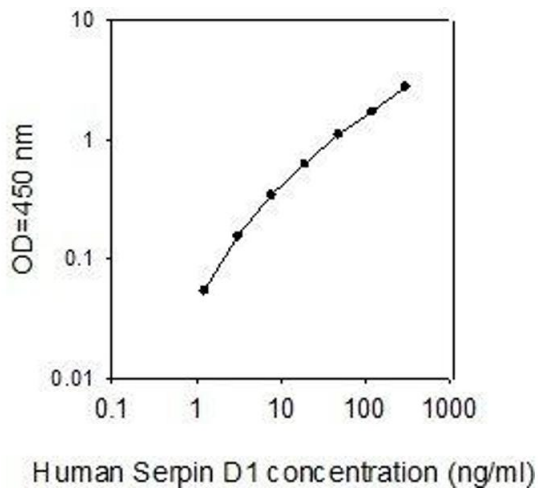
Handling

Storage: -20 °C

Storage Comment: The entire kit may be stored at -20°C for up to 1 year from the date of shipment. Avoid repeated freeze-thaw cycles. The kit may be stored at 4°C for up to 6 months. For extended storage, it is recommended to store at -80°C.

Expiry Date: 6 months

Images



**ELISA**

**Image 1.**