

Datasheet for ABIN488514

anti-Toc75 antibody[Go to Product page](#)**1** Image

Overview

Quantity:	200 µL
Target:	Toc75
Reactivity:	Pisum sativum, Synechococcus sp., Thermosynechococcus, Synechocystis
Host:	Rabbit
Clonality:	Polyclonal
Conjugate:	This Toc75 antibody is un-conjugated
Application:	Flow Cytometry (FACS), Immunolocalization (IL), Western Blotting (WB)

Product Details

Immunogen:	psTOC75, Predicted POTRA Domain #1, Amino acids, 158-241, Expressed and purified in E. coli using the Impact System from NEB. Peptide confirmed by MALDI. Q43715
Cross-Reactivity (Details):	Not reactive in: no confirmed exceptions from predicted reactivity known in the moment
Predicted Reactivity:	Ricinus communis, Vitis vinifera, Populus trichocarpa
Characteristics:	Expected / apparent Molecular Weight of the Antigene: 88 / 75 kDa (occasionally a processing intermediate at 78 kDa is observed)
Purification:	serum

Target Details

Target:	Toc75
Abstract:	Toc75 Products

Target Details

Background:	OEP 75 or Toc75, Chloroplast outer envelope membrane protein from Pisum sativum (pea), Predicted to contain 3 POTRA domains at N-terminus. Believed to be the protein conducting channel of the Toc translocon and assembles as an 18 stranded β -barrel (EMBO J. (1995) 14:11, 2436-2446), In Arabidopsis there are five members of this Family Toc75 (I-V), atToc75III is most closely related to psToc75. Additionally, it is structurally related to members of the bacterial surface antigen super-family including: OMA87, Outer membrane protein/protective antigen, (COG4775, COG4775) [Cell envelope biogenesis, outer membrane, YaeT, outer membrane protein assembly complex, (TIGR03303), FhaC, Hemolysin activation/secretion protein (COG2831) [Intracellular trafficking and secretion]
Molecular Weight:	expected: 88 kDa, apparent: 75 kDa (occasionally a processing intermediate at 78 kDa is observed)
Gene ID:	158241
UniProt:	Q43715

Application Details

Application Notes:	1: 2000 - 1: 25 000, 1: 100 000 (WB), 1: 500 (FACS). 1: 100 (IL)
Comment:	antibody detects Toc75 POTRA domain 1 as purified protein, in chloroplast fraction and in crude envelope fraction
Restrictions:	For Research Use only

Handling

Format:	Lyophilized
Reconstitution:	For reconstitution add 200 μ L of sterile water
Handling Advice:	Please, remember to spin tubes briefly prior to opening them to avoid any losses that might occur from lyophilized material adhering to the cap or sides of the tubes. Once reconstituted make aliquots to avoid repeated freeze-thaw cycles.
Storage:	-20 °C
Storage Comment:	store lyophilized/reconstituted at -20°C, once reconstituted make aliquots to avoid repeated freeze-thaw cycles. Please, remember to spin tubes briefly prior to opening them to avoid any losses that might occur from lyophilized material adhering to the cap or sides of the tubes.

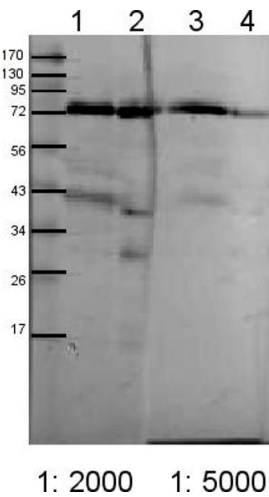


Image 1.