

Datasheet for ABIN4886273

ATF2 ELISA Kit**2** Images[Go to Product page](#)

Overview

| | |
|----------------------|-------------------|
| Quantity: | 96 tests |
| Target: | ATF2 |
| Binding Specificity: | pSer386 |
| Reactivity: | Human, Rat, Mouse |
| Method Type: | Sandwich ELISA |
| Application: | ELISA |

Product Details

| | |
|--------------------|---|
| Purpose: | Human, Mouse and Rat Phospho-RSK2 (Ser386) ELISA Kit. This assay semi-quantitatively measures phosphorylated RSK2 (Ser386) in lysate samples. |
| Sample Type: | Cell Culture Lysate |
| Analytical Method: | Semi-Quantitative |
| Detection Method: | Colorimetric |
| Specificity: | This ELISA kit recognizes Human, Mouse and Rat ATF2 phosphorylated at site Serine-386. |
| Characteristics: | <ul style="list-style-type: none">• Rapidly measure phosphorylated protein in lysates• Screen numerous different cell lysates without performing a Western Blot analysis• Minimal hands-on time, convenient, and non-radioactive material |
| Components: | <ul style="list-style-type: none">• Pre-Coated 96-well Strip Microplate• Wash Buffer• Anti-Phospho Antibody• HRP-Conjugated Secondary Antibody |

Product Details

- Assay Diluent
- TMB One-Step Substrate
- Stop Solution
- Lysis Buffer
- Positive Control Sample

| | |
|------------------------|--|
| Material not included: | <ul style="list-style-type: none">• Distilled or deionized water• 100 mL and 1 liter graduated cylinders• Tubes to prepare sample dilutions• Protease and Phosphatase inhibitors• Precision pipettes to deliver 2 µL to 1 mL volumes• Adjustable 1-25 mL pipettes for reagent preparation• Benchtop rocker or shaker• Microplate reader capable of measuring absorbance at 450 nm |
|------------------------|--|

Target Details

| | |
|-------------------|---|
| Target: | ATF2 |
| Alternative Name: | ATF2 (ATF2 Products) |
| Gene ID: | 6197 |
| UniProt: | P51812 , P18654 , D3Z8E0 |
| Pathways: | MAPK Signaling , RTK Signaling , Thyroid Hormone Synthesis , Activation of Innate immune Response , Chromatin Binding , Myometrial Relaxation and Contraction , Synaptic Membrane , Tube Formation , Toll-Like Receptors Cascades |

Application Details

| | |
|----------------|---|
| Sample Volume: | 100 µL |
| Plate: | Pre-coated |
| Protocol: | <ol style="list-style-type: none">1. Prepare all reagents and samples as instructed in the manual.2. Add 100 µL of sample or positive control to each well.3. Incubate 2.5 h at RT or O/N at 4 °C.4. Add 100 µL of prepared primary antibody to each well.5. Incubate 1 h at RT.6. Add 100 µL of prepared 1X HRP-Streptavidin to each well.7. Incubate 1 h at RT.8. Add 100 µL of TMB One-Step Substrate Reagent to each well.9. Incubate 30 min at RT. |

Application Details

10. Add 50 µL of Stop Solution to each well.
11. Read at 450 nm immediately.

Restrictions: For Research Use only

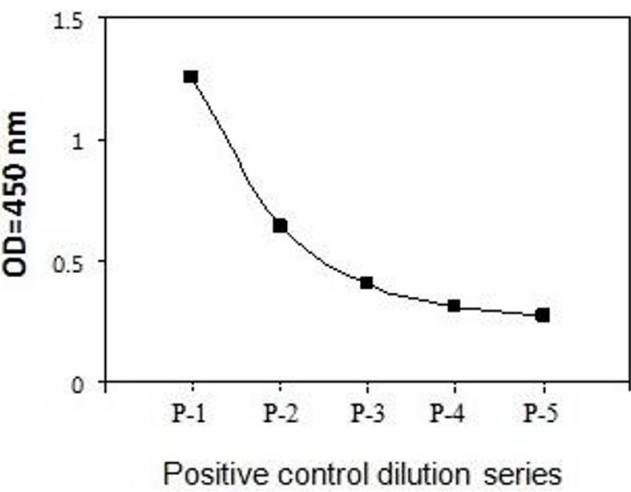
Handling

Storage: -20 °C

Storage Comment: Upon receipt, the kit should be stored at -20 °C. Please use within 6 months from the date of shipment. After initial use, Wash Buffer Concentrate (Item B), Assay Diluent (Item E), TMB One-Step Substrate Reagent (Item H), HRP-Streptavidin (Item G), Stop Solution (Item I) and Cell Lysate Buffer (Item J) should be stored at 4 °C to avoid repeated freeze-thaw cycles. Return unused wells to the pouch containing desiccant pack, reseal along entire edge and store at -20 °C. Reconstituted Positive Control (Item K) should be stored at -70 °C.

Expiry Date: 6 months

Images



ELISA

Image 1. HeLa cells were treated with Calyculin A. Solubilize cells at 4×10^7 cells/ml in Cell Lysate Buffer. Serial dilutions of lysates were analyzed in this ELISA.

ELISA

Image 2. HeLa cells were treated or untreated with Calyculin A. A. Cell lysates were analyzed using this phosphoELISA and Western Blot.

