

Datasheet for ABIN4886412
anti-ABL2 antibody (AA 1065-1182)[Go to Product page](#)

2 Images

Overview

Quantity:	100 µg
Target:	ABL2
Binding Specificity:	AA 1065-1182
Reactivity:	Human, Mouse
Host:	Rabbit
Clonality:	Polyclonal
Conjugate:	This ABL2 antibody is un-conjugated
Application:	Western Blotting (WB), Immunohistochemistry (Paraffin-embedded Sections) (IHC (p))

Product Details

Purpose:	Rabbit IgG polyclonal antibody for Abelson tyrosine-protein kinase 2 (ABL2) detection. Tested with WB, IHC-P in Human, Mouse.
Immunogen:	E. coli-derived human ABL2 recombinant protein (Position: T1065-R1182). Human ABL2 shares 97.5% amino acid (aa) sequence identity with mouse ABL2.
Isotype:	IgG
Cross-Reactivity (Details):	No cross reactivity with other proteins.
Characteristics:	<p>Rabbit IgG polyclonal antibody for Abelson tyrosine-protein kinase 2 (ABL2) detection. Tested with WB, IHC-P in Human, Mouse.</p> <p>Gene Name: ABL proto-oncogene 2, non-receptor tyrosine kinase</p> <p>Protein Name: Abelson tyrosine-protein kinase 2</p>
Purification:	Immunogen affinity purified.

Target Details

Target:	ABL2
Alternative Name:	ABL2 (ABL2 Products)
Background:	<p>Tyrosine-protein kinase ABL2, also known as Abelson-related gene (Arg), is an enzyme that in humans is encoded by the ABL2 gene. This gene encodes a member of the Abelson family of nonreceptor tyrosine protein kinases. The protein is highly similar to the c-abl oncogene 1 protein, including the tyrosine kinase, SH2 and SH3 domains, and it plays a role in cytoskeletal rearrangements through its C-terminal F-actin- and microtubule-binding sequences. This gene is expressed in both normal and tumor cells, and is involved in translocation with the ets variant 6 gene in leukemia. Multiple alternatively spliced transcript variants encoding different protein isoforms have been found for this gene.</p> <p>Synonyms: ABL2 ABL 2 ABL-2 ABLL ARG Abelson-related gene protein Tyrosine-protein kinase ARG P42684</p>
Gene ID:	27
UniProt:	P42684

Application Details

Application Notes:	<p>WB: Concentration: 0.1-0.5 µg/mL, Tested Species: Human, Mouse</p> <p>IHC-P: Concentration: 0.5-1 µg/mL, Tested Species: Human, Epitope Retrieval by Heat: Boiling the paraffin sections in 10 mM citrate buffer, pH 6.0, for 20 mins is required for the staining of formalin/paraffin sections.</p> <p>Notes: Tested Species: Species with positive results. Other applications have not been tested. Optimal dilutions should be determined by end users.</p>
Comment:	Antibody can be supported by chemiluminescence kit ABIN921124 in WB, supported by ABIN921231 in IHC(P).
Restrictions:	For Research Use only

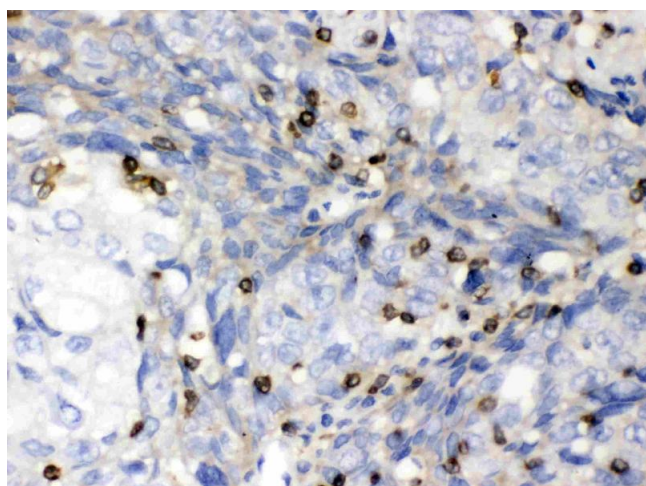
Handling

Format:	Lyophilized
Reconstitution:	Add 0.2 mL of distilled water will yield a concentration of 500 µg/mL.
Concentration:	500 µg/mL
Buffer:	Each vial contains 5 mg BSA, 0.9 mg NaCl, 0.2 mg Na2HPO4, 0.05 mg Sodium azide.

Handling

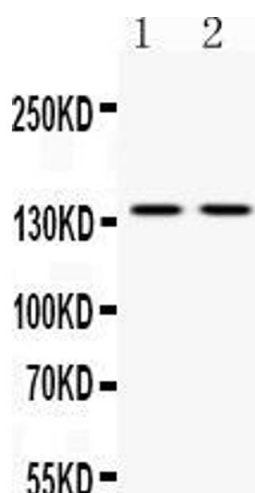
Preservative:	Sodium azide
Precaution of Use:	This product contains Sodium azide: a POISONOUS AND HAZARDOUS SUBSTANCE which should be handled by trained staff only.
Handling Advice:	Avoid repeated freezing and thawing.
Storage:	4 °C/-20 °C
Storage Comment:	At -20°C for one year. After reconstitution, at 4°C for one month. It can also be aliquotted and stored frozen at -20 °C for a longer time. Avoid repeated freezing and thawing.

Images



Immunohistochemistry

Image 1. ABL2 was detected in paraffin-embedded sections of human lung cancer tissues using rabbit anti- ABL2 Antigen Affinity purified polyclonal antibody (Catalog #) at 1 µg/mL. The immunohistochemical section was developed using SABC method (Catalog # SA1022).



Western Blotting

Image 2. Western blot analysis of ABL2 expression in mouse brain extract (Lane 1) and HELA whole cell lysates (Lane 2). ABL2 at 140KD was detected using rabbit anti-ABL2 Antigen Affinity purified polyclonal antibody (Catalog #) at 0.5 µg/mL. The blot was developed using chemiluminescence (ECL) method (Catalog # EK1002).