



Datasheet for ABIN4886422
anti-ACVR2A antibody (AA 421-513)



[Go to Product page](#)

2 Images

Overview

Quantity:	100 µg
Target:	ACVR2A
Binding Specificity:	AA 421-513
Reactivity:	Human, Rat
Host:	Rabbit
Clonality:	Polyclonal
Application:	Western Blotting (WB), Immunohistochemistry (Paraffin-embedded Sections) (IHC (p))

Product Details

Purpose:	Rabbit IgG polyclonal antibody for Activin receptor type-2A(ACVR2A) detection. Tested with WB, IHC-P in Human,Rat.
Immunogen:	E. coli-derived human ACVR2A recombinant protein (Position: Q421-L513). Human ACVR2A shares 100% and 98.9% amino acid (aa) sequence identity with mouse and rat ACVR2A, respectively.
Isotype:	IgG
Cross-Reactivity (Details):	No cross reactivity with other proteins.
Characteristics:	Rabbit IgG polyclonal antibody for Activin receptor type-2A(ACVR2A) detection. Tested with WB, IHC-P in Human,Rat. Gene Name: activin A receptor type 2A Protein Name: Activin receptor type-2A
Purification:	Immunogen affinity purified.

Target Details

Target:	ACVR2A
Alternative Name:	ACVR2A (ACVR2A Products)
Background:	<p>Activin receptor type-2A is a protein that in humans is encoded by the ACVR2A gene. ACVR2A is an activin type 2 receptor. This gene encodes a receptor that mediates the functions of activins, which are members of the transforming growth factor-beta (TGF-beta) superfamily involved in diverse biological processes. The encoded protein is a transmembrane serine-threonine kinase receptor which mediates signaling by forming heterodimeric complexes with various combinations of type I and type II receptors and ligands in a cell-specific manner. The encoded type II receptor is primarily involved in ligand-binding and includes an extracellular ligand-binding domain, a transmembrane domain and a cytoplasmic serine-threonine kinase domain. This gene may be associated with susceptibility to preeclampsia, a pregnancy-related disease which can result in maternal and fetal morbidity and mortality. Alternative splicing results in multiple transcript variants of this gene.</p> <p>Synonyms: ACTR 2 ACTR2 ACTR IIA ACTRIIA ACTR-IIA ACTRII Acvr 2 Acvr2 Acvr 2A Acvr2A P27037</p>

Gene ID: 92

UniProt: [P27037](#)

Application Details

Application Notes: WB: Concentration: 0.1-0.5 µg/mL, Tested Species: Human, Rat
IHC-P: Concentration: 0.5-1 µg/mL, Tested Species: Human, Epitope Retrieval by Heat: Boiling the paraffin sections in 10 mM citrate buffer, pH 6.0, for 20 mins is required for the staining of formalin/paraffin sections.
Notes: Tested Species: Species with positive results. Other applications have not been tested. Optimal dilutions should be determined by end users.

Comment: Antibody can be supported by chemiluminescence kit ABIN921124 in WB, supported by ABIN921231 in IHC(P).

Restrictions: For Research Use only

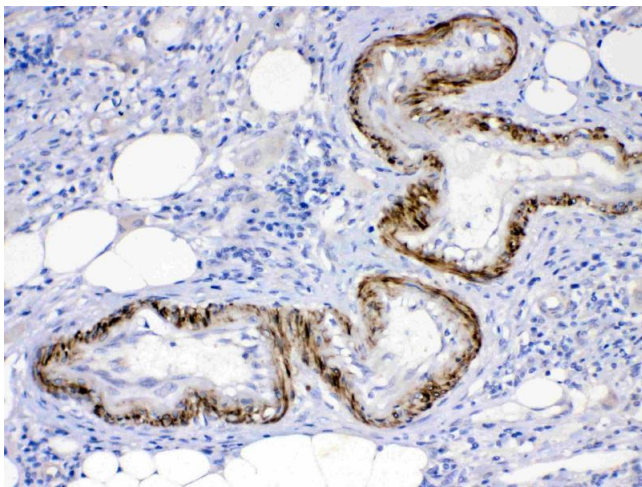
Handling

Format: Lyophilized

Handling

Reconstitution:	Add 0.2 mL of distilled water will yield a concentration of 500 µg/mL.
Concentration:	500 µg/mL
Buffer:	Each vial contains 5 mg BSA, 0.9 mg NaCl, 0.2 mg Na ₂ HPO ₄ , 0.05 mg Sodium azide.
Preservative:	Sodium azide
Precaution of Use:	This product contains Sodium azide: a POISONOUS AND HAZARDOUS SUBSTANCE which should be handled by trained staff only.
Handling Advice:	Avoid repeated freezing and thawing.
Storage:	4 °C/-20 °C
Storage Comment:	At -20°C for one year. After reconstitution, at 4°C for one month. It can also be aliquotted and stored frozen at -20 °C for a longer time. Avoid repeated freezing and thawing.

Images



Immunohistochemistry

Image 1. ACVR2A was detected in paraffin-embedded sections of human intestinal cancer tissues using rabbit anti- ACVR2A Antigen Affinity purified polyclonal antibody (Catalog #) at 1 µg/mL. The immunohistochemical section was developed using SABC method (Catalog # SA1022).



Western Blotting

Image 2. Western blot analysis of ACVR2A expression in rat kidney extract (Lane 1) and HELA whole cell lysates (Lane 2). ACVR2A at 75KD was detected using rabbit anti-ACVR2A Antigen Affinity purified polyclonal antibody (Catalog #) at 0.5 µg/mL. The blot was developed using chemiluminescence (ECL) method (Catalog # EK1002).