



[Go to Product page](#)

Datasheet for ABIN4886450  
**anti-ALDH1B1 antibody (N-Term)**

1 Image

Overview

Quantity:	100 µg
Target:	ALDH1B1
Binding Specificity:	AA 116-156, N-Term
Reactivity:	Human, Rat, Mouse
Host:	Rabbit
Clonality:	Polyclonal
Application:	Western Blotting (WB)

Product Details

Purpose:	Rabbit IgG polyclonal antibody for Aldehyde dehydrogenase X, mitochondrial(ALDH1B1) detection. Tested with WB in Human,Mouse,Rat.
Immunogen:	A synthetic peptide corresponding to a sequence at the N-terminus of human ALDH1B1 (116-156aa RYVLASLETLDNGKPFQESYALDLDEVIKVYRYFAGWADK W), different from the related mouse sequence by one amino acid, and from the related rat sequence by two amino acids.
Sequence:	RYVLASLETLDNGKPFQESYALDLDEVIKVYRYFAGWADK
Isotype:	IgG
Cross-Reactivity (Details):	No cross reactivity with other proteins.
Characteristics:	Rabbit IgG polyclonal antibody for Aldehyde dehydrogenase X, mitochondrial(ALDH1B1) detection. Tested with WB in Human,Mouse,Rat. Gene Name: aldehyde dehydrogenase 1 family member B1 Protein Name: Aldehyde dehydrogenase X, mitochondrial

## Product Details

---

Purification: Immunogen affinity purified.

## Target Details

---

Target: ALDH1B1

Alternative Name: ALDH1B1 ([ALDH1B1 Products](#))

Background: Aldehyde dehydrogenase X, mitochondrial is an enzyme that in humans is encoded by the ALDH1B1 gene. This protein belongs to the aldehyde dehydrogenases family of proteins. Aldehyde dehydrogenase is the second enzyme of the major oxidative pathway of alcohol metabolism. This gene does not contain introns in the coding sequence. The variation of this locus may affect the development of alcohol-related problems.

Synonyms: Acetaldehyde dehydrogenase 5 | Aldehyde dehydrogenase X | Aldh1b1 | ALDH5 | ALDHX | P30837

Gene ID: 219

UniProt: [P30837](#)

## Application Details

---

Application Notes: WB: Concentration: 0.1-0.5 µg/mL, Tested Species: Human, Mouse, Rat  
Notes: Tested Species: Species with positive results.  
Other applications have not been tested. Optimal dilutions should be determined by end users.

Comment: Antibody can be supported by chemiluminescence kit ABIN921124 in WB.

Restrictions: For Research Use only

## Handling

---

Format: Lyophilized

Reconstitution: Add 0.2 mL of distilled water will yield a concentration of 500 µg/mL.

Concentration: 500 µg/mL

Buffer: Each vial contains 5 mg BSA, 0.9 mg NaCl, 0.2 mg Na<sub>2</sub>HPO<sub>4</sub>, 0.05 mg Sodium azide.

Preservative: Sodium azide

Precaution of Use: This product contains Sodium azide: a POISONOUS AND HAZARDOUS SUBSTANCE which should be handled by trained staff only.

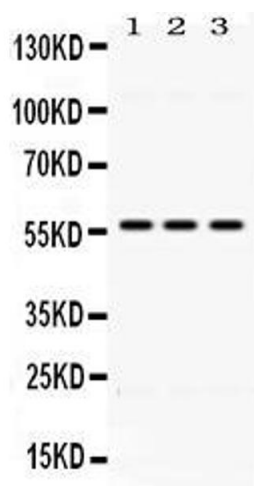
## Handling

Handling Advice: Avoid repeated freezing and thawing.

Storage: 4 °C/-20 °C

Storage Comment: At -20°C for one year. After reconstitution, at 4°C for one month.  
It can also be aliquotted and stored frozen at -20 °C for a longer time. Avoid repeated freezing and thawing.

## Images



### Western Blotting

**Image 1.** Western blot analysis of ALDH1B1 expression in rat liver extract ( Lane 1), mouse liver extract ( Lane 2) and HELA whole cell lysates ( Lane 3). ALDH1B1 at 57KD was detected using rabbit anti- ALDH1B1 Antigen Affinity purified polyclonal antibody (Catalog # ) at 0.5 µg/mL. The blot was developed using chemiluminescence (ECL) method (Catalog # EK1002).