

Datasheet for ABIN4886451  
**anti-ALDH3A2 antibody (AA 1-100)**



[Go to Product page](#)

2 Images

## Overview

Quantity:	100 µg
Target:	ALDH3A2
Binding Specificity:	AA 1-100
Reactivity:	Human, Rat
Host:	Rabbit
Clonality:	Polyclonal
Conjugate:	This ALDH3A2 antibody is un-conjugated
Application:	Western Blotting (WB), Immunohistochemistry (Paraffin-embedded Sections) (IHC (p))

## Product Details

Purpose:	Rabbit IgG polyclonal antibody for Fatty aldehyde dehydrogenase(ALDH3A2) detection. Tested with WB, IHC-P in Human,Rat.
Immunogen:	E.coli-derived human ALDH3A2 recombinant protein (Position: M1-Q100). Human ALDH3A2 shares 78% amino acid (aa) sequence identity with both mouse and rat ALDH3A2.
Isotype:	IgG
Cross-Reactivity (Details):	No cross reactivity with other proteins.
Characteristics:	<p>Rabbit IgG polyclonal antibody for Fatty aldehyde dehydrogenase(ALDH3A2) detection. Tested with WB, IHC-P in Human,Rat.</p> <p>Gene Name: aldehyde dehydrogenase 3 family member A2</p> <p>Protein Name: Fatty aldehyde dehydrogenase</p>
Purification:	Immunogen affinity purified.

## Target Details

Target:	ALDH3A2
Alternative Name:	ALDH3A2 ( <a href="#">ALDH3A2 Products</a> )
Background:	<p>Fatty aldehyde dehydrogenase (or Long-chain-aldehyde dehydrogenase) is an aldehyde dehydrogenase enzyme that in human is encoded in the ALDH3A2 gene on chromosome 17. ALDH3A2 catalyzes the oxidation of long-chain aliphatic aldehydes into fatty acids. It is known to act on a variety of both saturated and unsaturated aliphatic aldehydes between 6 to 24 carbons in length, as well as dihydrophytal, a 20-carbon branched chain aldehyde. It requires NAD<sup>+</sup> as a co-factor. The encoded enzyme is responsible for conversion of the sphingosine 1-phosphate (S1P) degradation product hexadecenal to hexadecenoic acid. ALD3H2 is expressed in the human liver and has been found to localize the microsome fraction inside the cell.</p> <p>Synonyms: Aldehyde dehydrogenase   Aldehyde dehydrogenase 10   ALDH10   ALDH3A2   FALDH   Fatty aldehyde dehydrogenase   Microsomal aldehyde dehydrogenase   SLS   P51648</p>
Gene ID:	224
UniProt:	<a href="#">P51648</a>

## Application Details

Application Notes:	<p>WB: Concentration: 0.1-0.5 µg/mL, Tested Species: Human, Rat</p> <p>IHC-P: Concentration: 0.5-1 µg/mL, Tested Species: Human, Epitope Retrieval by Heat: Boiling the paraffin sections in 10 mM citrate buffer, pH 6.0, for 20 mins is required for the staining of formalin/paraffin sections.</p> <p>Notes: Tested Species: Species with positive results. Other applications have not been tested. Optimal dilutions should be determined by end users.</p>
Comment:	Antibody can be supported by chemiluminescence kit ABIN921124 in WB, supported by ABIN921231 in IHC(P).
Restrictions:	For Research Use only

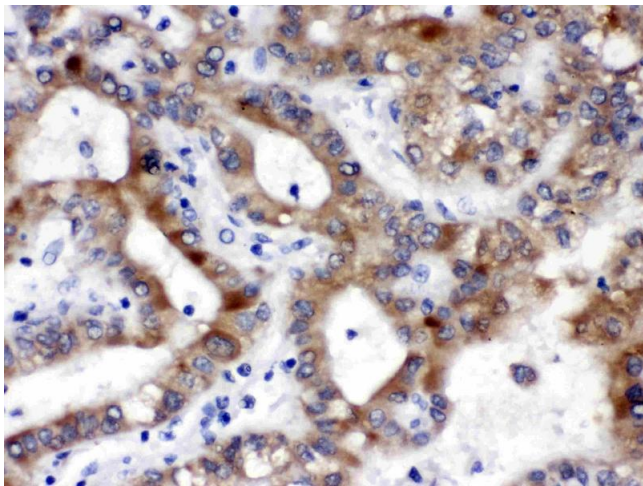
## Handling

Format:	Lyophilized
Reconstitution:	Add 0.2 mL of distilled water will yield a concentration of 500 µg/mL.
Concentration:	500 µg/mL
Buffer:	Each vial contains 5 mg BSA, 0.9 mg NaCl, 0.2 mg Na <sub>2</sub> HPO <sub>4</sub> , 0.05 mg Sodium azide.

## Handling

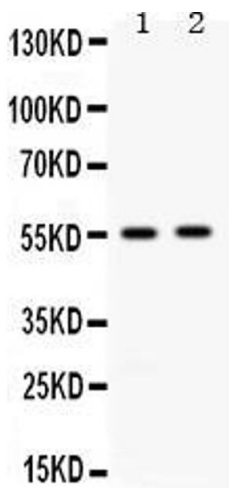
Preservative:	Sodium azide
Precaution of Use:	This product contains Sodium azide: a POISONOUS AND HAZARDOUS SUBSTANCE which should be handled by trained staff only.
Handling Advice:	Avoid repeated freezing and thawing.
Storage:	4 °C/-20 °C
Storage Comment:	At -20°C for one year. After reconstitution, at 4°C for one month. It can also be aliquotted and stored frozen at -20 °C for a longer time. Avoid repeated freezing and thawing.

## Images



### Immunohistochemistry

**Image 1.** ALDH3A2 was detected in paraffin-embedded sections of human liver cancer tissues using rabbit anti-ALDH3A2 Antigen Affinity purified polyclonal antibody (Catalog # ) at 1 µg/mL. The immunohistochemical section was developed using SABC method (Catalog # SA1022).



### Western Blotting

**Image 2.** Western blot analysis of ALDH3A2 expression in rat liver extract ( Lane 1) and 22RV1 whole cell lysates ( Lane 2). ALDH3A2 at 55KD was detected using rabbit anti-ALDH3A2 Antigen Affinity purified polyclonal antibody (Catalog # ) at 0.5 µg/mL. The blot was developed using chemiluminescence (ECL) method (Catalog # EK1002).