

Datasheet for ABIN4886491
anti-C1QBP antibody (AA 190-282)

4 Images

[Go to Product page](#)

Overview

Quantity:	100 µg
Target:	C1QBP
Binding Specificity:	AA 190-282
Reactivity:	Human, Mouse, Rat
Host:	Rabbit
Clonality:	Polyclonal
Application:	Western Blotting (WB), Immunohistochemistry (Paraffin-embedded Sections) (IHC (p))

Product Details

Purpose:	Rabbit IgG polyclonal antibody for Complement component 1 Q subcomponent-binding protein, mitochondrial(C1QBP) detection. Tested with WB, IHC-P in Human,Mouse,Rat.
Immunogen:	E. coli-derived human GC1q R recombinant protein (Position: E190-Q282). Human GC1q R shares 92.5% and 93.5% amino acid (aa) sequence identity with mouse and rat GC1q R, respectively.
Isotype:	IgG
Cross-Reactivity (Details):	No cross reactivity with other proteins.
Characteristics:	<p>Rabbit IgG polyclonal antibody for Complement component 1 Q subcomponent-binding protein, mitochondrial(C1QBP) detection. Tested with WB, IHC-P in Human,Mouse,Rat.</p> <p>Gene Name: complement component 1, q subcomponent binding protein</p> <p>Protein Name: Complement component 1 Q subcomponent-binding protein, mitochondrial</p>
Purification:	Immunogen affinity purified.

Target Details

Target:	C1QBP
Alternative Name:	C1QBP (C1QBP Products)
Background:	<p>Complement component 1 Q subcomponent-binding protein, mitochondrial is a protein that in humans is encoded by the C1QBP gene. This gene is mapped to 17p13.3 in a region conserved with mouse chromosome 11. The human complement subcomponent C1q associates with C1r and C1s in order to yield the first component of the serum complement system. The protein encoded by this gene is known to bind to the globular heads of C1q molecules and inhibit C1 activation. This protein has also been identified as the p32 subunit of pre-mRNA splicing factor SF2, as well as a hyaluronic acid-binding protein.</p> <p>Synonyms: C1qBP GC1Q R GC1QR GC1QBP GC1q R protein GC1q-R protein HABP 1 HABP1 p32 p33 SF2p32 Q07021</p>
Gene ID:	708
UniProt:	Q07021
Pathways:	Ribonucleoprotein Complex Subunit Organization , Ribosome Assembly

Application Details

Application Notes:	<p>WB: Concentration: 0.1-0.5 µg/mL, Tested Species: Human, Mouse, Rat</p> <p>IHC-P: Concentration: 0.5-1 µg/mL, Tested Species: Human, Mouse, Rat, Epitope Retrieval by Heat: Boiling the paraffin sections in 10 mM citrate buffer, pH 6.0, for 20 mins is required for the staining of formalin/paraffin sections.</p> <p>Notes: Tested Species: Species with positive results. Other applications have not been tested. Optimal dilutions should be determined by end users.</p>
Comment:	Antibody can be supported by chemiluminescence kit ABIN921124 in WB, supported by ABIN921231 in IHC(P).
Restrictions:	For Research Use only

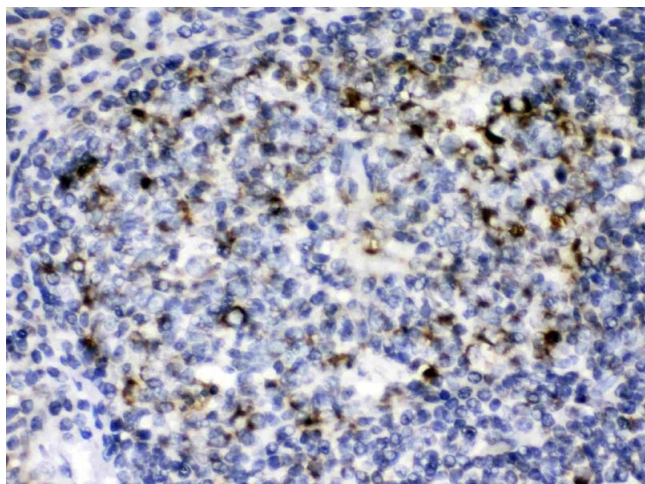
Handling

Format:	Lyophilized
Reconstitution:	Add 0.2 mL of distilled water will yield a concentration of 500 µg/mL.
Concentration:	500 µg/mL

Handling

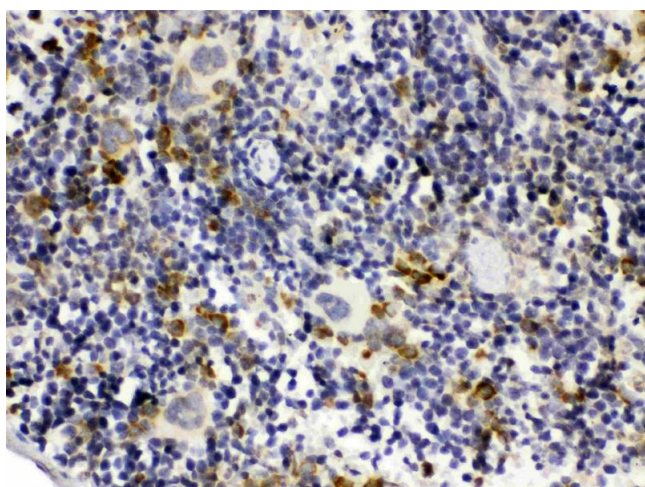
Buffer:	Each vial contains 5 mg BSA, 0.9 mg NaCl, 0.2 mg Na ₂ HPO ₄ , 0.05 mg Sodium azide.
Preservative:	Sodium azide
Precaution of Use:	This product contains Sodium azide: a POISONOUS AND HAZARDOUS SUBSTANCE which should be handled by trained staff only.
Handling Advice:	Avoid repeated freezing and thawing.
Storage:	4 °C/-20 °C
Storage Comment:	At -20°C for one year. After reconstitution, at 4°C for one month. It can also be aliquotted and stored frozen at -20 °C for a longer time. Avoid repeated freezing and thawing.

Images



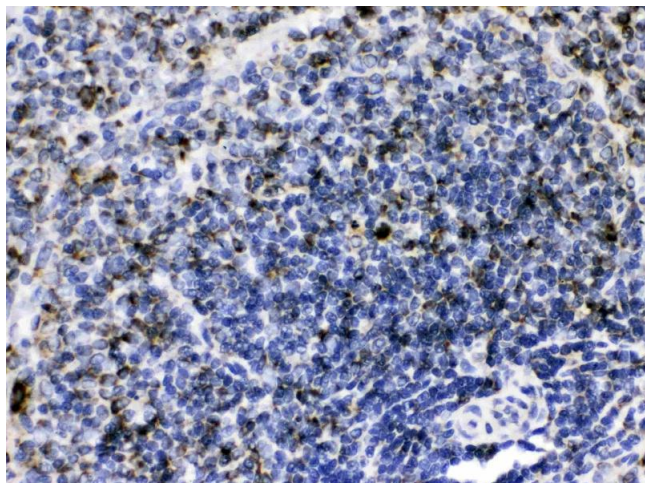
Immunohistochemistry

Image 1. GC1q R was detected in paraffin-embedded sections of human tonsil tissues using rabbit anti- GC1q R Antigen Affinity purified polyclonal antibody (Catalog #) at 1 µg/mL. The immunohistochemical section was developed using SABC method (Catalog # SA1022).



Immunohistochemistry

Image 2. GC1q R was detected in paraffin-embedded sections of mouse spleen tissues using rabbit anti- GC1q R Antigen Affinity purified polyclonal antibody (Catalog #) at 1 µg/mL. The immunohistochemical section was developed using SABC method (Catalog # SA1022).



Immunohistochemistry

Image 3. GC1q R was detected in paraffin-embedded sections of rat spleen tissues using rabbit anti- GC1q R Antigen Affinity purified polyclonal antibody (Catalog #) at 1 $\mu\text{g/mL}$. The immunohistochemical section was developed using SABC method (Catalog # SA1022).

Please check the [product details page](#) for more images. Overall 4 images are available for ABIN4886491.