

Datasheet for ABIN4886509  
**anti-Cyclin T1 antibody (Middle Region)**

## 4 Images

[Go to Product page](#)

## Overview

Quantity:	100 µg
Target:	Cyclin T1 (CCNT1)
Binding Specificity:	AA 375-410, Middle Region
Reactivity:	Human, Mouse, Rat
Host:	Rabbit
Clonality:	Polyclonal
Application:	Western Blotting (WB), Immunohistochemistry (Paraffin-embedded Sections) (IHC (p))

## Product Details

Purpose:	Rabbit IgG polyclonal antibody for Cyclin-T1(CCNT1) detection. Tested with WB, IHC-P in Human,Mouse,Rat.
Immunogen:	A synthetic peptide corresponding to a sequence in the middle region of human Cyclin T1 (375-410aa QKQNSKSVPSAKVSLKEYRAKHAEELAAQKRQLENM), different from the related mouse sequence by one amino acid.
Sequence:	QKQNSKSVPS AKVSLKEYRA KHAEELAAQK RQLENM
Isotype:	IgG
Cross-Reactivity (Details):	No cross reactivity with other proteins.
Characteristics:	Rabbit IgG polyclonal antibody for Cyclin-T1(CCNT1) detection. Tested with WB, IHC-P in Human,Mouse,Rat. Gene Name: cyclin T1 Protein Name: Cyclin-T1

## Product Details

Purification: Immunogen affinity purified.

## Target Details

Target: Cyclin T1 (CCNT1)

Alternative Name: CCNT1 ([CCNT1 Products](#))

Background: Cyclin-T1 is a protein that in humans is encoded by the CCNT1 gene. This gene encodes a member of the highly conserved cyclin C subfamily. The encoded protein tightly associates with cyclin-dependent kinase 9, and is a major subunit of positive transcription elongation factor b (p-TEFb). In humans, there are multiple forms of positive transcription elongation factor b, which may include one of several different cyclins along with cyclin-dependent kinase 9. The complex containing the encoded cyclin and cyclin-dependent kinase 9 acts as a cofactor of human immunodeficiency virus type 1 (HIV-1) Tat protein, and is both necessary and sufficient for full activation of viral transcription. This cyclin and its kinase partner are also involved in triggering transcript elongation through phosphorylation of the carboxy-terminal domain of the largest RNA polymerase II subunit. Overexpression of this gene is implicated in tumor growth. Alternative splicing results in multiple transcript variants.

Synonyms: CCN T1 | CCNT | CCNT 1 | CCNT1 | CyclinT | Cyclin T | Cyclin-T | cyclinT1 | cyclin-T1 | cyclin T1 | Cyclin T1b | CYCT 1 | CYCT1 | HIVE1 | O60563

Gene ID: 904

UniProt: [O60563](#)

## Application Details

Application Notes: WB: Concentration: 0.1-0.5 µg/mL, Tested Species: Human, Mouse, Rat  
IHC-P: Concentration: 0.5-1 µg/mL, Tested Species: Human, Mouse, Rat, Epitope Retrieval by Heat: Boiling the paraffin sections in 10 mM citrate buffer, pH 6.0, for 20 mins is required for the staining of formalin/paraffin sections.  
Notes: Tested Species: Species with positive results. Other applications have not been tested. Optimal dilutions should be determined by end users.

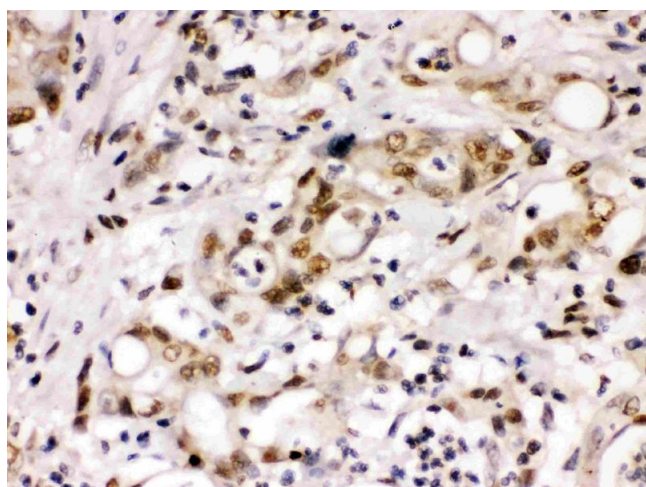
Comment: Antibody can be supported by chemiluminescence kit ABIN921124 in WB, supported by ABIN921231 in IHC(P).

Restrictions: For Research Use only

## Handling

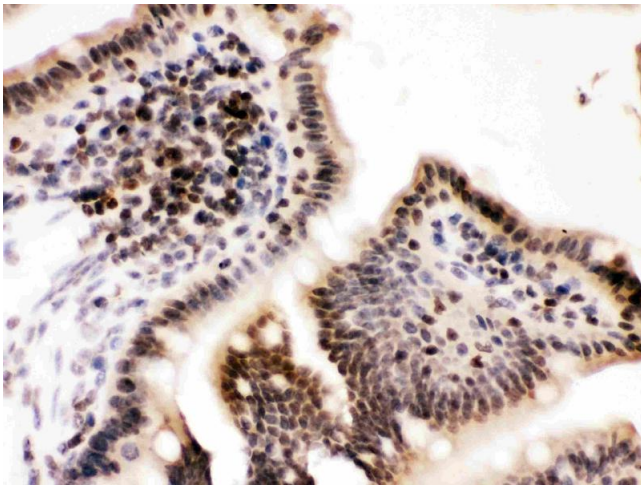
Format:	Lyophilized
Reconstitution:	Add 0.2 mL of distilled water will yield a concentration of 500 µg/mL.
Concentration:	500 µg/mL
Buffer:	Each vial contains 5 mg BSA, 0.9 mg NaCl, 0.2 mg Na <sub>2</sub> HPO <sub>4</sub> , 0.05 mg Sodium azide.
Preservative:	Sodium azide
Precaution of Use:	This product contains Sodium azide: a POISONOUS AND HAZARDOUS SUBSTANCE which should be handled by trained staff only.
Handling Advice:	Avoid repeated freezing and thawing.
Storage:	4 °C/-20 °C
Storage Comment:	At -20°C for one year. After reconstitution, at 4°C for one month. It can also be aliquotted and stored frozen at -20 °C for a longer time. Avoid repeated freezing and thawing.

## Images



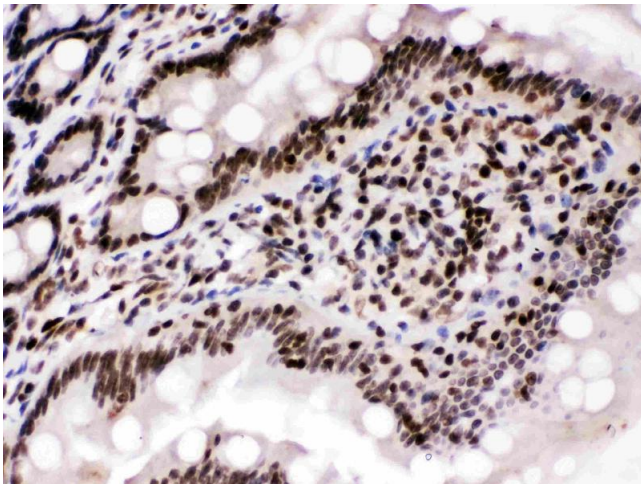
### Immunohistochemistry

**Image 1.** Cyclin T1 was detected in paraffin-embedded sections of human intestinal cancer tissues using rabbit anti- Cyclin T1 Antigen Affinity purified polyclonal antibody (Catalog # ) at 1 µg/mL. The immunohistochemical section was developed using SABC method (Catalog # SA1022).



#### Immunohistochemistry

**Image 2.** Cyclin T1 was detected in paraffin-embedded sections of mouse intestine tissues using rabbit anti- Cyclin T1 Antigen Affinity purified polyclonal antibody (Catalog # ) at 1 µg/mL. The immunohistochemical section was developed using SABC method (Catalog # SA1022).



#### Immunohistochemistry

**Image 3.** Cyclin T1 was detected in paraffin-embedded sections of rat intestine tissues using rabbit anti- Cyclin T1 Antigen Affinity purified polyclonal antibody (Catalog # ) at 1 µg/mL. The immunohistochemical section was developed using SABC method (Catalog # SA1022).

Please check the [product details page](#) for more images. Overall 4 images are available for ABIN4886509.