

Datasheet for ABIN4886515
anti-CCT5 antibody (AA 443-535)

5 Images

[Go to Product page](#)

Overview

Quantity:	100 µg
Target:	CCT5
Binding Specificity:	AA 443-535
Reactivity:	Human, Mouse, Rat
Host:	Rabbit
Clonality:	Polyclonal
Application:	Western Blotting (WB), Immunohistochemistry (Paraffin-embedded Sections) (IHC (p)), Immunocytochemistry (ICC)

Product Details

Purpose:	Rabbit IgG polyclonal antibody for T-complex protein 1 subunit epsilon(CCT5) detection. Tested with WB, IHC-P, ICC in Human,Mouse,Rat.
Immunogen:	E. coli-derived human TCP1 epsilon recombinant protein (Position: L443-K535). Human TCP1 epsilon shares 95.7% amino acid (aa) sequence identity with both mouse and rat TCP1 epsilon.
Isotype:	IgG
Cross-Reactivity (Details):	No cross reactivity with other proteins.
Characteristics:	<p>Rabbit IgG polyclonal antibody for T-complex protein 1 subunit epsilon(CCT5) detection. Tested with WB, IHC-P, ICC in Human,Mouse,Rat.</p> <p>Gene Name: chaperonin containing TCP1 subunit 5</p> <p>Protein Name: T-complex protein 1 subunit epsilon</p>
Purification:	Immunogen affinity purified.

Target Details

Target:	CCT5
Alternative Name:	CCT5 (CCT5 Products)
Background:	<p>CCT5 is a molecular chaperone that is a member of the chaperonin containing TCP1 complex (CCT), also known as the TCP1 ring complex (TRiC). This complex consists of two identical stacked rings, each containing eight different proteins. Unfolded polypeptides enter the central cavity of the complex and are folded in an ATP-dependent manner. The complex folds various proteins, including actin and tubulin. Mutations in this gene cause hereditary sensory and autonomic neuropathy with spastic paraplegia (HSNSP). Alternative splicing results in multiple transcript variants. Related pseudogenes have been identified on chromosomes 5 and 13.</p> <p>Synonyms: CCT5 CCT 5 CCTepsilon CCT epsilon TCP 1 epsilon TCP1epsilon TCPE P48643</p>
Gene ID:	22948
UniProt:	P48643

Application Details

Application Notes:	<p>WB: Concentration: 0.1-0.5 µg/mL, Tested Species: Human, Rat</p> <p>IHC-P: Concentration: 0.5-1 µg/mL, Tested Species: Human, Mouse, Rat, Epitope Retrieval by Heat: Boiling the paraffin sections in 10 mM citrate buffer, pH 6.0, for 20 mins is required for the staining of formalin/paraffin sections.</p> <p>ICC: Concentration: 0.5-1 µg/mL, Tested Species: Human</p> <p>Notes: Tested Species: Species with positive results. Other applications have not been tested. Optimal dilutions should be determined by end users.</p>
Comment:	Antibody can be supported by chemiluminescence kit ABIN921124 in WB, supported by ABIN921231 in IHC(P) and ICC.
Restrictions:	For Research Use only

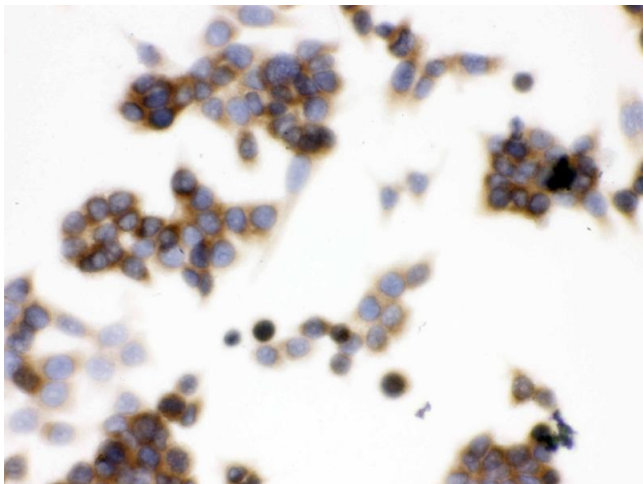
Handling

Format:	Lyophilized
Reconstitution:	Add 0.2 mL of distilled water will yield a concentration of 500 µg/mL.
Concentration:	500 µg/mL
Buffer:	Each vial contains 5 mg BSA, 0.9 mg NaCl, 0.2 mg Na2HPO4, 0.05 mg Sodium azide.

Handling

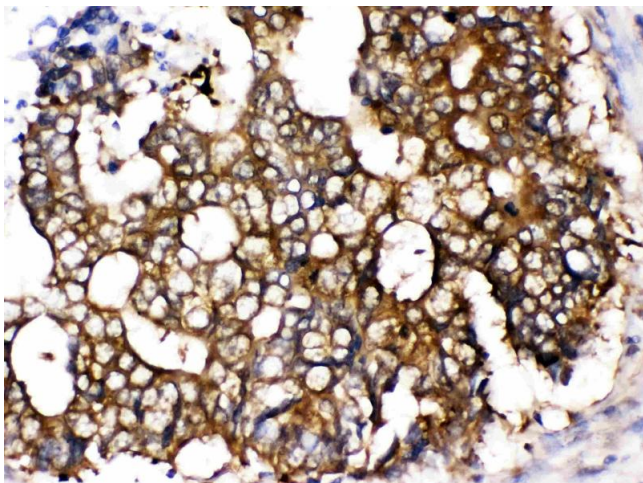
Preservative:	Sodium azide
Precaution of Use:	This product contains Sodium azide: a POISONOUS AND HAZARDOUS SUBSTANCE which should be handled by trained staff only.
Handling Advice:	Avoid repeated freezing and thawing.
Storage:	4 °C/-20 °C
Storage Comment:	At -20°C for one year. After reconstitution, at 4°C for one month. It can also be aliquotted and stored frozen at -20 °C for a longer time. Avoid repeated freezing and thawing.

Images



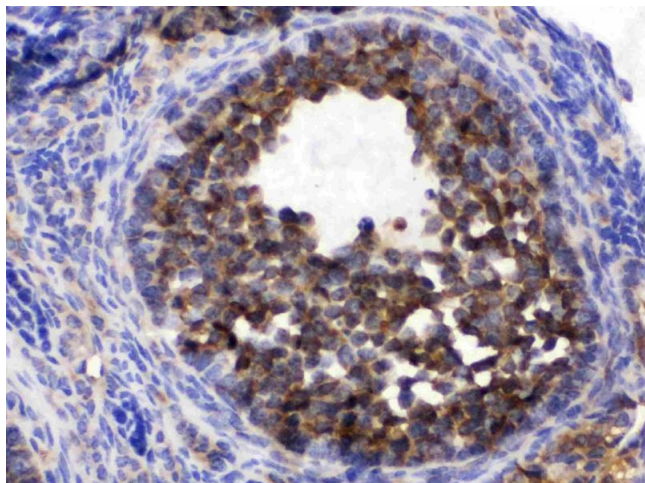
Immunohistochemistry

Image 1. IHC analysis of TCP1 epsilon using anti-TCP1 epsilon antibody . TCP1 epsilon was detected in immunocytochemical section of LOVO cell. Heat mediated antigen retrieval was performed in citrate buffer (pH6, epitope retrieval solution) for 20 mins. The tissue section was blocked with 10% goat serum. The tissue section was then incubated with 1µg/ml rabbit anti-TCP1 epsilon Antibody overnight at 4°C. Biotinylated goat anti-rabbit IgG was used as secondary antibody and incubated for 30 minutes at 37°C. The tissue section was developed using Streptavidin-Biotin-Complex (SABC)(Catalog # SA1022) with DAB as the chromogen.



Immunohistochemistry

Image 2. TCP1 epsilon was detected in paraffin-embedded sections of human intestinal cancer tissues using rabbit anti- TCP1 epsilon Antigen Affinity purified polyclonal antibody (Catalog #) at 1 µg/mL. The immunohistochemical section was developed using SABC method (Catalog # SA1022).



Immunohistochemistry

Image 3. TCP1 epsilon was detected in paraffin-embedded sections of mouse ovary tissues using rabbit anti- TCP1 epsilon Antigen Affinity purified polyclonal antibody (Catalog #) at 1 μ g/mL. The immunohistochemical section was developed using SABC method (Catalog # SA1022).

Please check the [product details page](#) for more images. Overall 5 images are available for ABIN4886515.