



[Go to Product page](#)

Datasheet for ABIN4886516  
**anti-CCT8 antibody (AA 421-548)**

4 Images

### Overview

Quantity:	100 µg
Target:	CCT8
Binding Specificity:	AA 421-548
Reactivity:	Human, Mouse, Rat
Host:	Rabbit
Clonality:	Polyclonal
Application:	Western Blotting (WB), Immunohistochemistry (Paraffin-embedded Sections) (IHC (p))

### Product Details

Purpose:	Rabbit IgG polyclonal antibody for T-complex protein 1 subunit theta(CCT8) detection. Tested with WB, IHC-P in Human,Mouse,Rat.
Immunogen:	E.coli-derived human TCP1 theta recombinant protein (Position: K421-D548). Human TCP1 theta shares 98.4% amino acid (aa) sequence identity with mouse TCP1 theta.
Isotype:	IgG
Cross-Reactivity (Details):	No cross reactivity with other proteins.
Characteristics:	Rabbit IgG polyclonal antibody for T-complex protein 1 subunit theta(CCT8) detection. Tested with WB, IHC-P in Human,Mouse,Rat. Gene Name: chaperonin containing TCP1 subunit 8 Protein Name: T-complex protein 1 subunit theta
Purification:	Immunogen affinity purified.

## Target Details

---

Target:	CCT8
Alternative Name:	CCT8 ( <a href="#">CCT8 Products</a> )
Background:	<p>T-complex protein 1 subunit theta is a protein that in humans is encoded by the CCT8 gene. This gene encodes the theta subunit of the CCT chaperonin, which is abundant in the eukaryotic cytosol and may be involved in the transport and assembly of newly synthesized proteins. Alternative splicing results in multiple transcript variants of this gene. A pseudogene related to this gene is located on chromosome 1.</p> <p>Synonyms: C21orf112   CCT8   CCT 8   CCT theta   CCTQ   D21S246   KIAA0002   PRED71   TCP 1 theta   Tcpq   P50990</p>
Gene ID:	10694
UniProt:	<a href="#">P50990</a>

## Application Details

---

Application Notes:	<p>WB: Concentration: 0.1-0.5 µg/mL, Tested Species: Human, Mouse, Rat</p> <p>IHC-P: Concentration: 0.5-1 µg/mL, Tested Species: Human, Mouse, Rat, Epitope Retrieval by Heat: Boiling the paraffin sections in 10 mM citrate buffer, pH 6.0, for 20 mins is required for the staining of formalin/paraffin sections.</p> <p>Notes: Tested Species: Species with positive results. Other applications have not been tested. Optimal dilutions should be determined by end users.</p>
Comment:	Antibody can be supported by chemiluminescence kit ABIN921124 in WB, supported by ABIN921231 in IHC(P).
Restrictions:	For Research Use only

## Handling

---

Format:	Lyophilized
Reconstitution:	Add 0.2 mL of distilled water will yield a concentration of 500 µg/mL.
Concentration:	500 µg/mL
Buffer:	Each vial contains 5 mg BSA, 0.9 mg NaCl, 0.2 mg Na <sub>2</sub> HPO <sub>4</sub> , 0.05 mg Sodium azide.
Preservative:	Sodium azide
Precaution of Use:	This product contains Sodium azide: a POISONOUS AND HAZARDOUS SUBSTANCE which

## Handling

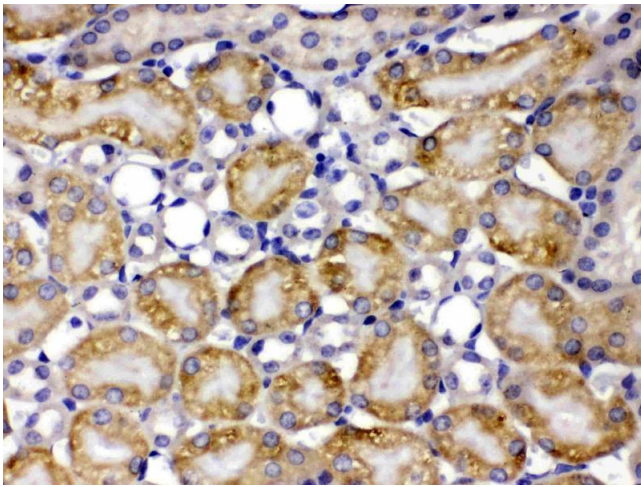
should be handled by trained staff only.

Handling Advice: Avoid repeated freezing and thawing.

Storage: 4 °C/-20 °C

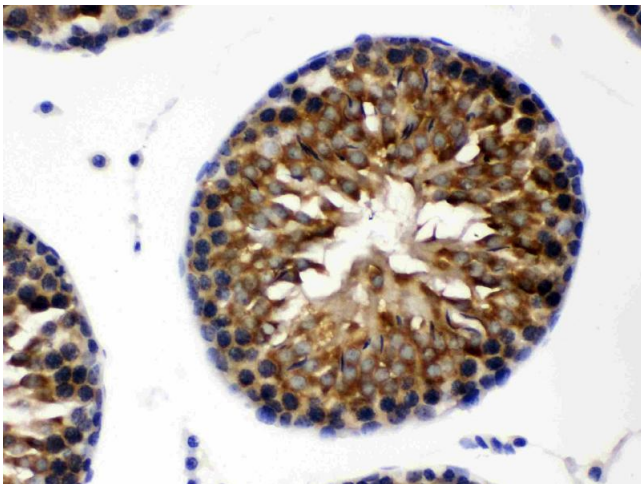
Storage Comment: At -20°C for one year. After reconstitution, at 4°C for one month.  
It can also be aliquotted and stored frozen at -20 °C for a longer time. Avoid repeated freezing and thawing.

## Images



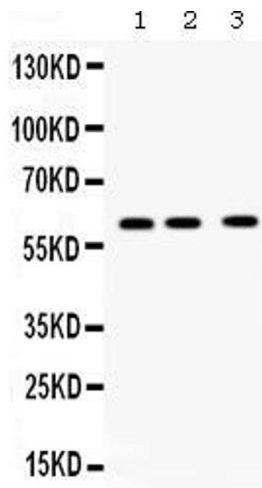
### Immunohistochemistry

**Image 1.** TCP1 theta was detected in paraffin-embedded sections of mouse kidney tissues using rabbit anti- TCP1 theta Antigen Affinity purified polyclonal antibody (Catalog # ) at 1 µg/mL. The immunohistochemical section was developed using SABC method (Catalog # SA1022).



### Immunohistochemistry

**Image 2.** TCP1 theta was detected in paraffin-embedded sections of rat testis tissues using rabbit anti- TCP1 theta Antigen Affinity purified polyclonal antibody (Catalog # ) at 1 µg/mL. The immunohistochemical section was developed using SABC method (Catalog # SA1022).



### Western Blotting

**Image 3.** Western blot analysis of TCP1 theta expression in rat brain extract ( Lane 1), mouse brain extract ( Lane 2) and U2OS whole cell lysates ( Lane 3). TCP1 theta at 60KD was detected using rabbit anti- TCP1 theta Antigen Affinity purified polyclonal antibody (Catalog # ) at 0.5 µg/mL. The blot was developed using chemiluminescence (ECL) method (Catalog # EK1002).

Please check the [product details page](#) for more images. Overall 4 images are available for ABIN4886516.