

Datasheet for ABIN4886538
anti-Cofilin 2 antibody (C-Term)

4 Images

[Go to Product page](#)

Overview

Quantity:	100 µg
Target:	Cofilin 2 (CFL2)
Binding Specificity:	AA 121-153, C-Term
Reactivity:	Human, Mouse, Rat
Host:	Rabbit
Clonality:	Polyclonal
Application:	Western Blotting (WB), Immunohistochemistry (Paraffin-embedded Sections) (IHC (p))

Product Details

Purpose:	Rabbit IgG polyclonal antibody for Cofilin-2(CFL2) detection. Tested with WB, IHC-P in Human,Mouse,Rat.
Immunogen:	A synthetic peptide corresponding to a sequence at the C-terminus of human Cofilin 2 (121-153aa KDAIKKKFTGIKHEWQVNGLDDIKDRSTLGEKL), identical to the related mouse sequence.
Sequence:	KDAIKKKFTG IKHEWQVNGL DDIKDRSTLG EKL
Isotype:	IgG
Cross-Reactivity (Details):	No cross reactivity with other proteins.
Characteristics:	Rabbit IgG polyclonal antibody for Cofilin-2(CFL2) detection. Tested with WB, IHC-P in Human,Mouse,Rat. Gene Name: cofilin 2 Protein Name: Cofilin-2
Purification:	Immunogen affinity purified.

Target Details

Target:	Cofilin 2 (CFL2)
Alternative Name:	CFL2 (CFL2 Products)
Background:	<p>Cofilin 2 (muscle), also known as CFL2, is a protein which in humans is encoded by the CFL2 gene. It is mapped to 14q12. This gene encodes an intracellular protein that is involved in the regulation of actin-filament dynamics. And this protein is a major component of intranuclear and cytoplasmic actin rods. It can bind G- and F-actin in a 1:1 ratio of cofilin to actin, and it reversibly controls actin polymerization and depolymerization in a pH -dependent manner. Mutations in this gene cause nemaline myopathy type 7, a form of congenital myopathy. Alternative splicing results in multiple transcript variants.</p> <p>Synonyms: CFL 2 CFL2 CFL-2 Cofilin 2 muscle Cofilin Cofilin muscle Cofilin2 Cofilin 2 Cofilin-2 NEM 7 NEM7 Q9Y281</p>
Gene ID:	1073
UniProt:	Q9Y281
Pathways:	Caspase Cascade in Apoptosis

Application Details

Application Notes:	<p>WB: Concentration: 0.1-0.5 µg/mL, Tested Species: Human, Mouse, Rat</p> <p>IHC-P: Concentration: 0.5-1 µg/mL, Tested Species: Human, Mouse, Rat, Epitope Retrieval by Heat: Boiling the paraffin sections in 10 mM citrate buffer, pH 6.0, for 20 mins is required for the staining of formalin/paraffin sections.</p> <p>Notes: Tested Species: Species with positive results. Other applications have not been tested. Optimal dilutions should be determined by end users.</p>
Comment:	Antibody can be supported by chemiluminescence kit ABIN921124 in WB, supported by ABIN921231 in IHC(P).
Restrictions:	For Research Use only

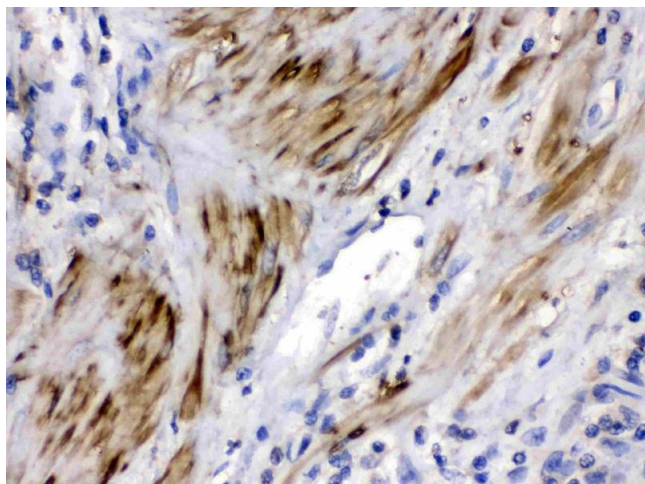
Handling

Format:	Lyophilized
Reconstitution:	Add 0.2 mL of distilled water will yield a concentration of 500 µg/mL.
Concentration:	500 µg/mL

Handling

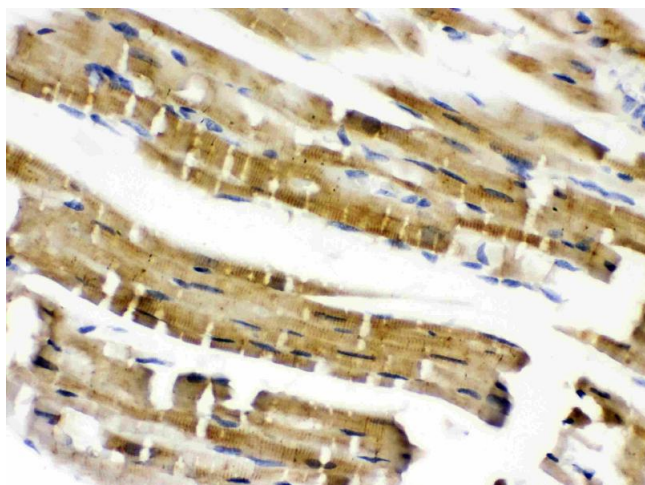
Buffer:	Each vial contains 5 mg BSA, 0.9 mg NaCl, 0.2 mg Na ₂ HPO ₄ , 0.05 mg Sodium azide.
Preservative:	Sodium azide
Precaution of Use:	This product contains Sodium azide: a POISONOUS AND HAZARDOUS SUBSTANCE which should be handled by trained staff only.
Handling Advice:	Avoid repeated freezing and thawing.
Storage:	4 °C/-20 °C
Storage Comment:	At -20°C for one year. After reconstitution, at 4°C for one month. It can also be aliquotted and stored frozen at -20 °C for a longer time. Avoid repeated freezing and thawing.

Images



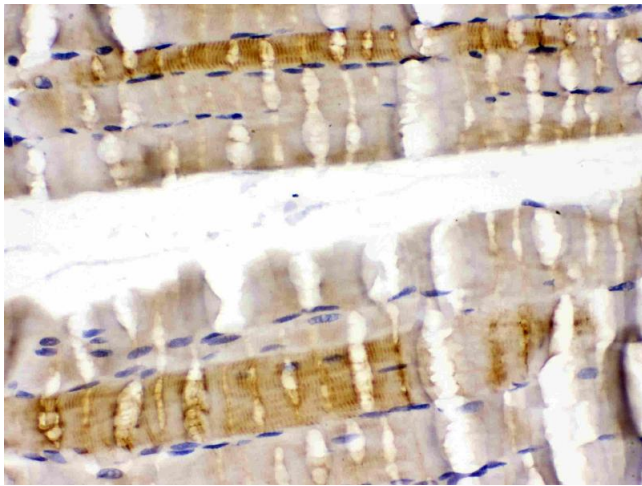
Immunohistochemistry

Image 1. Cofilin 2 was detected in paraffin-embedded sections of human prostatic cancer tissues using rabbit anti- Cofilin 2 Antigen Affinity purified polyclonal antibody (Catalog #) at 1 µg/mL. The immunohistochemical section was developed using SABC method (Catalog # SA1022).



Immunohistochemistry

Image 2. Cofilin 2 was detected in paraffin-embedded sections of mouse cardiac muscle tissues using rabbit anti- Cofilin 2 Antigen Affinity purified polyclonal antibody (Catalog #) at 1 µg/mL. The immunohistochemical section was developed using SABC method (Catalog # SA1022).



Immunohistochemistry

Image 3. Cofilin 2 was detected in paraffin-embedded sections of rat skeletal muscle tissues using rabbit anti-Cofilin 2 Antigen Affinity purified polyclonal antibody (Catalog #) at 1 µg/mL. The immunohistochemical section was developed using SABC method (Catalog # SA1022).

Please check the [product details page](#) for more images. Overall 4 images are available for ABIN4886538.