



[Go to Product page](#)

Datasheet for ABIN4886551  
**anti-CXCL13 antibody (AA 22-109)**

2 Images

Overview

Quantity:	100 µg
Target:	CXCL13
Binding Specificity:	AA 22-109
Reactivity:	Mouse
Host:	Rabbit
Clonality:	Polyclonal
Application:	Western Blotting (WB), ELISA, Immunohistochemistry (Paraffin-embedded Sections) (IHC (p))

Product Details

Purpose:	Rabbit IgG polyclonal antibody for C-X-C motif chemokine 13(CXCL13) detection. Tested with WB, IHC-P, ELISA in Mouse.
Immunogen:	E. coli-derived mouse BCA1 recombinant protein (Position: I22-A109). Mouse BCA1 shares 45.3% amino acid (aa) sequence identity with human BCA1.
Isotype:	IgG
Cross-Reactivity (Details):	No cross reactivity with other proteins.
Characteristics:	Rabbit IgG polyclonal antibody for C-X-C motif chemokine 13(CXCL13) detection. Tested with WB, IHC-P, ELISA in Mouse. Gene Name: chemokine (C-X-C motif) ligand 13 Protein Name: C-X-C motif chemokine 13
Purification:	Immunogen affinity purified.

## Target Details

---

Target:	CXCL13
Alternative Name:	CXCL13 ( <a href="#">CXCL13 Products</a> )
Background:	<p>C-X-C motif chemokine 13 (CXCL13), also known as B cell-attracting chemokine 1 (BCA-1), is a protein that in humans is encoded by the CXCL13 gene. CXCL13 is a small cytokine belonging to the CXC chemokine family. Its gene is mapped to human chromosome 4 in a cluster of other CXC chemokines. This protein has contained 109 amino acids. It is expressed highly in the liver, spleen, lymph nodes and gut of humans. The protein induces chemotaxis of BLR1-expressing B cells.</p> <p>Synonyms: ANGIE   B cell attracting chemokine 1   B cell-attracting chemokine 1   BCA 1   BCA1   BCA-1   BCA1   BLC   SCYB13   Blc   Scyb13   CXC chemokine BLC   CXCL13   CXL13   Small inducible cytokine B13   Small-inducible cytokine B13   O43927</p>
Gene ID:	55985
UniProt:	<a href="#">O55038</a>

## Application Details

---

Application Notes:	<p>WB: Concentration: 0.1-0.5 µg/mL, Tested Species: Mouse</p> <p>IHC-P: Concentration: 0.5-1 µg/mL, Tested Species: Mouse, Epitope Retrieval by Heat: Boiling the paraffin sections in 10 mM citrate buffer, pH 6.0, for 20 mins is required for the staining of formalin/paraffin sections.</p> <p>ELISA: Concentration: 0.1-0.5 µg/mL, Tested Species: Mouse</p> <p>Notes: Tested Species: Species with positive results. Other applications have not been tested. Optimal dilutions should be determined by end users.</p>
Comment:	Antibody can be supported by chemiluminescence kit ABIN921124 in WB, supported by ABIN921231 in IHC(P).
Restrictions:	For Research Use only

## Handling

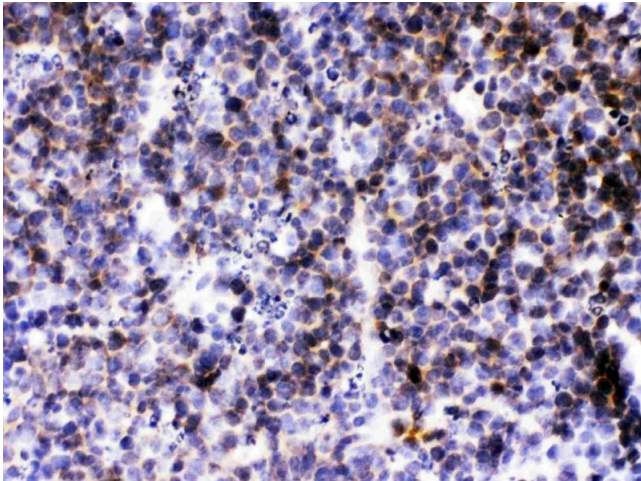
---

Format:	Lyophilized
Reconstitution:	Add 0.2 mL of distilled water will yield a concentration of 500 µg/mL.
Concentration:	500 µg/mL

## Handling

Buffer:	Each vial contains 5 mg BSA, 0.9 mg NaCl, 0.2 mg Na <sub>2</sub> HPO <sub>4</sub> , 0.05 mg Sodium azide.
Preservative:	Sodium azide
Precaution of Use:	This product contains Sodium azide: a POISONOUS AND HAZARDOUS SUBSTANCE which should be handled by trained staff only.
Handling Advice:	Avoid repeated freezing and thawing.
Storage:	4 °C/-20 °C
Storage Comment:	At -20°C for one year. After reconstitution, at 4°C for one month. It can also be aliquotted and stored frozen at -20 °C for a longer time. Avoid repeated freezing and thawing.

## Images



### Immunohistochemistry

**Image 1.** CXCL13/BLC was detected in paraffin-embedded sections of mouse lymphaden tissues using rabbit anti-CXCL13/BLC Antigen Affinity purified polyclonal antibody (Catalog # ) at 1 ??g/mL. The immunohistochemical section was developed using SABC method (Catalog # SA1022).



### Western Blotting

**Image 2.** Western blot analysis of CXCL13/BLC expression in recombinant mouse CXCL13/BLC protein 1ng ( Lane 1). CXCL13/BLC at 13KD was detected using rabbit anti-CXCL13/BLC Antigen Affinity purified polyclonal antibody (Catalog # ) at 0.5 µg/mL. The blot was developed using chemiluminescence (ECL) method (Catalog # EK1002).