

Datasheet for ABIN4886561  
**anti-DDAH2 antibody (C-Term)**

## 3 Images

[Go to Product page](#)

## Overview

Quantity:	100 µg
Target:	DDAH2
Binding Specificity:	AA 190-224, C-Term
Reactivity:	Human, Mouse, Rat
Host:	Rabbit
Clonality:	Polyclonal
Application:	Western Blotting (WB), Immunohistochemistry (Paraffin-embedded Sections) (IHC (p))

## Product Details

Purpose:	Rabbit IgG polyclonal antibody for N(G),N(G)-dimethylarginine dimethylaminohydrolase 2 (DDAH2) detection. Tested with WB, IHC-P in Human, Mouse, Rat.
Immunogen:	A synthetic peptide corresponding to a sequence at the C-terminus of human DDAH2 (190-224aa DAAQKAVRAMAVLTDHPYASLTLPDDAAADCLFLR), different from the related mouse and rat sequences by three amino acids.
Sequence:	DAAQKAVRAM AVLTDHPYAS LTLPPDAAAD CLFLR
Isotype:	IgG
Cross-Reactivity (Details):	No cross reactivity with other proteins.
Characteristics:	Rabbit IgG polyclonal antibody for N(G),N(G)-dimethylarginine dimethylaminohydrolase 2 (DDAH2) detection. Tested with WB, IHC-P in Human, Mouse, Rat. Gene Name: dimethylarginine dimethylaminohydrolase 2 Protein Name: N(G),N(G)-dimethylarginine dimethylaminohydrolase 2

## Product Details

Purification: Immunogen affinity purified.

## Target Details

Target: DDAH2

Alternative Name: DDAH2 ([DDAH2 Products](#))

Background: DDAH2 is known as dimethylarginine dimethylaminohydrolase 2 which is mapped to 6p21.3 by radiation hybrid and FISH analysis. This gene encodes a dimethylarginine dimethylaminohydrolase. DDAH2 functions in nitric oxide generation by regulating the cellular concentrations of methylarginines, which in turn inhibit nitric oxide synthase activity. The protein may be localized to the mitochondria. Alternative splicing resulting in multiple transcript variants.

Synonyms: DDAH | DDAH II | DDAHII | DDAH2 | DDAH-2 | DDAH 2 | Dimethylargininase 2 | Dimethylargininase-2 | G6a | NG30 | Protein G6a | S phase protein | S-phase protein | O95865

Gene ID: 23564

UniProt: [O95865](#)

## Application Details

Application Notes: WB: Concentration: 0.1-0.5 µg/mL, Tested Species: Human, Mouse, Rat  
IHC-P: Concentration: 0.5-1 µg/mL, Tested Species: Human, Epitope Retrieval by Heat: Boiling the paraffin sections in 10 mM citrate buffer, pH 6.0, for 20 mins is required for the staining of formalin/paraffin sections.  
Notes: Tested Species: Species with positive results. Other applications have not been tested. Optimal dilutions should be determined by end users.

Comment: Antibody can be supported by chemiluminescence kit ABIN921124 in WB, supported by ABIN921231 in IHC(P).

Restrictions: For Research Use only

## Handling

Format: Lyophilized

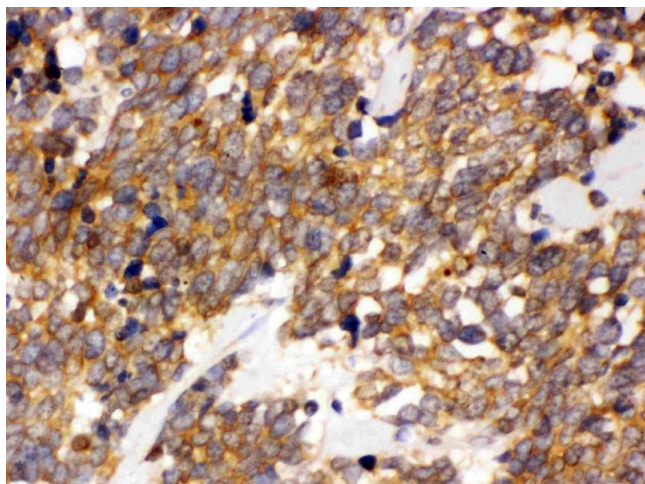
Reconstitution: Add 0.2 mL of distilled water will yield a concentration of 500 µg/mL.

Concentration: 500 µg/mL

## Handling

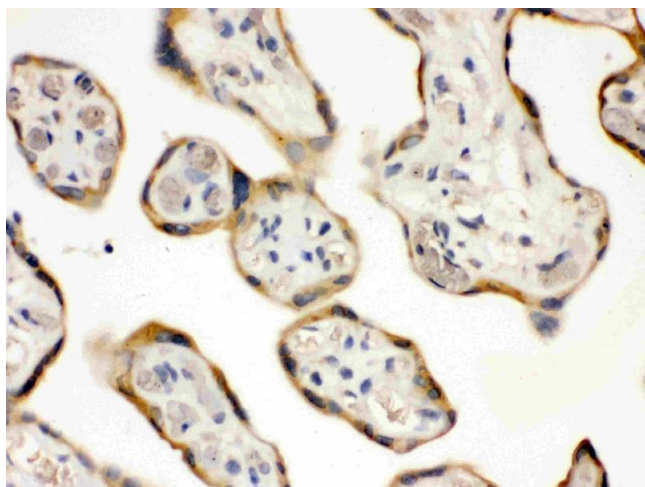
Buffer:	Each vial contains 5 mg BSA, 0.9 mg NaCl, 0.2 mg Na <sub>2</sub> HPO <sub>4</sub> , 0.05 mg Sodium azide.
Preservative:	Sodium azide
Precaution of Use:	This product contains Sodium azide: a POISONOUS AND HAZARDOUS SUBSTANCE which should be handled by trained staff only.
Handling Advice:	Avoid repeated freezing and thawing.
Storage:	4 °C/-20 °C
Storage Comment:	At -20°C for one year. After reconstitution, at 4°C for one month. It can also be aliquotted and stored frozen at -20 °C for a longer time. Avoid repeated freezing and thawing.

## Images



### Immunohistochemistry

**Image 1.** DDAH2 was detected in paraffin-embedded sections of human lung cancer tissues using rabbit anti-DDAH2 Antigen Affinity purified polyclonal antibody (Catalog # ) at 1 µg/mL. The immunohistochemical section was developed using SABC method (Catalog # SA1022).



### Immunohistochemistry

**Image 2.** DDAH2 was detected in paraffin-embedded sections of human placenta tissues using rabbit anti-DDAH2 Antigen Affinity purified polyclonal antibody (Catalog # ) at 1 µg/mL. The immunohistochemical section was developed using SABC method (Catalog # SA1022).



Western Blotting

**Image 3.** Western blot analysis of DDAH2 expression in rat lung extract ( Lane 1), mouse lung extract ( Lane 2) and human placenta extract ( Lane 3). DDAH2 at 27KD was detected using rabbit anti- DDAH2 Antigen Affinity purified polyclonal antibody (Catalog # ) at 0.5 µg/mL. The blot was developed using chemiluminescence (ECL) method (Catalog # EK1002).