

Datasheet for ABIN4886568
anti-ELANE antibody (AA 27-265)

3 Images

[Go to Product page](#)

Overview

Quantity:	100 µg
Target:	ELANE
Binding Specificity:	AA 27-265
Reactivity:	Mouse, Rat
Host:	Rabbit
Clonality:	Polyclonal
Application:	Western Blotting (WB), Immunohistochemistry (Paraffin-embedded Sections) (IHC (p))

Product Details

Purpose:	Rabbit IgG polyclonal antibody for Neutrophil elastase(ELANE) detection. Tested with WB, IHC-P in Mouse,Rat.
Immunogen:	E. coli-derived mouse Elastase/ELANE/ELA2 recombinant protein (Position: S27-N265). Mouse Elastase/ELANE/ELA2 shares 92% amino acid (aa) sequence identity with rat Elastase/ELANE/ELA2.
Isotype:	IgG
Cross-Reactivity (Details):	No cross reactivity with other proteins.
Characteristics:	<p>Rabbit IgG polyclonal antibody for Neutrophil elastase(ELANE) detection. Tested with WB, IHC-P in Mouse,Rat.</p> <p>Gene Name: elastase, neutrophil expressed</p> <p>Protein Name: Neutrophil elastase</p>
Purification:	Immunogen affinity purified.

Target Details

Target:	ELANE
Alternative Name:	ELANE (ELANE Products)
Background:	<p>Neutrophil elastase is a serine protease of neutrophil and monocyte granules. Its key physiologic role is in innate host defense, but it can also participate in tissue remodeling and possesses secretagogue actions important to local inflammatory responses. Elastases form a subfamily of serine proteases that hydrolyze many proteins in addition to elastin. Humans have six elastase genes which encode structurally similar proteins. The encoded preproprotein is proteolytically processed to generate the active protease. Following activation, this protease hydrolyzes proteins within specialized neutrophil lysosomes, called azurophil granules, as well as proteins of the extracellular matrix. This protein also degrades the outer membrane protein A (OmpA) of E. coli as well as the virulence factors of such bacteria as Shigella, Salmonella and Yersinia. Mutations in this gene are associated with cyclic neutropenia and severe congenital neutropenia (SCN). This gene is present in a gene cluster on chromosome 19.</p> <p>Synonyms: ELA2 ELANE Elastase 2 Elastase-2 HLE HNE Leukocyte elastase Medullasin Neutrophil elastase PMN E PMN elastase SCN1 P08246</p>
Gene ID:	50701

Application Details

Application Notes:	<p>WB: Concentration: 0.1-0.5 µg/mL, Tested Species: Mouse</p> <p>IHC-P: Concentration: 0.5-1 µg/mL, Tested Species: Mouse, Rat, Epitope Retrieval by Heat: Boiling the paraffin sections in 10 mM citrate buffer, pH 6.0, for 20 mins is required for the staining of formalin/paraffin sections.</p> <p>Notes: Tested Species: Species with positive results. Other applications have not been tested. Optimal dilutions should be determined by end users.</p>
Comment:	Antibody can be supported by chemiluminescence kit ABIN921124 in WB, supported by ABIN921231 in IHC(P).
Restrictions:	For Research Use only

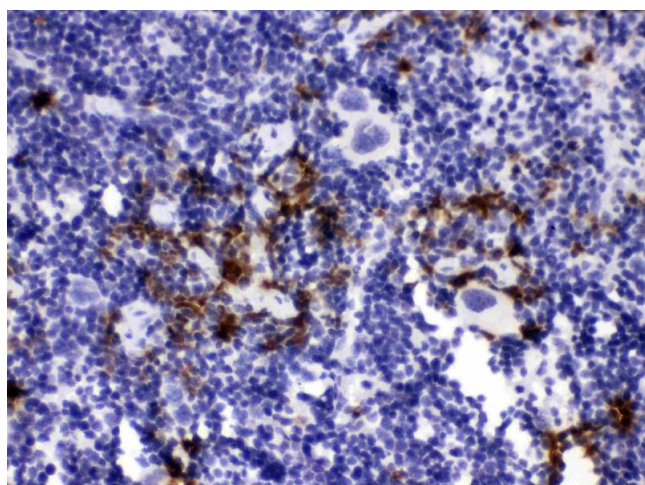
Handling

Format:	Lyophilized
Reconstitution:	Add 0.2 mL of distilled water will yield a concentration of 500 µg/mL.

Handling

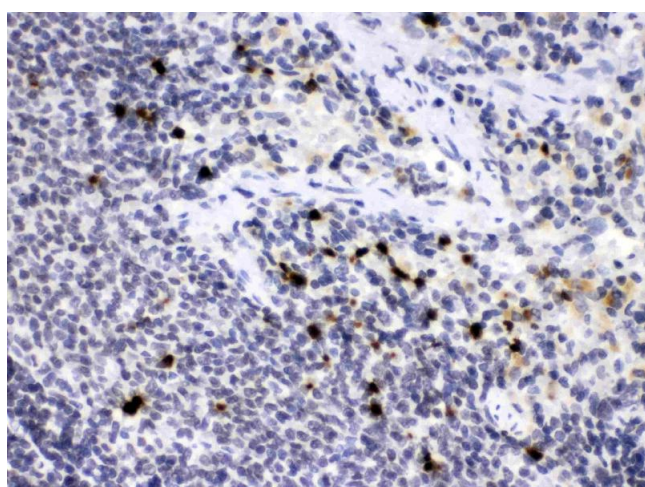
Concentration:	500 µg/mL
Buffer:	Each vial contains 5 mg BSA, 0.9 mg NaCl, 0.2 mg Na ₂ HPO ₄ , 0.05 mg Sodium azide.
Preservative:	Sodium azide
Precaution of Use:	This product contains Sodium azide: a POISONOUS AND HAZARDOUS SUBSTANCE which should be handled by trained staff only.
Handling Advice:	Avoid repeated freezing and thawing.
Storage:	4 °C/-20 °C
Storage Comment:	At -20°C for one year. After reconstitution, at 4°C for one month. It can also be aliquotted and stored frozen at -20 °C for a longer time. Avoid repeated freezing and thawing.

Images



Immunohistochemistry

Image 1. Elastase/ELANE/ELA2 was detected in paraffin-embedded sections of mouse spleen tissues using rabbit anti- Elastase/ELANE/ELA2 Antigen Affinity purified polyclonal antibody (Catalog #) at 1 µg/mL. The immunohistochemical section was developed using SABC method (Catalog # SA1022).



Immunohistochemistry

Image 2. Elastase/ELANE/ELA2 was detected in paraffin-embedded sections of rat spleen tissues using rabbit anti- Elastase/ELANE/ELA2 Antigen Affinity purified polyclonal antibody (Catalog #) at 1 µg/mL. The immunohistochemical section was developed using SABC method (Catalog # SA1022).



Western Blotting

Image 3. Western blot analysis of Elastase/ELANE/ELA2 expression in mouse bone extract (Lane 1) and mouse spleen extract (Lane 2). Elastase/ELANE/ELA2 at 29KD was detected using rabbit anti- Elastase/ELANE/ELA2 Antigen Affinity purified polyclonal antibody (Catalog #) at 0.5 µg/mL. The blot was developed using chemiluminescence (ECL) method (Catalog # EK1002).