



Datasheet for ABIN4886590 anti-FHL3 antibody (N-Term)



[Go to Product page](#)

1 Image

Overview

Quantity:	100 µg
Target:	FHL3
Binding Specificity:	AA 41-84, N-Term
Reactivity:	Human, Rat
Host:	Rabbit
Clonality:	Polyclonal
Application:	Western Blotting (WB)

Product Details

Purpose:	Rabbit IgG polyclonal antibody for Four and a half LIM domains protein 3(FHL3) detection. Tested with WB in Human,Rat.
Immunogen:	A synthetic peptide corresponding to a sequence at the N-terminus of human FHL3 (41-84aa AECQQLIGHDSRELFYEDRHFHEGCFRCCRCQRSLADEPFTCQD), identical to the related mouse sequence.
Sequence:	AECQQLIGHD SRELFYEDRH FHEGCFRCCR CQRSLADEPF TCQD
Isotype:	IgG
Cross-Reactivity (Details):	No cross reactivity with other proteins.
Characteristics:	Rabbit IgG polyclonal antibody for Four and a half LIM domains protein 3(FHL3) detection. Tested with WB in Human,Rat. Gene Name: four and a half LIM domains 3 Protein Name: Four and a half LIM domains protein 3

Product Details

Purification: Immunogen affinity purified.

Target Details

Target: FHL3

Alternative Name: FHL3 ([FHL3 Products](#))

Background: Four and a half LIM domains protein 3 is a protein that in humans is encoded by the FHL3 gene. The protein encoded by this gene is a member of a family of proteins containing a four-and-a-half LIM domain, which is a highly conserved double zinc finger motif. The encoded protein has been shown to interact with the cancer developmental regulators SMAD2, SMAD3, and SMAD4, the skeletal muscle myogenesis protein MyoD, and the high-affinity IgE beta chain regulator MZF-1. This protein may be involved in tumor suppression, repression of MyoD expression, and repression of IgE receptor expression. Two transcript variants encoding different isoforms have been found for this gene.

Synonyms: FHL3 | FHL-3 | FHL 3 | SLIM-2 | SLIM 2 | SLIM2 | Q13643

Gene ID: 2275

UniProt: [Q13643](#)

Application Details

Application Notes: WB: Concentration: 0.1-0.5 µg/mL, Tested Species: Human, Rat
Notes: Tested Species: Species with positive results.
Other applications have not been tested. Optimal dilutions should be determined by end users.

Comment: Antibody can be supported by chemiluminescence kit ABIN921124 in WB.

Restrictions: For Research Use only

Handling

Format: Lyophilized

Reconstitution: Add 0.2 mL of distilled water will yield a concentration of 500 µg/mL.

Concentration: 500 µg/mL

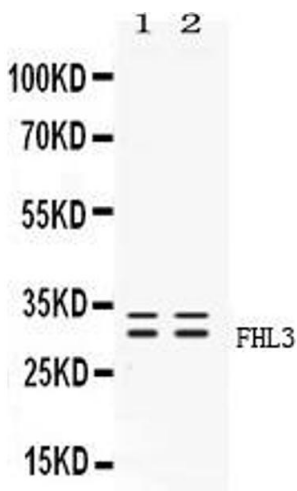
Buffer: Each vial contains 5 mg BSA, 0.9 mg NaCl, 0.2 mg Na₂HPO₄, 0.05 mg Sodium azide.

Preservative: Sodium azide

Handling

Precaution of Use:	This product contains Sodium azide: a POISONOUS AND HAZARDOUS SUBSTANCE which should be handled by trained staff only.
Handling Advice:	Avoid repeated freezing and thawing.
Storage:	4 °C/-20 °C
Storage Comment:	At -20°C for one year. After reconstitution, at 4°C for one month. It can also be aliquotted and stored frozen at -20 °C for a longer time. Avoid repeated freezing and thawing.

Images



Western Blotting

Image 1. Western blot analysis of FHL3 expression in rat testis extract (Lane 1) and PANC-1 whole cell lysates (Lane 2). FHL3 at 31KD was detected using rabbit anti- FHL3 Antigen Affinity purified polyclonal antibody (Catalog #) at 0.5 ??g/mL. The blot was developed using chemiluminescence (ECL) method (Catalog # EK1002).