

Datasheet for ABIN4886613  
**anti-HDGF antibody (C-Term)**

## 5 Images

[Go to Product page](#)

## Overview

Quantity:	100 µg
Target:	HDGF
Binding Specificity:	AA 61-97, C-Term
Reactivity:	Human, Mouse, Rat
Host:	Rabbit
Clonality:	Polyclonal
Application:	Western Blotting (WB), Immunohistochemistry (Paraffin-embedded Sections) (IHC (p))

## Product Details

Purpose:	Rabbit IgG polyclonal antibody for Hepatoma-derived growth factor(HDGF) detection. Tested with WB, IHC-P in Human,Mouse,Rat.
Immunogen:	A synthetic peptide corresponding to a sequence at the C-terminus of human HDGF (61-97aa KDLFPYEESKEKFGKPNKRKGFSEGLWEIENNPTVKA), identical to the related mouse and rat sequences.
Sequence:	KDLFPYEESK EKFGKPNKRK GFSEGLWEIE NNPTVKA
Isotype:	IgG
Cross-Reactivity (Details):	No cross reactivity with other proteins.
Characteristics:	<p>Rabbit IgG polyclonal antibody for Hepatoma-derived growth factor(HDGF) detection. Tested with WB, IHC-P in Human,Mouse,Rat.</p> <p>Gene Name: hepatoma-derived growth factor</p> <p>Protein Name: Hepatoma-derived growth factor</p>

## Product Details

Purification: Immunogen affinity purified.

## Target Details

Target: HDGF

Alternative Name: HDGF ([HDGF Products](#))

Background: Hepatoma-derived growth factor (HDGF), also known as high mobility group protein 1-like 2 (HMG-1L2), is a protein that in humans is encoded by the HDGF gene. This gene encodes a member of the hepatoma-derived growth factor family. The encoded protein has mitogenic and DNA-binding activity and may play a role in cellular proliferation and differentiation. High levels of expression of this gene enhance the growth of many tumors. And this gene was thought initially to be located on chromosome X, however, that location has been determined to correspond to a related pseudogene. Alternatively spliced transcript variants encoding distinct isoforms have been described.

Synonyms: HDGF | HMG-1L2 | HMG1L2 | P51858

Gene ID: 3068

UniProt: [P51858](#)

Pathways: [ER-Nucleus Signaling](#)

## Application Details

Application Notes: WB: Concentration: 0.1-0.5 µg/mL, Tested Species: Human, Rat  
IHC-P: Concentration: 0.5-1 µg/mL, Tested Species: Human, Mouse, Rat, Epitope Retrieval by Heat: Boiling the paraffin sections in 10 mM citrate buffer, pH 6.0, for 20 mins is required for the staining of formalin/paraffin sections.  
Notes: Tested Species: Species with positive results. Other applications have not been tested.  
Optimal dilutions should be determined by end users.

Comment: Antibody can be supported by chemiluminescence kit ABIN921124 in WB, supported by ABIN921231 in IHC(P).

Restrictions: For Research Use only

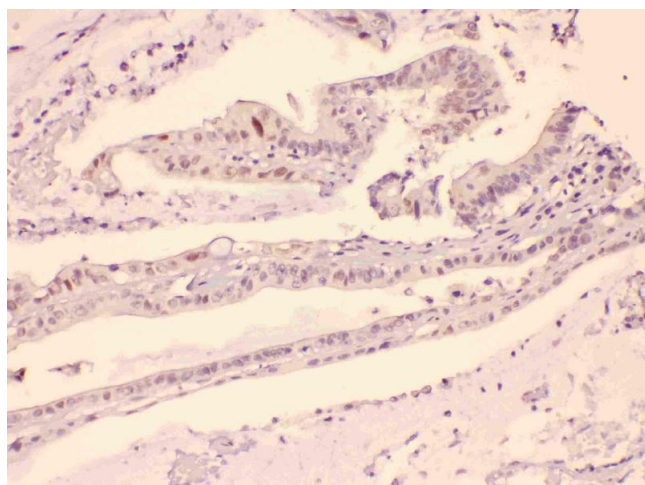
## Handling

Format: Lyophilized

## Handling

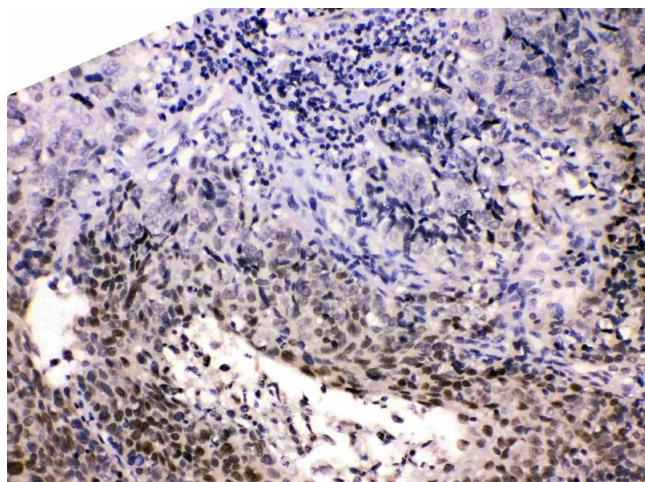
Reconstitution:	Add 0.2 mL of distilled water will yield a concentration of 500 µg/mL.
Concentration:	500 µg/mL
Buffer:	Each vial contains 5 mg BSA, 0.9 mg NaCl, 0.2 mg Na <sub>2</sub> HPO <sub>4</sub> , 0.05 mg Sodium azide.
Preservative:	Sodium azide
Precaution of Use:	This product contains Sodium azide: a POISONOUS AND HAZARDOUS SUBSTANCE which should be handled by trained staff only.
Handling Advice:	Avoid repeated freezing and thawing.
Storage:	4 °C/-20 °C
Storage Comment:	At -20°C for one year. After reconstitution, at 4°C for one month. It can also be aliquotted and stored frozen at -20 °C for a longer time. Avoid repeated freezing and thawing.

## Images



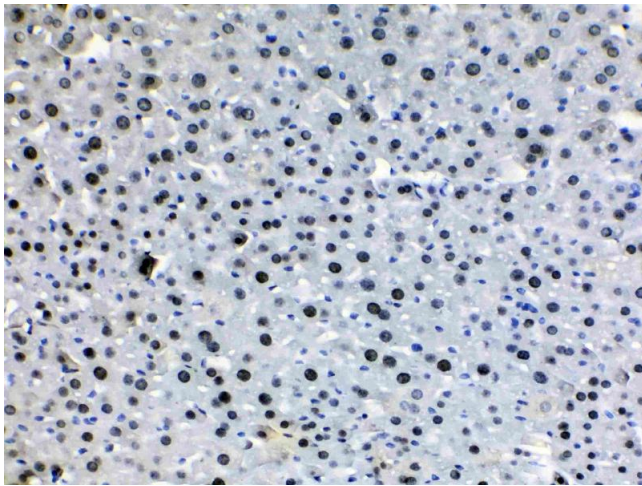
### Immunohistochemistry

**Image 1.** HDGF was detected in paraffin-embedded sections of human intestinal cancer tissues using rabbit anti- HDGF Antigen Affinity purified polyclonal antibody (Catalog # ) at 1 µg/mL. The immunohistochemical section was developed using SABC method (Catalog # SA1022).



### Immunohistochemistry

**Image 2.** HDGF was detected in paraffin-embedded sections of human lung cancer tissues using rabbit anti- HDGF Antigen Affinity purified polyclonal antibody (Catalog # ) at 1 µg/mL. The immunohistochemical section was developed using SABC method (Catalog # SA1022).



#### Immunohistochemistry

**Image 3.** HDGF was detected in paraffin-embedded sections of mouse liver tissues using rabbit anti- HDGF Antigen Affinity purified polyclonal antibody (Catalog # ) at 1 µg/mL. The immunohistochemical section was developed using SABC method (Catalog # SA1022).

Please check the [product details page](#) for more images. Overall 5 images are available for ABIN4886613.