



Datasheet for ABIN4886618
anti-HLA-DPB1 antibody (AA 30-258)



[Go to Product page](#)

1 Image

1 Publication

Overview

Quantity:	100 µg
Target:	HLA-DPB1
Binding Specificity:	AA 30-258
Reactivity:	Human, Mouse, Rat
Host:	Rabbit
Clonality:	Polyclonal
Application:	Western Blotting (WB)

Product Details

Purpose:	Rabbit IgG polyclonal antibody for HLA class II histocompatibility antigen, DP beta 1 chain (HLA-DPB1) detection. Tested with WB in Human,Mouse,Rat.
Immunogen:	E. coli-derived human HLA-DPB1 recombinant protein (Position: R30-A258).
Isotype:	IgG
Cross-Reactivity (Details):	No cross reactivity with other proteins.
Characteristics:	Rabbit IgG polyclonal antibody for HLA class II histocompatibility antigen, DP beta 1 chain (HLA-DPB1) detection. Tested with WB in Human,Mouse,Rat. Gene Name: major histocompatibility complex, class II, DP beta 1 Protein Name: HLA class II histocompatibility antigen, DP beta 1 chain
Purification:	Immunogen affinity purified.

Target Details

Target:	HLA-DPB1
Alternative Name:	HLA-DPB1 (HLA-DPB1 Products)
Background:	<p>HLA class II histocompatibility antigen, DP(W2) beta chain is a protein that in humans is encoded by the HLA-DPB1 gene. HLA-DPB belongs to the HLA class II beta chain paralogues. This class II molecule is a heterodimer consisting of an alpha (DPA) and a beta chain (DPB), both anchored in the membrane. It plays a central role in the immune system by presenting peptides derived from extracellular proteins. Class II molecules are expressed in antigen presenting cells (APC: B lymphocytes, dendritic cells, macrophages). The beta chain is approximately 26-28 kDa and its gene contains 6 exons. Exon one encodes the leader peptide, exons 2 and 3 encode the two extracellular domains, exon 4 encodes the transmembrane domain and exon 5 encodes the cytoplasmic tail. Within the DP molecule both the alpha chain and the beta chain contain the polymorphisms specifying the peptide binding specificities, resulting in up to 4 different molecules.</p> <p>Synonyms: DPB1 HLA-DP HLA-DP1B HLA-DPB P04440</p>
Gene ID:	3115
UniProt:	P04440
Pathways:	TCR Signaling , Cancer Immune Checkpoints , Human Leukocyte Antigen (HLA) in Adaptive Immune Response

Application Details

Application Notes:	<p>WB: Concentration: 0.1-0.5 µg/mL, Tested Species: Human, Mouse, Rat</p> <p>Notes: Tested Species: Species with positive results.</p> <p>Other applications have not been tested. Optimal dilutions should be determined by end users.</p>
Comment:	Antibody can be supported by chemiluminescence kit ABIN921124 in WB.
Restrictions:	For Research Use only

Handling

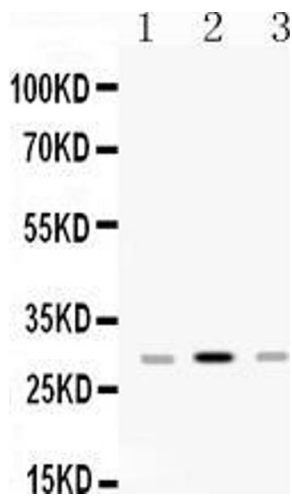
Format:	Lyophilized
Reconstitution:	Add 0.2 mL of distilled water will yield a concentration of 500 µg/mL.
Concentration:	500 µg/mL

Handling

Buffer:	Each vial contains 5 mg BSA, 0.9 mg NaCl, 0.2 mg Na ₂ HPO ₄ , 0.05 mg Sodium azide.
Preservative:	Sodium azide
Precaution of Use:	This product contains Sodium azide: a POISONOUS AND HAZARDOUS SUBSTANCE which should be handled by trained staff only.
Handling Advice:	Avoid repeated freezing and thawing.
Storage:	4 °C/-20 °C
Storage Comment:	At -20°C for one year. After reconstitution, at 4°C for one month. It can also be aliquotted and stored frozen at -20 °C for a longer time. Avoid repeated freezing and thawing.

Publications

Product cited in:	<p>Qu, Zhang, Du, Wang, Yang, Guo, Wang, Zhang, Xu: "Pim-3 is a Critical Risk Factor in Development and Prognosis of Prostate Cancer." in: Medical science monitor : international medical journal of experimental and clinical research, Vol. 22, pp. 4254-4260, (2017) (PubMed).</p> <p>Zhu, Liu, Wang, Nie, He, Zhang, Liu, Su: "Lentiviral-mediated growth-associated protein-43 modification of bone marrow mesenchymal stem cells improves traumatic optic neuropathy in rats." in: Molecular medicine reports, Vol. 12, Issue 4, pp. 5691-700, (2016) (PubMed).</p> <p>Cao, Li, Li, Xiong, Zhou, Fan, Yu, Mao: "The potential role of HMGB1 release in peritoneal dialysis-related peritonitis." in: PLoS ONE, Vol. 8, Issue 1, pp. e54647, (2013) (PubMed).</p>
-------------------	--



Western Blotting

Image 1. Western blot analysis of HLA-DPB1 expression in rat spleen extract (Lane 1), mouse spleen extract (Lane 2) and JURKAT whole cell lysates (Lane 3). HLA-DPB1 at 29KD was detected using rabbit anti- HLA-DPB1 Antigen Affinity purified polyclonal antibody (Catalog #) at 0.5 $\mu\text{g}/\text{mL}$. The blot was developed using chemiluminescence (ECL) method (Catalog # EK1002).