

Datasheet for ABIN4886658
anti-LDHB antibody (AA 237-334)

4 Images

[Go to Product page](#)

Overview

Quantity:	100 µg
Target:	LDHB
Binding Specificity:	AA 237-334
Reactivity:	Human, Rat, Mouse
Host:	Rabbit
Clonality:	Polyclonal
Application:	Western Blotting (WB), Immunohistochemistry (Paraffin-embedded Sections) (IHC (p))

Product Details

Purpose:	Rabbit IgG polyclonal antibody for L-lactate dehydrogenase B chain(LDHB) detection. Tested with WB, IHC-P in Human,Mouse,Rat.
Immunogen:	E. coli-derived human LDHB recombinant protein (Position: E237-L334). Human LDHB shares 98% amino acid (aa) sequence identity with both mouse and rat LDHB.
Isotype:	IgG
Cross-Reactivity (Details):	No cross reactivity with other proteins.
Characteristics:	<p>Rabbit IgG polyclonal antibody for L-lactate dehydrogenase B chain(LDHB) detection. Tested with WB, IHC-P in Human,Mouse,Rat.</p> <p>Gene Name: lactate dehydrogenase B</p> <p>Protein Name: L-lactate dehydrogenase B chain</p>
Purification:	Immunogen affinity purified.

Target Details

Target:	LDHB
Alternative Name:	LDHB (LDHB Products)
Background:	<p>The LDHB gene encodes the B subunit of lactate dehydrogenase enzyme, which catalyzes the interconversion of pyruvate and lactate with concomitant interconversion of NADH and NAD⁺ in a post-glycolysis process. Alternatively spliced transcript variants have been found for this gene. Recent studies have shown that a C-terminally extended isoform is produced by use of an alternative in-frame translation termination codon via a stop codon readthrough mechanism, and that this isoform is localized in the peroxisomes. Mutations in this gene are associated with lactate dehydrogenase B deficiency. Pseudogenes have been identified on chromosomes X, 5 and 13.</p> <p>Synonyms: HEL S 281 LDHB LDH-B LDH B LDHH LDH-H LDH H LDHBD TRG-5 TRG5 P07195</p>
Gene ID:	3945
UniProt:	P07195
Pathways:	Warburg Effect

Application Details

Application Notes:	<p>WB: Concentration: 0.1-0.5 µg/mL, Tested Species: Human, Mouse, Rat</p> <p>IHC-P: Concentration: 0.5-1 µg/mL, Tested Species: Human, Mouse, Rat, Epitope Retrieval by Heat: Boiling the paraffin sections in 10 mM citrate buffer, pH 6.0, for 20 mins is required for the staining of formalin/paraffin sections.</p> <p>Notes: Tested Species: Species with positive results. Other applications have not been tested. Optimal dilutions should be determined by end users.</p>
Comment:	Antibody can be supported by chemiluminescence kit ABIN921124 in WB, supported by ABIN921231 in IHC(P).
Restrictions:	For Research Use only

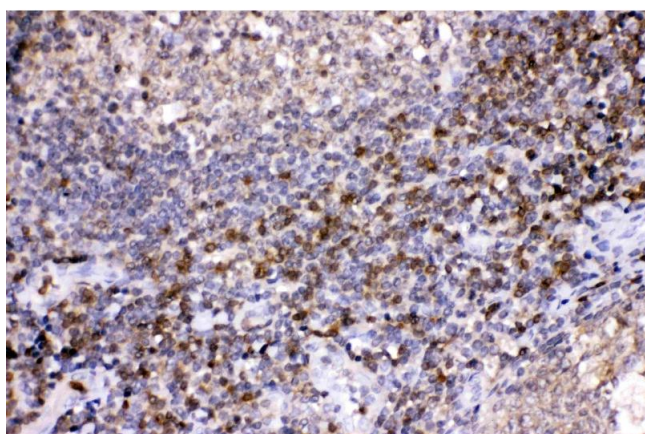
Handling

Format:	Lyophilized
Reconstitution:	Add 0.2 mL of distilled water will yield a concentration of 500 µg/mL.
Concentration:	500 µg/mL

Handling

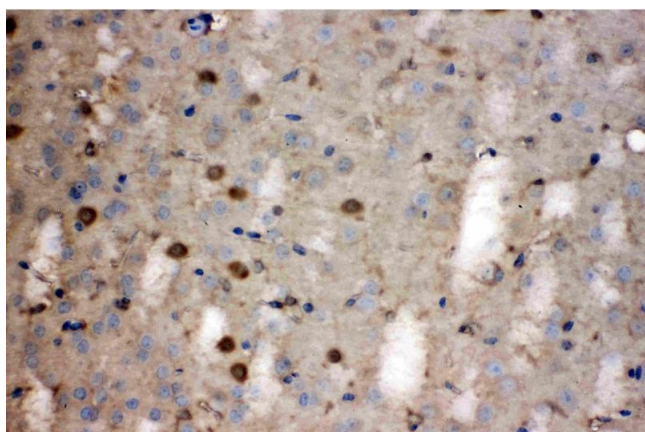
Buffer:	Each vial contains 5 mg BSA, 0.9 mg NaCl, 0.2 mg Na ₂ HPO ₄ , 0.05 mg Sodium azide.
Preservative:	Sodium azide
Precaution of Use:	This product contains Sodium azide: a POISONOUS AND HAZARDOUS SUBSTANCE which should be handled by trained staff only.
Handling Advice:	Avoid repeated freezing and thawing.
Storage:	4 °C/-20 °C
Storage Comment:	At -20°C for one year. After reconstitution, at 4°C for one month. It can also be aliquotted and stored frozen at -20 °C for a longer time. Avoid repeated freezing and thawing.

Images



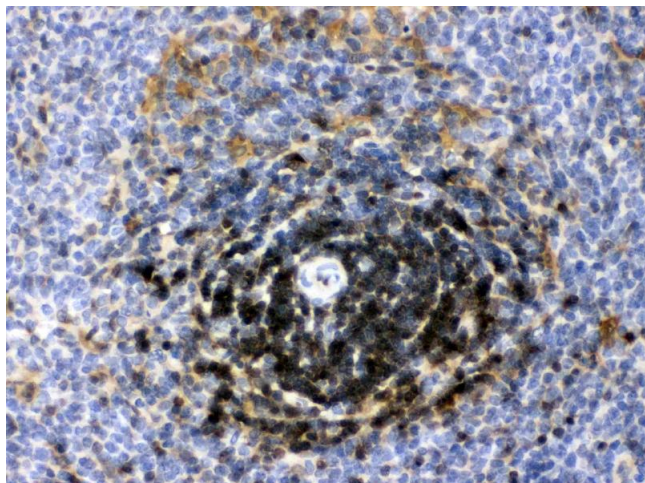
Immunohistochemistry

Image 1. LDHB was detected in paraffin-embedded sections of human tonsil tissues using rabbit anti- LDHB Antigen Affinity purified polyclonal antibody (Catalog #) at 1 µg/mL. The immunohistochemical section was developed using SABC method (Catalog # SA1022).



Immunohistochemistry

Image 2. LDHB was detected in paraffin-embedded sections of mouse brain tissues using rabbit anti- LDHB Antigen Affinity purified polyclonal antibody (Catalog #) at 1 µg/mL. The immunohistochemical section was developed using SABC method (Catalog # SA1022).



Immunohistochemistry

Image 3. LDHB was detected in paraffin-embedded sections of rat spleen tissues using rabbit anti- LDHB Antigen Affinity purified polyclonal antibody (Catalog #) at 1 ??g/mL. The immunohistochemical section was developed using SABC method (Catalog # SA1022).

Please check the [product details page](#) for more images. Overall 4 images are available for ABIN4886658.