

Datasheet for ABIN4886677
anti-NAMPT antibody (AA 62-337)

4 Images

[Go to Product page](#)

Overview

Quantity:	100 µg
Target:	NAMPT
Binding Specificity:	AA 62-337
Reactivity:	Human, Rat, Mouse
Host:	Rabbit
Clonality:	Polyclonal
Application:	Western Blotting (WB), ELISA, Immunohistochemistry (Paraffin-embedded Sections) (IHC (p))

Product Details

Purpose:	Rabbit IgG polyclonal antibody for Nicotinamide phosphoribosyltransferase(NAMPT) detection. Tested with WB, IHC-P, ELISA in Human,Mouse,Rat.
Immunogen:	E. coli-derived human Visfatin recombinant protein (Position: L62-N337). Human Visfatin shares 97.1% and 96.7% amino acid (aa) sequence identity with mouse and rat Visfatin, respectively.
Isotype:	IgG
Cross-Reactivity (Details):	No cross reactivity with other proteins.
Characteristics:	Rabbit IgG polyclonal antibody for Nicotinamide phosphoribosyltransferase(NAMPT) detection. Tested with WB, IHC-P, ELISA in Human,Mouse,Rat. Gene Name: nicotinamide phosphoribosyltransferase Protein Name: Nicotinamide phosphoribosyltransferase
Purification:	Immunogen affinity purified.

Target Details

Target:	NAMPT
Alternative Name:	NAMPT (NAMPT Products)
Background:	<p>Nicotinamide phosphoribosyltransferase (NAMPTase or Nampt), also known as pre-B-cell colony-enhancing factor 1 (PBEF1) or visfatin, is an enzyme that in humans is encoded by the PBEF1 gene. This gene encodes a protein that catalyzes the condensation of nicotinamide with 5-phosphoribosyl-1-pyrophosphate to yield nicotinamide mononucleotide, one step in the biosynthesis of nicotinamide adenine dinucleotide. The protein belongs to the nicotinic acid phosphoribosyltransferase (NAPRTase) family and is thought to be involved in many important biological processes, including metabolism, stress response and aging. This gene has a pseudogene on chromosome 10.</p> <p>Synonyms: NAMPTase Nampt PBEF 1 PBEF1 PBEF VF Visfatin P43490</p>
Gene ID:	10135
UniProt:	P43490

Application Details

Application Notes:	<p>WB: Concentration: 0.1-0.5 µg/mL, Tested Species: Human, Mouse, Rat</p> <p>IHC-P: Concentration: 0.5-1 µg/mL, Tested Species: Human, Mouse, Rat, Epitope Retrieval by Heat: Boiling the paraffin sections in 10 mM citrate buffer, pH 6.0, for 20 mins is required for the staining of formalin/paraffin sections.</p> <p>ELISA: Concentration: 0.1-0.5 µg/mL, Tested Species: Human</p> <p>Notes: Tested Species: Species with positive results. Other applications have not been tested. Optimal dilutions should be determined by end users.</p>
Comment:	Antibody can be supported by chemiluminescence kit ABIN921124 in WB, supported by ABIN921231 in IHC(P).
Restrictions:	For Research Use only

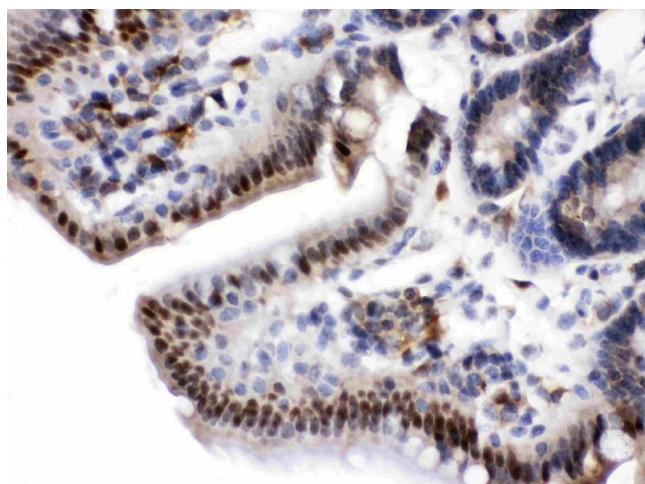
Handling

Format:	Lyophilized
Reconstitution:	Add 0.2 mL of distilled water will yield a concentration of 500 µg/mL.
Concentration:	500 µg/mL

Handling

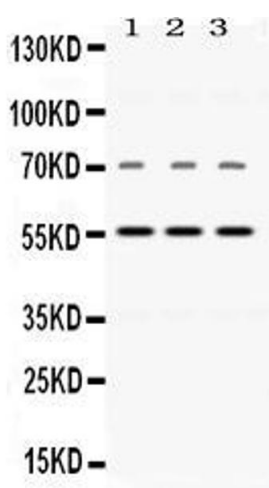
Buffer:	Each vial contains 5 mg BSA, 0.9 mg NaCl, 0.2 mg Na ₂ HPO ₄ , 0.05 mg Sodium azide.
Preservative:	Sodium azide
Precaution of Use:	This product contains Sodium azide: a POISONOUS AND HAZARDOUS SUBSTANCE which should be handled by trained staff only.
Handling Advice:	Avoid repeated freezing and thawing.
Storage:	4 °C/-20 °C
Storage Comment:	At -20°C for one year. After reconstitution, at 4°C for one month. It can also be aliquotted and stored frozen at -20 °C for a longer time. Avoid repeated freezing and thawing.

Images



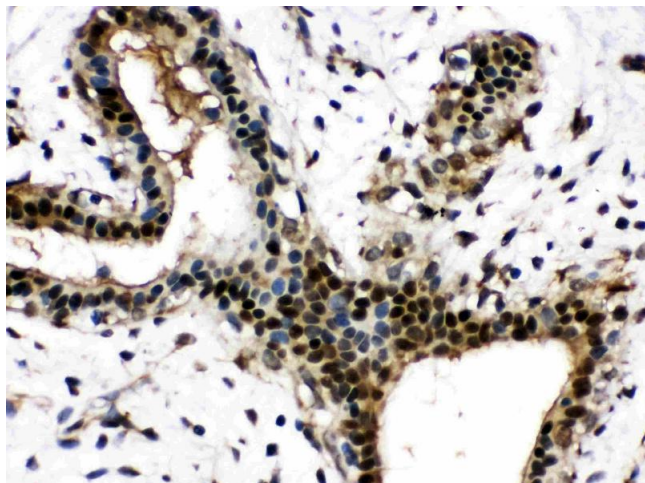
Immunohistochemistry

Image 1. Visfatin was detected in paraffin-embedded sections of rat intestine tissues using rabbit anti- Visfatin Antigen Affinity purified polyclonal antibody (Catalog #) at 1 µg/mL. The immunohistochemical section was developed using SABC method (Catalog # SA1022).



Western Blotting

Image 2. Western blot analysis of Visfatin expression in rat brain extract (Lane 1), mouse cardiac muscle extract (Lane 2), and human placenta extract (Lane 3). Visfatin at 56KD was detected using rabbit anti-Visfatin Antigen Affinity purified polyclonal antibody (Catalog #) at 0.5 µg/mL. The blot was developed using chemiluminescence (ECL) method (Catalog # EK1002).



Immunohistochemistry

Image 3. Visfatin was detected in paraffin-embedded sections of human mammary cancer tissues using rabbit anti- Visfatin Antigen Affinity purified polyclonal antibody (Catalog #) at 1 µg/mL. The immunohistochemical section was developed using SABC method (Catalog # SA1022).

Please check the [product details page](#) for more images. Overall 4 images are available for ABIN4886677.