

Datasheet for ABIN4886679  
**anti-NEDD8 antibody (Middle Region)**[Go to Product page](#)

## 2 Images

## Overview

|                      |  |
|----------------------|--|
| Quantity:            | 100 µg   |
| Target:              | NEDD8  |
| Binding Specificity: | AA 20-60, Middle Region  |
| Reactivity:          | Human, Mouse, Rat  |
| Host:                | Rabbit   |
| Clonality:           | Polyclonal   |
| Application:         | Western Blotting (WB), Immunohistochemistry (Paraffin-embedded Sections) (IHC (p)) |

## Product Details

|                             |  |
|-----------------------------|--|
| Purpose:                    | Rabbit IgG polyclonal antibody for NEDD8(NEDD8) detection. Tested with WB, IHC-P in Human,Mouse,Rat.   |
| Immunogen:                  | A synthetic peptide corresponding to a sequence in the middle region of human NEDD8 (20-60aa TDKVERIKERVEEKEGIPPQQQLIYSGKQMNDEKTAADYK), identical to the related mouse and rat sequences.                                  |
| Sequence:                   | TDKVERIKER VEEKEGIPPQ QQRLIYSGKQ MNDEKTAADY K  |
| Isotype:                    | IgG  |
| Cross-Reactivity (Details): | No cross reactivity with other proteins.   |
| Characteristics:            | <p>Rabbit IgG polyclonal antibody for NEDD8(NEDD8) detection. Tested with WB, IHC-P in Human,Mouse,Rat.</p> <p>Gene Name: neural precursor cell expressed, developmentally down-regulated 8</p> <p>Protein Name: NEDD8</p> |

## Product Details

Purification: Immunogen affinity purified.

## Target Details

Target: NEDD8

Alternative Name: NEDD8 ([NEDD8 Products](#))

Background: NEDD8 is a protein that in humans is encoded by the NEDD8 gene. Human NEDD8 shares 60 % amino acid sequence identity to ubiquitin. The most substrates of NEDD8 modification are the Cullin subunits of Cullin-based E3 ubiquitin ligases, which are active only when neddylated. Their NEDDylation is critical for the recruitment of E2 to the ligase complex, thus facilitating ubiquitin conjugation. NEDD8 modification has therefore been implicated in cell cycle progression and cytoskeletal regulation.

Synonyms: NED8 | NEDD 8 | NEDD-8 | Nedd8 | Neddylin | Rub1 | Q15843

Gene ID: 4738

UniProt: [Q15843](#)

Pathways: [Ubiquitin Proteasome Pathway](#)

## Application Details

Application Notes: WB: Concentration: 0.1-0.5 µg/mL, Tested Species: Human, Mouse, Rat  
IHC-P: Concentration: 0.5-1 µg/mL, Tested Species: Human, Epitope Retrieval by Heat: Boiling the paraffin sections in 10 mM citrate buffer, pH 6.0, for 20 mins is required for the staining of formalin/paraffin sections.  
Notes: Tested Species: Species with positive results. Other applications have not been tested. Optimal dilutions should be determined by end users.

Comment: Antibody can be supported by chemiluminescence kit ABIN921124 in WB, supported by ABIN921231 in IHC(P).

Restrictions: For Research Use only

## Handling

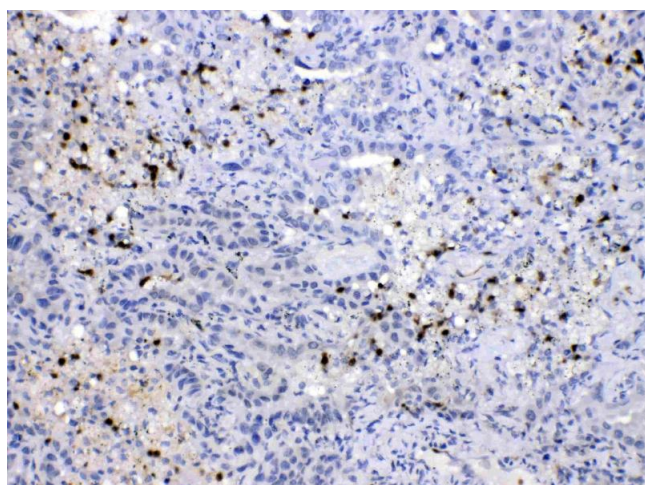
Format: Lyophilized

Reconstitution: Add 0.2 mL of distilled water will yield a concentration of 500 µg/mL.

## Handling

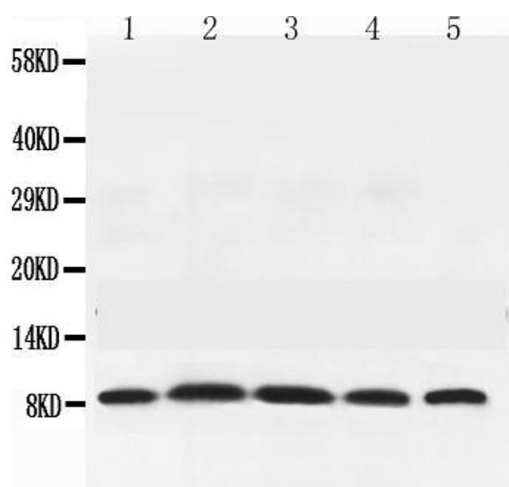
|                    |   |
|--------------------|---|
| Concentration:     | 500 µg/mL   |
| Buffer:            | Each vial contains 5 mg BSA, 0.9 mg NaCl, 0.2 mg Na <sub>2</sub> HPO <sub>4</sub> , 0.05 mg Sodium azide.   |
| Preservative:      | Sodium azide  |
| Precaution of Use: | This product contains Sodium azide: a POISONOUS AND HAZARDOUS SUBSTANCE which should be handled by trained staff only.  |
| Handling Advice:   | Avoid repeated freezing and thawing.  |
| Storage:           | 4 °C/-20 °C   |
| Storage Comment:   | At -20°C for one year. After reconstitution, at 4°C for one month.<br>It can also be aliquotted and stored frozen at -20 °C for a longer time. Avoid repeated freezing and thawing. |

## Images



### Immunohistochemistry

**Image 1.** NEDD8 was detected in paraffin-embedded sections of human lung cancer tissues using rabbit anti-NEDD8 Antigen Affinity purified polyclonal antibody (Catalog # ) at 1 µg/mL. The immunohistochemical section was developed using SABC method (Catalog # SA1022).



### Western Blotting

**Image 2.** Western blot analysis of NEDD8 expression in rat testis extract ( Lane 1), mouse thymus extract ( Lane 2), mouse brain extract ( Lane 3), HELA whole cell lysates ( Lane 4) and MCF-7 whole cell lysates ( Lane 5). NEDD8 at 9KD was detected using rabbit anti- NEDD8 Antigen Affinity purified polyclonal antibody (Catalog #) at 0.5 µg/mL. The blot was developed using chemiluminescence (ECL) method (Catalog # EK1002).