

Datasheet for ABIN4886697  
**anti-ADRP antibody (AA 226-418)**

## 4 Images

[Go to Product page](#)

## Overview

|                      |  |
|----------------------|--|
| Quantity:            | 100 µg   |
| Target:              | ADRP (PLIN2)   |
| Binding Specificity: | AA 226-418   |
| Reactivity:          | Human, Mouse, Rat  |
| Host:                | Rabbit   |
| Clonality:           | Polyclonal   |
| Application:         | Western Blotting (WB), Immunohistochemistry (Paraffin-embedded Sections) (IHC (p)) |

## Product Details

|                             |   |
|-----------------------------|---|
| Purpose:                    | Rabbit IgG polyclonal antibody for Perilipin-2(PLIN2) detection. Tested with WB, IHC-P in Human, Mouse, Rat.  |
| Immunogen:                  | E. coli-derived human ADFP recombinant protein (Position: K226-Q418). Human ADFP shares 88.4% amino acid (aa) sequence identity with mouse ADFP.                    |
| Isotype:                    | IgG   |
| Cross-Reactivity (Details): | No cross reactivity with other proteins.  |
| Characteristics:            | Rabbit IgG polyclonal antibody for Perilipin-2(PLIN2) detection. Tested with WB, IHC-P in Human, Mouse, Rat.<br>Gene Name: perilipin 2<br>Protein Name: Perilipin-2 |
| Purification:               | Immunogen affinity purified.  |

## Target Details

|                   |  |
|-------------------|--|
| Target:           | ADRP (PLIN2)   |
| Alternative Name: | PLIN2 ( <a href="#">PLIN2 Products</a> )   |
| Background:       | <p>Adipose differentiation-related protein, also known as perilipin 2 (PLIN2), ADRP or adipophilin, is a protein which in humans is encoded by the ADFP gene. The protein encoded by this gene belongs to the perilipin family, members of which coat intracellular lipid storage droplets. This protein is associated with the lipid globule surface membrane material, and maybe involved in development and maintenance of adipose tissue. However, it is not restricted to adipocytes as previously thought, but is found in a wide range of cultured cell lines, including fibroblasts, endothelial and epithelial cells, and tissues, such as lactating mammary gland, adrenal cortex, Sertoli and Leydig cells, and hepatocytes in alcoholic liver cirrhosis, suggesting that it may serve as a marker of lipid accumulation in diverse cell types and diseases. Alternatively spliced transcript variants have been found for this gene.</p> <p>Synonyms: ADFP   Adipophilin   ADRP   Perilipin-2   PLIN2   Q99541</p> |
| Gene ID:          | 123  |
| UniProt:          | <a href="#">Q99541</a>   |
| Pathways:         | <a href="#">Regulation of Lipid Metabolism by PPARalpha</a> , <a href="#">Lipid Metabolism</a>   |

## Application Details

|                    |  |
|--------------------|--|
| Application Notes: | <p>WB: Concentration: 0.1-0.5 µg/mL, Tested Species: Human</p> <p>IHC-P: Concentration: 0.5-1 µg/mL, Tested Species: Human, Mouse, Rat, Epitope Retrieval by Heat: Boiling the paraffin sections in 10 mM citrate buffer, pH 6.0, for 20 mins is required for the staining of formalin/paraffin sections.</p> <p>Notes: Tested Species: Species with positive results. Other applications have not been tested. Optimal dilutions should be determined by end users.</p> |
| Comment:           | Antibody can be supported by chemiluminescence kit ABIN921124 in WB, supported by ABIN921231 in IHC(P).  |
| Restrictions:      | For Research Use only  |

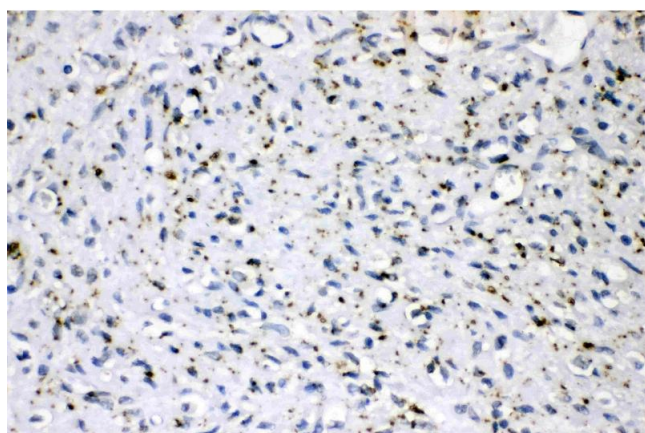
## Handling

|                 |  |
|-----------------|--|
| Format:         | Lyophilized  |
| Reconstitution: | Add 0.2 mL of distilled water will yield a concentration of 500 µg/mL. |

## Handling

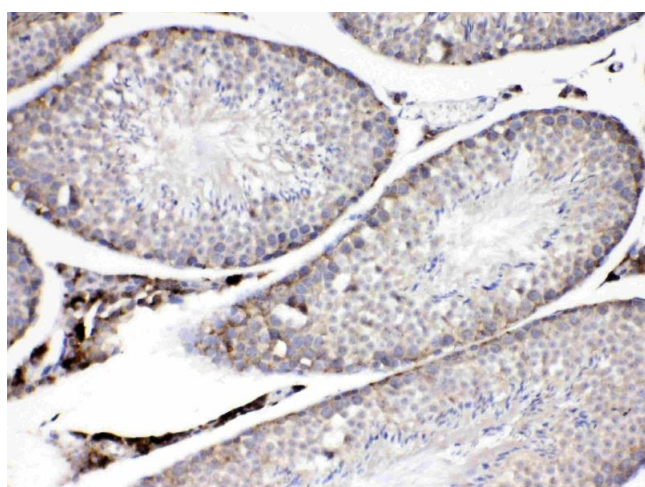
|                    |   |
|--------------------|---|
| Concentration:     | 500 µg/mL   |
| Buffer:            | Each vial contains 5 mg BSA, 0.9 mg NaCl, 0.2 mg Na <sub>2</sub> HPO <sub>4</sub> , 0.05 mg Sodium azide.   |
| Preservative:      | Sodium azide  |
| Precaution of Use: | This product contains Sodium azide: a POISONOUS AND HAZARDOUS SUBSTANCE which should be handled by trained staff only.  |
| Handling Advice:   | Avoid repeated freezing and thawing.  |
| Storage:           | 4 °C/-20 °C   |
| Storage Comment:   | At -20°C for one year. After reconstitution, at 4°C for one month.<br>It can also be aliquotted and stored frozen at -20 °C for a longer time. Avoid repeated freezing and thawing. |

## Images



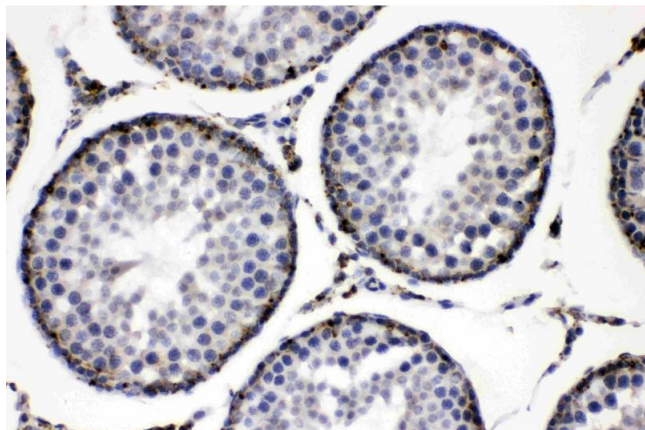
### Immunohistochemistry

**Image 1.** ADFP was detected in paraffin-embedded sections of human mammary cancer tissues using rabbit anti- ADFP Antigen Affinity purified polyclonal antibody (Catalog # ) at 1 µg/mL. The immunohistochemical section was developed using SABC method (Catalog # SA1022).



### Immunohistochemistry

**Image 2.** ADFP was detected in paraffin-embedded sections of mouse testis tissues using rabbit anti- ADFP Antigen Affinity purified polyclonal antibody (Catalog # ) at 1 µg/mL. The immunohistochemical section was developed using SABC method (Catalog # SA1022).



#### Immunohistochemistry

**Image 3.** ADFP was detected in paraffin-embedded sections of rat testis tissues using rabbit anti- ADFP Antigen Affinity purified polyclonal antibody (Catalog # ) at 1 µg/mL. The immunohistochemical section was developed using SABC method (Catalog # SA1022).

Please check the [product details page](#) for more images. Overall 4 images are available for ABIN4886697.