

Datasheet for ABIN4886706  
**anti-PSMA3 antibody (Middle Region)**



[Go to Product page](#)

4 Images

## Overview

Quantity:	100 µg
Target:	PSMA3
Binding Specificity:	AA 88-127, Middle Region
Reactivity:	Human, Mouse, Rat
Host:	Rabbit
Clonality:	Polyclonal
Conjugate:	This PSMA3 antibody is un-conjugated
Application:	Western Blotting (WB), Immunohistochemistry (Paraffin-embedded Sections) (IHC (p))

## Product Details

Purpose:	Rabbit IgG polyclonal antibody for Proteasome subunit alpha type-3(PSMA3) detection. Tested with WB, IHC-P in Human,Mouse,Rat.
Immunogen:	A synthetic peptide corresponding to a sequence in the middle region of human PSMA3 (88-127aa LADIAREEASNFRSNGFYNIPLKHLADRVAMYVHAYTLYS), identical to the related mouse and rat sequences.
Sequence:	LADIAREEAS NFRSNGFYNI PLKHLADRV MYVHAYTLYS
Isotype:	IgG
Cross-Reactivity (Details):	No cross reactivity with other proteins.
Characteristics:	Rabbit IgG polyclonal antibody for Proteasome subunit alpha type-3(PSMA3) detection. Tested with WB, IHC-P in Human,Mouse,Rat.  Gene Name: proteasome subunit alpha 3

## Product Details

Protein Name: Proteasome subunit alpha type-3

Purification: Immunogen affinity purified.

## Target Details

Target: PSMA3

Alternative Name: PSMA3 ([PSMA3 Products](#))

Background: Proteasome subunit alpha type-3, also known as macropain subunit C8 and proteasome component C8, is a protein that in humans is encoded by the PSMA3 gene. The proteasome is a multicatalytic proteinase complex with a highly ordered ring-shaped 20S core structure. The core structure is composed of 4 rings of 28 non-identical subunits, 2 rings are composed of 7 alpha subunits and 2 rings are composed of 7 beta subunits. Proteasomes are distributed throughout eukaryotic cells at a high concentration and cleave peptides in an ATP/ubiquitin-dependent process in a non-lysosomal pathway. An essential function of a modified proteasome, the immunoproteasome, is the processing of class I MHC peptides. This gene encodes a member of the peptidase T1A family, that is a 20S core alpha subunit. Two alternative transcripts encoding different isoforms have been identified.

Synonyms: HC8 | Macropain subunit C8 | PSC8 | psmA3 | P25788

Gene ID: 5684

UniProt: [P25788](#)

Pathways: [Mitotic G1-G1/S Phases](#), [DNA Replication](#), [Synthesis of DNA](#)

## Application Details

Application Notes: WB: Concentration: 0.1-0.5 µg/mL, Tested Species: Human, Mouse, Rat  
IHC-P: Concentration: 0.5-1 µg/mL, Tested Species: Human, Mouse, Rat, Epitope Retrieval by Heat: Boiling the paraffin sections in 10 mM citrate buffer, pH 6.0, for 20 mins is required for the staining of formalin/paraffin sections.  
Notes: Tested Species: Species with positive results. Other applications have not been tested.  
Optimal dilutions should be determined by end users.

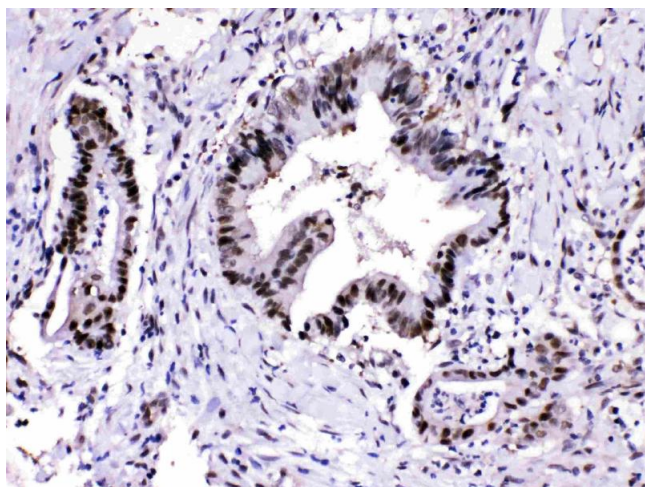
Comment: Antibody can be supported by chemiluminescence kit ABIN921124 in WB, supported by ABIN921231 in IHC(P).

Restrictions: For Research Use only

## Handling

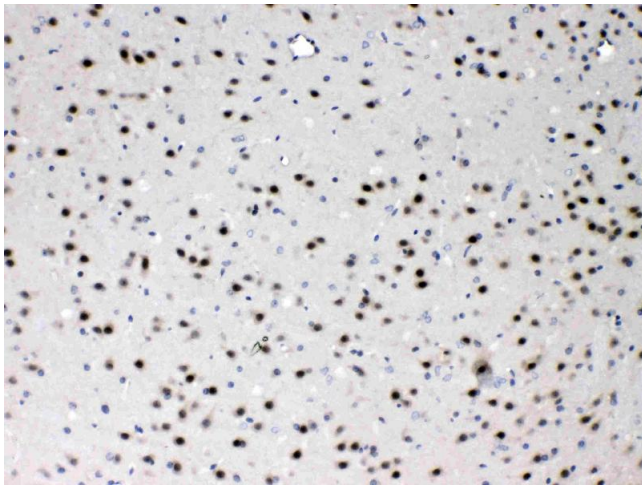
Format:	Lyophilized
Reconstitution:	Add 0.2 mL of distilled water will yield a concentration of 500 µg/mL.
Concentration:	500 µg/mL
Buffer:	Each vial contains 5 mg BSA, 0.9 mg NaCl, 0.2 mg Na <sub>2</sub> HPO <sub>4</sub> , 0.05 mg Sodium azide.
Preservative:	Sodium azide
Precaution of Use:	This product contains Sodium azide: a POISONOUS AND HAZARDOUS SUBSTANCE which should be handled by trained staff only.
Handling Advice:	Avoid repeated freezing and thawing.
Storage:	4 °C/-20 °C
Storage Comment:	At -20°C for one year. After reconstitution, at 4°C for one month. It can also be aliquotted and stored frozen at -20 °C for a longer time. Avoid repeated freezing and thawing.

## Images



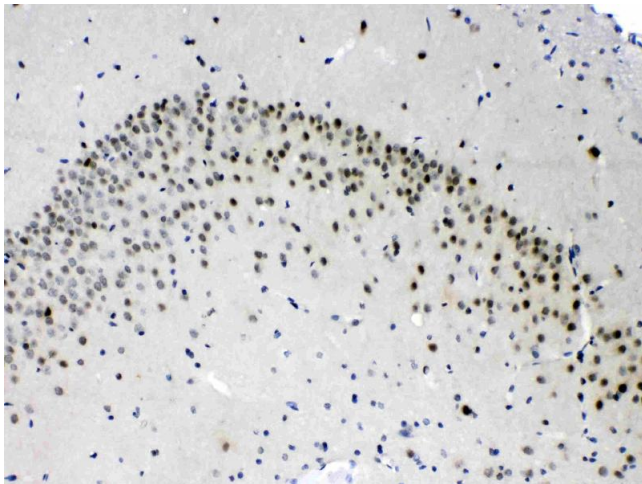
### Immunohistochemistry

**Image 1.** PSMA3 was detected in paraffin-embedded sections of human intestinal cancer tissues using rabbit anti- PSMA3 Antigen Affinity purified polyclonal antibody (Catalog # ) at 1 µg/mL. The immunohistochemical section was developed using SABC method (Catalog # SA1022).



#### Immunohistochemistry

**Image 2.** PSMA3 was detected in paraffin-embedded sections of mouse brain tissues using rabbit anti- PSMA3 Antigen Affinity purified polyclonal antibody (Catalog # ) at 1 µg/mL. The immunohistochemical section was developed using SABC method (Catalog # SA1022).



#### Immunohistochemistry

**Image 3.** PSMA3 was detected in paraffin-embedded sections of rat brain tissues using rabbit anti- PSMA3 Antigen Affinity purified polyclonal antibody (Catalog # ) at 1 µg/mL. The immunohistochemical section was developed using SABC method (Catalog # SA1022).

Please check the [product details page](#) for more images. Overall 4 images are available for ABIN4886706.