

Datasheet for ABIN4886707

**anti-PSMA4 antibody (Middle Region)**[Go to Product page](#)**1** Image

## Overview

Quantity:	100 µg
Target:	PSMA4
Binding Specificity:	AA 84-123, Middle Region
Reactivity:	Human, Mouse, Rat
Host:	Rabbit
Clonality:	Polyclonal
Conjugate:	This PSMA4 antibody is un-conjugated
Application:	Western Blotting (WB)

## Product Details

Purpose:	Rabbit IgG polyclonal antibody for Proteasome subunit alpha type-4(PSMA4) detection. Tested with WB in Human,Mouse,Rat.
Immunogen:	A synthetic peptide corresponding to a sequence in the middle region of human PSMA4 (84-123aa NVLTNELLRLIAQRYLLQYQEPIPCQLVTALCDIKQAYTQ), identical to the related mouse and rat sequences.
Sequence:	NVLTNELLRLI AQRYLLQYQE PIPCEQLVTA LCDIKQAYTQ
Isotype:	IgG
Cross-Reactivity (Details):	No cross reactivity with other proteins.
Characteristics:	Rabbit IgG polyclonal antibody for Proteasome subunit alpha type-4(PSMA4) detection. Tested with WB in Human,Mouse,Rat.  Gene Name: proteasome subunit alpha 4

## Product Details

	Protein Name: Proteasome subunit alpha type-4
Purification:	Immunogen affinity purified.

## Target Details

Target:	PSMA4
Alternative Name:	PSMA4 ( <a href="#">PSMA4 Products</a> )
Background:	<p>Proteasome subunit alpha type-4, also known as macropain subunit C9, proteasome component C9, and 20S proteasome subunit alpha-3, is a protein that in humans is encoded by the PSMA4 gene. The proteasome is a multicatalytic proteinase complex with a highly ordered ring-shaped 20S core structure. The core structure is composed of 4 rings of 28 non-identical subunits, 2 rings are composed of 7 alpha subunits and 2 rings are composed of 7 beta subunits. Proteasomes are distributed throughout eukaryotic cells at a high concentration and cleave peptides in an ATP/ubiquitin-dependent process in a non-lysosomal pathway. An essential function of a modified proteasome, the immunoproteasome, is the processing of class I MHC peptides. This gene encodes a member of the peptidase T1A family, that is a 20S core alpha subunit. Three alternatively spliced transcript variants encoding different isoforms have been found for this gene.</p> <p>Synonyms: HC9   Macropain subunit C9   PSC9   PSMA 4   psmA4   P25789</p>
Gene ID:	5685
UniProt:	<a href="#">P25789</a>
Pathways:	<a href="#">Mitotic G1-G1/S Phases</a> , <a href="#">DNA Replication</a> , <a href="#">Synthesis of DNA</a>

## Application Details

Application Notes:	<p>WB: Concentration: 0.1-0.5 µg/mL, Tested Species: Human, Mouse, Rat</p> <p>Notes: Tested Species: Species with positive results.</p> <p>Other applications have not been tested. Optimal dilutions should be determined by end users.</p>
Comment:	Antibody can be supported by chemiluminescence kit ABIN921124 in WB.
Restrictions:	For Research Use only

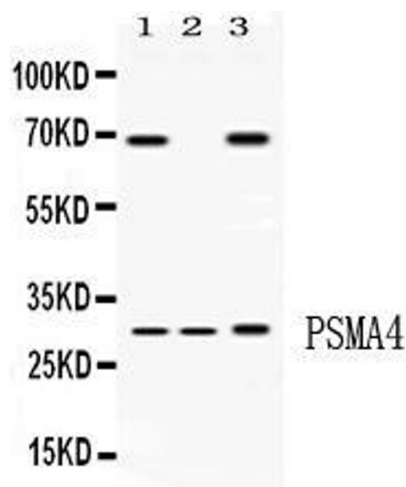
## Handling

Format:	Lyophilized
---------	-------------

## Handling

Reconstitution:	Add 0.2 mL of distilled water will yield a concentration of 500 µg/mL.
Concentration:	500 µg/mL
Buffer:	Each vial contains 5 mg BSA, 0.9 mg NaCl, 0.2 mg Na2HPO4, 0.05 mg Sodium azide.
Preservative:	Sodium azide
Precaution of Use:	This product contains Sodium azide: a POISONOUS AND HAZARDOUS SUBSTANCE which should be handled by trained staff only.
Handling Advice:	Avoid repeated freezing and thawing.
Storage:	4 °C/-20 °C
Storage Comment:	At -20°C for one year. After reconstitution, at 4°C for one month. It can also be aliquotted and stored frozen at -20 °C for a longer time. Avoid repeated freezing and thawing.

## Images



### Western Blotting

**Image 1.** Western blot analysis of PSMA4 expression in rat liver extract ( Lane 1), mouse spleen extract ( Lane 2) and HELA whole cell lysates ( Lane 3). PSMA4 at 29KD was detected using rabbit anti- PSMA4 Antigen Affinity purified polyclonal antibody (Catalog # ) at 0.5 µg/mL. The blot was developed using chemiluminescence (ECL) method (Catalog # EK1002).