

Datasheet for ABIN4886714
anti-RPS27 antibody (AA 2-84)

4 Images

[Go to Product page](#)

Overview

Quantity:	100 µg
Target:	RPS27
Binding Specificity:	AA 2-84
Reactivity:	Human, Rat, Mouse
Host:	Rabbit
Clonality:	Polyclonal
Application:	Western Blotting (WB), Immunohistochemistry (Paraffin-embedded Sections) (IHC (p))

Product Details

Purpose:	Rabbit IgG polyclonal antibody for 40S ribosomal protein S27(RPS27) detection. Tested with WB, IHC-P in Human,Mouse,Rat.
Immunogen:	E. coli-derived human MPS1 recombinant protein (Position: P2-H84). Human MPS1 shares 100% amino acid (aa) sequence identity with both mouse and rat MPS1.
Isotype:	IgG
Cross-Reactivity (Details):	No cross reactivity with other proteins.
Characteristics:	<p>Rabbit IgG polyclonal antibody for 40S ribosomal protein S27(RPS27) detection. Tested with WB, IHC-P in Human,Mouse,Rat.</p> <p>Gene Name: ribosomal protein S27</p> <p>Protein Name: 40S ribosomal protein S27</p>
Purification:	Immunogen affinity purified.

Target Details

Target:	RPS27
Alternative Name:	RPS27 (RPS27 Products)
Background:	<p>40S ribosomal protein S27, also known as metallopan-stimulin 1 or MPS-1, is a protein that in humans is encoded by the RPS27 gene. Ribosomes, the organelles that catalyze protein synthesis, consist of a small 40S subunit and a large 60S subunit. Together these subunits are composed of 4 RNA species and approximately 80 structurally distinct proteins. This gene encodes a ribosomal protein that is a component of the 40S subunit. The protein belongs to the S27E family of ribosomal proteins. It contains a C4-type zinc finger domain that can bind to zinc. The encoded protein has been shown to be able to bind to nucleic acid. It is located in the cytoplasm as a ribosomal component, but it has also been detected in the nucleus. Studies in rat indicate that ribosomal protein S27 is located near ribosomal protein S18 in the 40S subunit and is covalently linked to translation initiation factor eIF3. As is typical for genes encoding ribosomal proteins, there are multiple processed pseudogenes of this gene dispersed through the genome.</p> <p>Synonyms: Metallopan stimulin 1 Metallopan-stimulin 1 Metallopanstimulin 1 Metallopanstimulin1 MPS-1 MPS1 MPS 1 pmn rps27 S27 P42677</p>
Gene ID:	6232
UniProt:	P42677

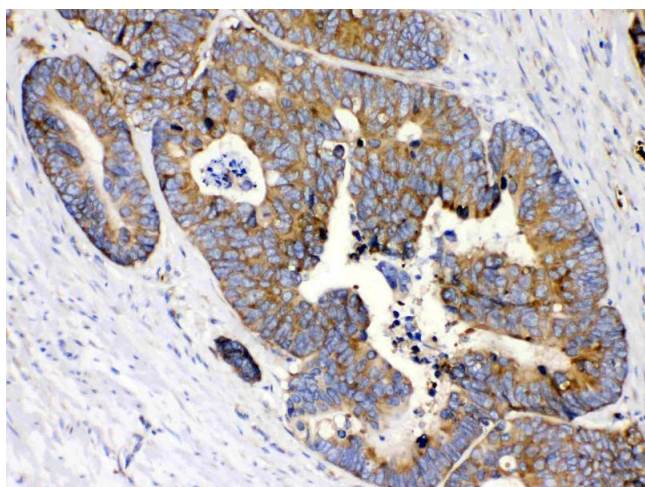
Application Details

Application Notes:	<p>WB: Concentration: 0.1-0.5 µg/mL, Tested Species: Human, Mouse, Rat</p> <p>IHC-P: Concentration: 0.5-1 µg/mL, Tested Species: Human, Mouse, Rat, Epitope Retrieval by Heat: Boiling the paraffin sections in 10 mM citrate buffer, pH 6.0, for 20 mins is required for the staining of formalin/paraffin sections.</p> <p>Notes: Tested Species: Species with positive results. Other applications have not been tested. Optimal dilutions should be determined by end users.</p>
Comment:	Antibody can be supported by chemiluminescence kit ABIN921124 in WB, supported by ABIN921231 in IHC(P).
Restrictions:	For Research Use only
Handling	
Format:	Lyophilized

Handling

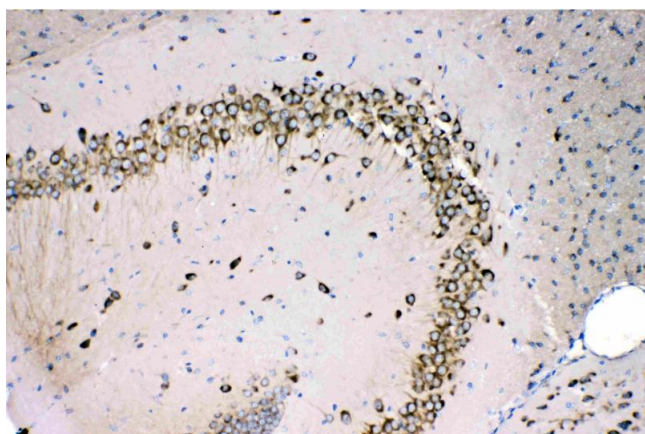
Reconstitution:	Add 0.2 mL of distilled water will yield a concentration of 500 µg/mL.
Concentration:	500 µg/mL
Buffer:	Each vial contains 5 mg BSA, 0.9 mg NaCl, 0.2 mg Na ₂ HPO ₄ , 0.05 mg Sodium azide.
Preservative:	Sodium azide
Precaution of Use:	This product contains Sodium azide: a POISONOUS AND HAZARDOUS SUBSTANCE which should be handled by trained staff only.
Handling Advice:	Avoid repeated freezing and thawing.
Storage:	4 °C/-20 °C
Storage Comment:	At -20°C for one year. After reconstitution, at 4°C for one month. It can also be aliquotted and stored frozen at -20 °C for a longer time. Avoid repeated freezing and thawing.

Images



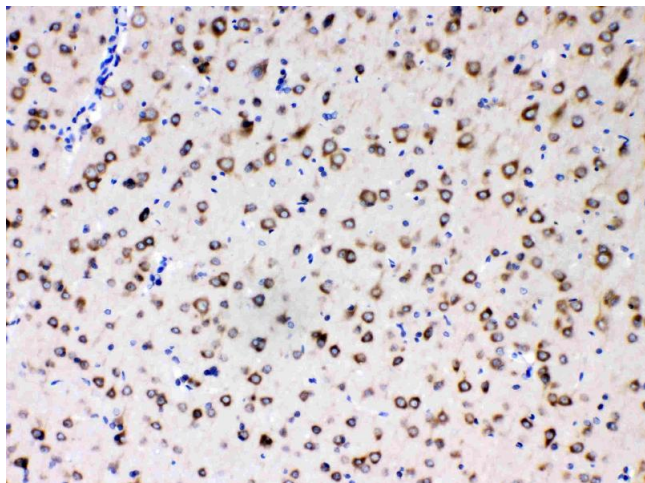
Immunohistochemistry

Image 1. MPS1 was detected in paraffin-embedded sections of human intestinal cancer tissues using rabbit anti- MPS1 Antigen Affinity purified polyclonal antibody (Catalog #) at 1 µg/mL. The immunohistochemical section was developed using SABC method (Catalog # SA1022).



Immunohistochemistry

Image 2. MPS1 was detected in paraffin-embedded sections of mouse brain tissues using rabbit anti- MPS1 Antigen Affinity purified polyclonal antibody (Catalog #) at 1 µg/mL. The immunohistochemical section was developed using SABC method (Catalog # SA1022).



Immunohistochemistry

Image 3. MPS1 was detected in paraffin-embedded sections of rat brain tissues using rabbit anti- MPS1 Antigen Affinity purified polyclonal antibody (Catalog #) at 1 µg/mL. The immunohistochemical section was developed using SABC method (Catalog # SA1022).

Please check the [product details page](#) for more images. Overall 4 images are available for ABIN4886714.