

Datasheet for ABIN4886727

## anti-SLC2A5 antibody (Middle Region)



[Go to Product page](#)

3 Images

1 Publication

### Overview

Quantity:	100 µg
Target:	SLC2A5
Binding Specificity:	AA 223-259, Middle Region
Reactivity:	Human, Rat
Host:	Rabbit
Clonality:	Polyclonal
Application:	Western Blotting (WB), Immunohistochemistry (Paraffin-embedded Sections) (IHC (p))

### Product Details

Purpose:	Rabbit IgG polyclonal antibody for Solute carrier family 2, facilitated glucose transporter member 5(SLC2A5) detection. Tested with WB, IHC-P in Human,Rat.
Immunogen:	A synthetic peptide corresponding to a sequence in the middle region of human SLC2A5 (223-259aa QKKDEAAAKKALQTLRGWDSVDREVAEIRQEDEAEKA), different from the related mouse and rat sequences by nine amino acids.
Sequence:	QKKDEAAAKK ALQTLRGWDS VDREVAEIRQ EDEAEKA
Isotype:	IgG
Cross-Reactivity (Details):	No cross reactivity with other proteins.
Characteristics:	<p>Rabbit IgG polyclonal antibody for Solute carrier family 2, facilitated glucose transporter member 5(SLC2A5) detection. Tested with WB, IHC-P in Human,Rat.</p> <p>Gene Name: solute carrier family 2 (facilitated glucose/fructose transporter), member 5</p> <p>Protein Name: Solute carrier family 2, facilitated glucose transporter member 5</p>

## Product Details

Purification: Immunogen affinity purified.

## Target Details

Target: SLC2A5

Alternative Name: SLC2A5 ([SLC2A5 Products](#))

Background: SLC2A5, also known as GLUT5 (Glucose transporter 5), is a fructose transporter expressed on the apical border of enterocytes in the small intestine. The GLUT5 gene is located on chromosome 1. GLUT5 allows for fructose to be transported from the intestinal lumen into the enterocyte by facilitated diffusion due to fructose's high concentration in the intestinal lumen. GLUT5 is also expressed in skeletal muscle, testis, kidney, fat tissue, and brain. Fructose malabsorption or Dietary Fructose Intolerance is a dietary disability of the small intestine, where the amount of fructose carrier in enterocytes is deficient.

Synonyms: Glucose Transporter 5 | GLUT5 | GLUT-5 | GTR5 | SLC 2A5 | SLC2A5 | P22732

Gene ID: 6518

UniProt: [P22732](#)

## Application Details

Application Notes: WB: Concentration: 0.1-0.5 µg/mL, Tested Species: Human, Rat  
IHC-P: Concentration: 0.5-1 µg/mL, Tested Species: Human, Rat, Epitope Retrieval by Heat: Boiling the paraffin sections in 10 mM citrate buffer, pH 6.0, for 20 mins is required for the staining of formalin/paraffin sections.  
Notes: Tested Species: Species with positive results. Other applications have not been tested. Optimal dilutions should be determined by end users.

Comment: Antibody can be supported by chemiluminescence kit ABIN921124 in WB, supported by ABIN921231 in IHC(P).

Restrictions: For Research Use only

## Handling

Format: Lyophilized

Reconstitution: Add 0.2 mL of distilled water will yield a concentration of 500 µg/mL.

Concentration: 500 µg/mL

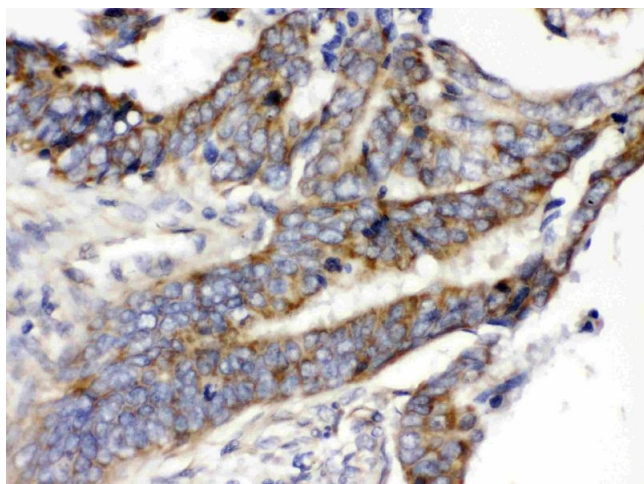
## Handling

Buffer:	Each vial contains 5 mg BSA, 0.9 mg NaCl, 0.2 mg Na <sub>2</sub> HPO <sub>4</sub> , 0.05 mg Sodium azide.
Preservative:	Sodium azide
Precaution of Use:	This product contains Sodium azide: a POISONOUS AND HAZARDOUS SUBSTANCE which should be handled by trained staff only.
Handling Advice:	Avoid repeated freezing and thawing.
Storage:	4 °C/-20 °C
Storage Comment:	At -20°C for one year. After reconstitution, at 4°C for one month. It can also be aliquotted and stored frozen at -20 °C for a longer time. Avoid repeated freezing and thawing.

## Publications

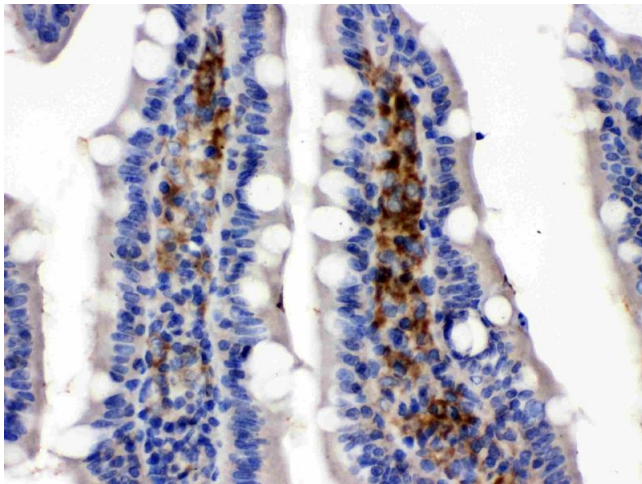
Product cited in:	Li, Li, Qi, Rychahou, Jafari, Huang: "The role of talin2 in breast cancer tumorigenesis and metastasis." in: <b>Oncotarget</b> , Vol. 8, Issue 63, pp. 106876-106887, (2017) ( <a href="#">PubMed</a> ).
-------------------	--

## Images



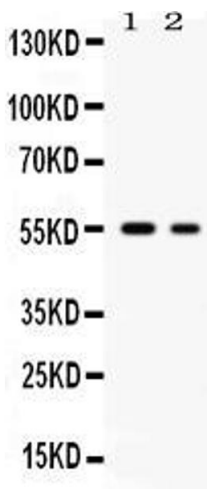
### Immunohistochemistry

**Image 1.** SLC2A5 was detected in paraffin-embedded sections of human intestinal cancer tissues using rabbit anti-SLC2A5 Antigen Affinity purified polyclonal antibody (Catalog # ) at 1 µg/mL. The immunohistochemical section was developed using SABC method (Catalog # SA1022).



### Immunohistochemistry

**Image 2.** SLC2A5 was detected in paraffin-embedded sections of rat intestine cancer tissues using rabbit anti-SLC2A5 Antigen Affinity purified polyclonal antibody (Catalog # ) at 1 µg/mL. The immunohistochemical section was developed using SABC method (Catalog # SA1022).



### Western Blotting

**Image 3.** Western blot analysis of SLC2A5 expression in rat brain extract ( Lane 1), and K562 whole cell lysates ( Lane 2). SLC2A5 at 55KD was detected using rabbit anti-SLC2A5 Antigen Affinity purified polyclonal antibody (Catalog # ) at 0.5 µg/mL. The blot was developed using chemiluminescence (ECL) method (Catalog # EK1002).