

Datasheet for ABIN4886745
anti-TLN2 antibody (Middle Region)

4 Images

1 Publication

[Go to Product page](#)

Overview

Quantity:	100 µg
Target:	TLN2
Binding Specificity:	AA 1787-1822, Middle Region
Reactivity:	Human, Mouse, Rat
Host:	Rabbit
Clonality:	Polyclonal
Application:	Western Blotting (WB), Immunohistochemistry (Paraffin-embedded Sections) (IHC (p))

Product Details

Purpose:	Rabbit IgG polyclonal antibody for Talin-2(TLN2) detection. Tested with WB, IHC-P in Human,Mouse,Rat.
Immunogen:	A synthetic peptide corresponding to a sequence in the middle region of human Talin 2 (1787-1822aa NPKAQHTHDAITEAAQLMKEAVDDIMVTLNEAASEV).
Sequence:	NPKAQHTHDA ITEAAQLMKE AVDDIMVTLN EAASEV
Isotype:	IgG
Cross-Reactivity (Details):	No cross reactivity with other proteins.
Characteristics:	Rabbit IgG polyclonal antibody for Talin-2(TLN2) detection. Tested with WB, IHC-P in Human,Mouse,Rat. Gene Name: talin 2 Protein Name: Talin-2
Purification:	Immunogen affinity purified.

Target Details

Target:	TLN2
Alternative Name:	TLN2 (TLN2 Products)
Background:	<p>Talin 2 is a protein in humans that is encoded by the TLN2 gene. It belongs to the talin protein family. This gene encodes a protein related to talin 1, a cytoskeletal protein that plays a significant role in the assembly of actin filaments and in spreading and migration of various cell types, including fibroblasts and osteoclasts. Talin-2 is expressed at high levels in cardiac muscle and functions to provide linkages between the extracellular matrix and actin cytoskeleton at costamere structures to transduce force laterally.</p> <p>Synonyms: Talin2 Talin 2 Talin-2 TLN2 TLN 2 TLN-2 ILWEQ Q9Y4G6</p>
Gene ID:	83660
UniProt:	Q9Y4G6
Pathways:	Cell-Cell Junction Organization, Maintenance of Protein Location

Application Details

Application Notes:	<p>WB: Concentration: 0.1-0.5 µg/mL, Tested Species: Human, Mouse, Rat</p> <p>IHC-P: Concentration: 0.5-1 µg/mL, Tested Species: Human, Mouse, Rat, Epitope Retrieval by Heat: Boiling the paraffin sections in 10 mM citrate buffer, pH 6.0, for 20 mins is required for the staining of formalin/paraffin sections.</p> <p>Notes: Tested Species: Species with positive results. Other applications have not been tested.</p> <p>Optimal dilutions should be determined by end users.</p>
Comment:	Antibody can be supported by chemiluminescence kit ABIN921124 in WB, supported by ABIN921231 in IHC(P).
Restrictions:	For Research Use only

Handling

Format:	Lyophilized
Reconstitution:	Add 0.2 mL of distilled water will yield a concentration of 500 µg/mL.
Concentration:	500 µg/mL
Buffer:	Each vial contains 5 mg BSA, 0.9 mg NaCl, 0.2 mg Na ₂ HPO ₄ , 0.05 mg Sodium azide.
Preservative:	Sodium azide

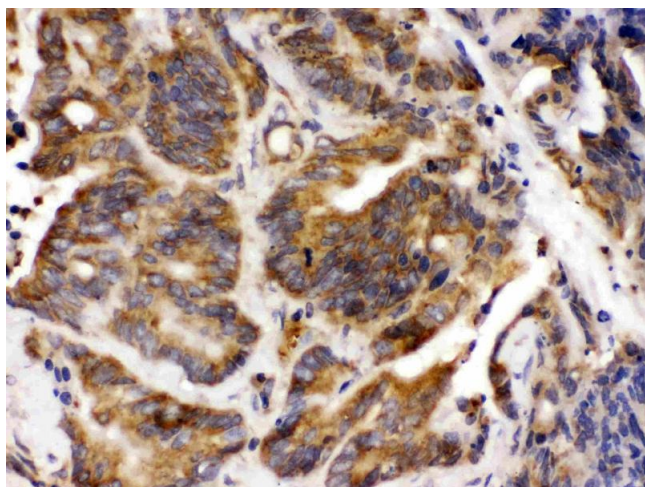
Handling

Precaution of Use:	This product contains Sodium azide: a POISONOUS AND HAZARDOUS SUBSTANCE which should be handled by trained staff only.
Handling Advice:	Avoid repeated freezing and thawing.
Storage:	4 °C/-20 °C
Storage Comment:	At -20°C for one year. After reconstitution, at 4°C for one month. It can also be aliquotted and stored frozen at -20 °C for a longer time. Avoid repeated freezing and thawing.

Publications

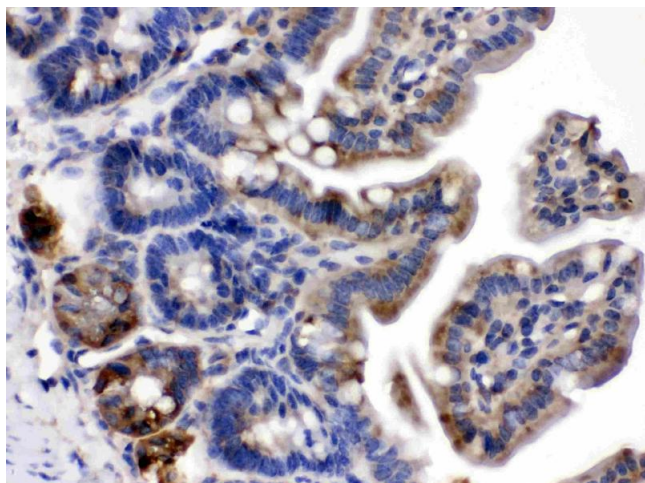
Product cited in:	Li, Li, Qi, Rychahou, Jafari, Huang: "The role of talin2 in breast cancer tumorigenesis and metastasis." in: Oncotarget , Vol. 8, Issue 63, pp. 106876-106887, (2017) (PubMed).
-------------------	--

Images



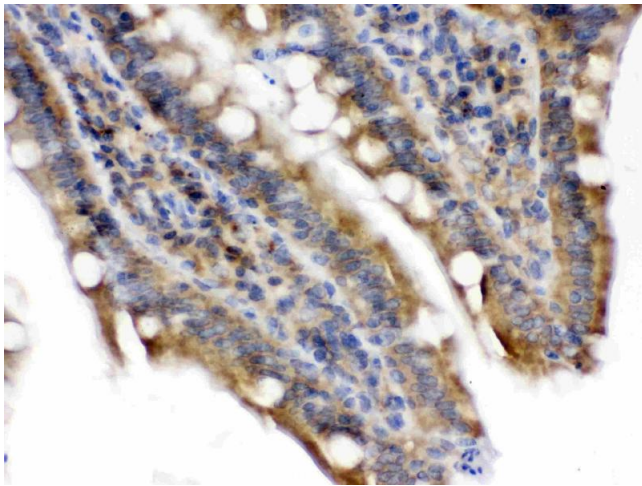
Immunohistochemistry

Image 1. Talin 2 was detected in paraffin-embedded sections of human intestinal cancer tissues using rabbit anti- Talin 2 Antigen Affinity purified polyclonal antibody (Catalog #) at 1 µg/mL. The immunohistochemical section was developed using SABC method (Catalog # SA1022).



Immunohistochemistry

Image 2. Talin 2 was detected in paraffin-embedded sections of mouse intestine tissues using rabbit anti- Talin 2 Antigen Affinity purified polyclonal antibody (Catalog #) at 1 µg/mL. The immunohistochemical section was developed using SABC method (Catalog # SA1022).



Immunohistochemistry

Image 3. Talin 2 was detected in paraffin-embedded sections of rat intestine tissues using rabbit anti- Talin 2 Antigen Affinity purified polyclonal antibody (Catalog #) at 1 µg/mL. The immunohistochemical section was developed using SABC method (Catalog # SA1022).

Please check the [product details page](#) for more images. Overall 4 images are available for ABIN4886745.