

Datasheet for ABIN4886763 anti-WDR1 antibody (C-Term)



[Go to Product page](#)

1 Image

Overview

Quantity:	100 µg
Target:	WDR1
Binding Specificity:	AA 552-579, C-Term
Reactivity:	Human, Mouse, Rat
Host:	Rabbit
Clonality:	Polyclonal
Application:	Western Blotting (WB)

Product Details

Purpose:	Rabbit IgG polyclonal antibody for WD repeat-containing protein 1(WDR1) detection. Tested with WB in Human,Mouse,Rat.
Immunogen:	A synthetic peptide corresponding to a sequence at the C-terminus of human WDR1 (552-579aa MDMMVYVWTLSDPETRVKIQDAHRLHHV), different from the related mouse and rat sequences by one amino acid.
Sequence:	MDMMVYVWTL SDPETRVKIQ DAHRLHHV
Isotype:	IgG
Cross-Reactivity (Details):	No cross reactivity with other proteins.
Characteristics:	Rabbit IgG polyclonal antibody for WD repeat-containing protein 1(WDR1) detection. Tested with WB in Human,Mouse,Rat. Gene Name: WD repeat domain 1 Protein Name: WD repeat-containing protein 1

Product Details

Purification: Immunogen affinity purified.

Target Details

Target: WDR1

Alternative Name: WDR1 ([WDR1 Products](#))

Background: WD repeat-containing protein 1 is a protein that in humans is encoded by the WDR1 gene. It is mapped to 4p16.1. This gene encodes a protein containing 9 WD repeats. WD repeats are approximately 30- to 40-amino acid domains containing several conserved residues, mostly including a trp-asn at the C-terminal end. WD domains are involved in protein-protein interactions. The encoded protein may help induce the disassembly of actin filaments. Two transcript variants encoding different isoforms have been found for this gene.

Synonyms: AIP1 | NORI 1 | NORI-1 | wdr1 | O75083

Gene ID: 9948

UniProt: [O75083](#)

Pathways: [Sensory Perception of Sound](#)

Application Details

Application Notes: WB: Concentration: 0.1-0.5 µg/mL, Tested Species: Human, Mouse, Rat
Notes: Tested Species: Species with positive results.
Other applications have not been tested. Optimal dilutions should be determined by end users.

Comment: Antibody can be supported by chemiluminescence kit ABIN921124 in WB.

Restrictions: For Research Use only

Handling

Format: Lyophilized

Reconstitution: Add 0.2 mL of distilled water will yield a concentration of 500 µg/mL.

Concentration: 500 µg/mL

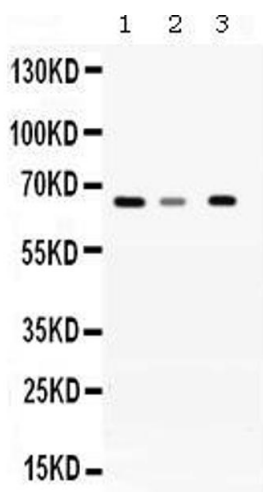
Buffer: Each vial contains 5 mg BSA, 0.9 mg NaCl, 0.2 mg Na₂HPO₄, 0.05 mg Sodium azide.

Preservative: Sodium azide

Handling

Precaution of Use:	This product contains Sodium azide: a POISONOUS AND HAZARDOUS SUBSTANCE which should be handled by trained staff only.
Handling Advice:	Avoid repeated freezing and thawing.
Storage:	4 °C/-20 °C
Storage Comment:	At -20°C for one year. After reconstitution, at 4°C for one month. It can also be aliquotted and stored frozen at -20 °C for a longer time. Avoid repeated freezing and thawing.

Images



Western Blotting

Image 1. Western blot analysis of WDR1 expression in rat liver extract (Lane 1), mouse brain extract (Lane 2) and A431 whole cell lysates (Lane 3). WDR1 at 66KD was detected using rabbit anti-WDR1 Antigen Affinity purified polyclonal antibody (Catalog #) at 0.5 µg/mL. The blot was developed using chemiluminescence (ECL) method (Catalog # EK1002).