



[Go to Product page](#)

Datasheet for ABIN4888493  
**anti-Keratin Basic antibody**

1 Image

### Overview

Quantity:	0.1 mg
Target:	Keratin Basic
Reactivity:	Human, Rat, Mouse, Rabbit, Cow, Chicken, Non-Human Primate
Host:	Mouse
Clonality:	Monoclonal
Conjugate:	Un-conjugated
Application:	Western Blotting (WB), Immunohistochemistry (Paraffin-embedded Sections) (IHC (p)), Immunohistochemistry (Frozen Sections) (IHC (fro))

### Product Details

Immunogen:	Human epidermal keratins
Clone:	AE3
Isotype:	IgG1
Specificity:	Mouse monoclonal antibody AE3 recognizes all basic type cytokeratins (intracellular antigens), namely K1-K8 (58-67 kDa). This antibody reacts with all layers of epidermis (basal layer and above) and is an excellent marker for distinguishing carcinomas from non-epithelial tumours.
Cross-Reactivity (Details):	Human, Non-Human Primates, Mouse, Rat, Bovine, Rabbit, Chicken
Purification:	Purified by protein-A affinity chromatography.
Purity:	> 95 % (by SDS-PAGE)

## Target Details

Target: Keratin Basic

Alternative Name: Basic Cytokeratins ([Keratin Basic Products](#))

Background: Cytokeratins are a subfamily of intermediate filaments and are characterized by remarkable biochemical diversity. Cytokeratins are represented in epithelial tissues by at least 20 different polypeptides, molecular weight between 40 kDa and 68 kDa. The individual cytokeratin polypeptides are designated 1 to 20 and divided into the type I (acidic cytokeratins 9-20) and type II (basic to neutral cytokeratins 1-8) families., Type II cytokeratins

## Application Details

Application Notes: Western blotting: Recommended dilution: 1-2 µg/mL.

Restrictions: For Research Use only

## Handling

Concentration: 1 mg/mL

Buffer: Phosphate buffered saline (PBS), pH 7.4, 15 mM sodium azide

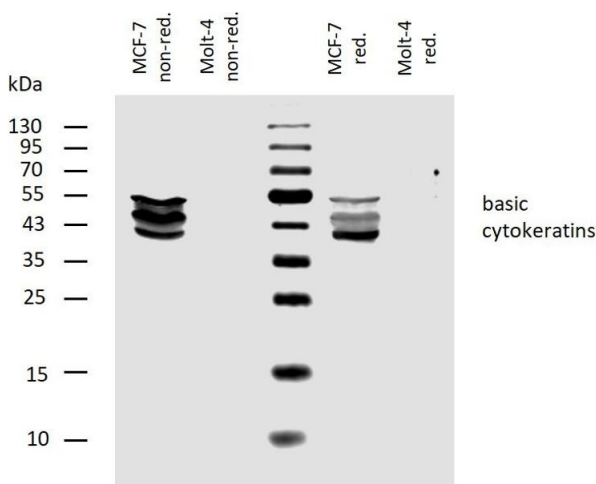
Preservative: Sodium azide

Precaution of Use: This product contains Sodium azide: a POISONOUS AND HAZARDOUS SUBSTANCE which should be handled by trained staff only.

Storage: 4 °C

Storage Comment: Store at 2-8°C. Do not freeze.

## Images



### Western Blotting

**Image 1.** Western blotting analysis of human basic cytokeratins using mouse monoclonal antibody AE3 on lysates of MCF-7 cell line and Molt-4 cell line (cytokeratin non-expressing cell line, negative control) under non-reducing and reducing conditions. Nitrocellulose membrane was probed with 2 µg/mL of mouse anti-basic cytokeratins monoclonal antibody followed by IRDye800-conjugated anti-mouse secondary antibody. Specific bands were detected

for basic cytokeratins at approximately 40-55 kDa.