



[Go to Product page](#)

Datasheet for ABIN4888494

## anti-PVRL1 antibody

### 1 Image

#### Overview

Quantity:	0.1 mg
Target:	PVRL1
Reactivity:	Human
Host:	Mouse
Clonality:	Monoclonal
Conjugate:	This PVRL1 antibody is un-conjugated
Application:	Western Blotting (WB), Flow Cytometry (FACS), Immunohistochemistry (IHC), Immunoprecipitation (IP), Immunocytochemistry (ICC)

#### Product Details

Immunogen:	NIH/3T3 cells transfected with human CD111
Clone:	R1-302
Isotype:	IgG1 kappa
Specificity:	The mouse monoclonal antibody R1.302 recognizes an extracellular epitope on CD111 (also known as Nectin 1), a 75 kDa type I transmembrane glycoprotein broadly expressed on endothelial cells, epithelial cells, neuronal cells, megakaryocytes, and CD34-positive stem cells.
Cross-Reactivity (Details):	Human
Purification:	Purified by protein-A affinity chromatography.
Purity:	> 95 % (by SDS-PAGE)

## Target Details

---

Target:	PVRL1
Alternative Name:	CD111 ( <a href="#">PVRL1 Products</a> )
Background:	Nectin cell adhesion molecule 1,CD111, also known as nectin-1, is a calcium-independent cell-cell adhesion transmembrane glycoprotein involved in organization of adherens junctions and tight junctions in epithelial and endothelial cells. It also serves as a target molecule for entry of herpes simplex virus (HSV-1, HSV-2) and pseudorabies virus (PRV) into epithelial and neuronal cells. CD111 is connected with actin cytoskeleton through afadin. Mutations in the gene for CD111 cause cleft lip and palate/ectodermal dysplasia 1 syndrome (CLPED1) as well as non-syndromic cleft lip with or without cleft palate (CL/P). Alternative splicing results in multiple transcript variants encoding proteins with distinct C-termini.,NECTIN1, ED4, HlgR, HV1S, HVEC, OFC7, PRR1, PVRR, CD111, PVRL1, PVRR1, SK-12, CLPED1
Gene ID:	5818
UniProt:	<a href="#">Q15223</a>
Pathways:	<a href="#">Cell-Cell Junction Organization</a>

## Application Details

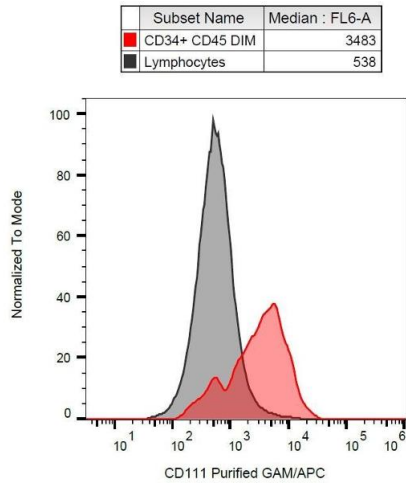
---

Application Notes:	Flow cytometry: Recommended dilution: 1-4 µg/mL.
Restrictions:	For Research Use only

## Handling

---

Concentration:	1 mg/mL
Buffer:	Phosphate buffered saline (PBS), pH 7.4, 15 mM sodium azide
Preservative:	Sodium azide
Precaution of Use:	This product contains Sodium azide: a POISONOUS AND HAZARDOUS SUBSTANCE which should be handled by trained staff only.
Storage:	4 °C
Storage Comment:	Store at 2-8°C. Do not freeze.



## Flow Cytometry

**Image 1.** Surface staining of human peripheral blood with anti-human CD111 (R1.302) purified, GAM-APC.