

Datasheet for ABIN4888579
anti-Chymotrypsin antibody



[Go to Product page](#)

1 Image

Overview

| | |
|--------------|---|
| Quantity: | 100 µg |
| Target: | Chymotrypsin (CTRL) |
| Reactivity: | Human |
| Host: | Mouse |
| Clonality: | Monoclonal |
| Conjugate: | This Chymotrypsin antibody is un-conjugated |
| Application: | Western Blotting (WB), ELISA |

Product Details

| | |
|-------------------|---|
| Purpose: | Anti-Chymotrypsin Mouse Monoclonal Antibody |
| Immunogen: | Purified human pancreatic chymotrypsin. |
| Clone: | CHY10-101-2 |
| Isotype: | IgG1 |
| Cross-Reactivity: | Human |

Target Details

| | |
|-------------------|---|
| Target: | Chymotrypsin (CTRL) |
| Alternative Name: | Chymotrypsin (CTRL Products) |
| Target Type: | Chemical |
| Background: | Chymotrypsin-C,Regulates activation and degradation of trypsinogens and |

Target Details

procarboxypeptidases by targeting specific cleavage sites within their zymogen precursors.
Has chymotrypsin-type protease activity and hypocalcemic activity. {PubMed:23430245}.,EC
3.4.21.2, Caldecrin

UniProt: [Q99895](#)

Application Details

Application Notes: ELISA: These antibodies have been qualified for use in ELISA to detect human pancreatic chymotrypsin.
Immunohistochemistry: Catalog no. 13604 has been qualified for detecting human pancreatic chymotrypsin in paraffin-embedded tissue.

Restrictions: For Research Use only

Handling

Format: Liquid

Reconstitution: Dilute in PBS or medium that is identical to that used in the assay system.

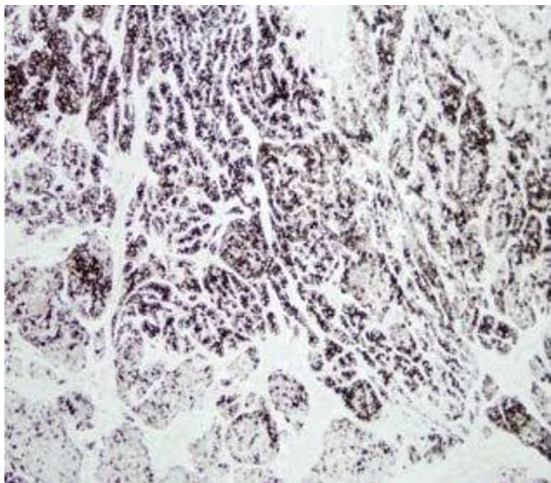
Concentration: Lot specific

Buffer: PBS, pH 7.4

Storage: -20 °C,-80 °C

Storage Comment: These antibodies are stable for at least one (1) year at -20°C to -70°C. Store product in appropriate aliquots to avoid multiple freeze-thaw cycles.

Images



Immunohistochemistry

Image 1. Paraffin-embedded human pancreas