

Datasheet for ABIN4889787

**SERPINB3 ELISA Kit****1** Image[Go to Product page](#)

## Overview

Quantity:	96 tests
Target:	SERPINB3
Reactivity:	Human
Method Type:	Sandwich ELISA
Detection Range:	0.156-10 ng/mL
Minimum Detection Limit:	0.156 ng/mL
Application:	ELISA

## Product Details

Purpose:	Human Serpin B3/SCCA1 ELISA Kit for Serum, Plasma, and Cell Culture Supernatants.
Sample Type:	Plasma, Cell Culture Supernatant, Serum
Analytical Method:	Quantitative
Detection Method:	Colorimetric
Specificity:	This ELISA antibody pair recognizes Human Serpin B3.
Sensitivity:	0.15 ng/mL
Characteristics:	<ul style="list-style-type: none"><li>• Strip plates and additional reagents allow for use in multiple experiments</li><li>• Quantitative protein detection</li><li>• Establishes normal range</li><li>• The best products for confirmation of antibody array data</li></ul>
Components:	<ul style="list-style-type: none"><li>• Pre-Coated 96-well Strip Microplate</li></ul>

## Product Details

---

- Wash Buffer
- Stop Solution
- Assay Diluent(s)
- Lyophilized Standard
- Biotinylated Detection Antibody
- Streptavidin-Conjugated HRP
- TMB One-Step Substrate

---

### Material not included:

- Distilled or deionized water
- Precision pipettes to deliver 2  $\mu$ L to 1  $\mu$ L volumes
- Adjustable 1-25  $\mu$ L pipettes for reagent preparation
- 100  $\mu$ L and 1 liter graduated cylinders
- Tubes to prepare standard and sample dilutions
- Absorbent paper
- Microplate reader capable of measuring absorbance at 450nm
- Log-log graph paper or computer and software for ELISA data analysis

## Target Details

---

Target:	SERPINB3
Alternative Name:	Serpin B3 (SCCA1) ( <a href="#">SERPINB3 Products</a> )
Gene ID:	6317
UniProt:	<a href="#">P29508</a>

## Application Details

---

Application Notes:	Optimal working dilution should be determined by the investigator.
Sample Volume:	100 $\mu$ L
Plate:	Pre-coated
Protocol:	<ol style="list-style-type: none"><li>1. Prepare all reagents, samples and standards as instructed in the manual.</li><li>2. Add 100 <math>\mu</math>L of standard or sample to each well.</li><li>3. Incubate 2.5 h at RT or O/N at 4 <math>^{\circ}</math>C.</li><li>4. Add 100 <math>\mu</math>L of prepared biotin antibody to each well.</li><li>5. Incubate 1 h at RT.</li><li>6. Add 100 <math>\mu</math>L of prepared Streptavidin solution to each well.</li><li>7. Incubate 45 min at RT.</li><li>8. Add 100 <math>\mu</math>L of TMB One-Step Substrate Reagent to each well.</li><li>9. Incubate 30 min at RT.</li><li>10. Add 50 <math>\mu</math>L of Stop Solution to each well.</li></ol>

## Application Details

---

11. Read at 450 nm immediately.

Reagent Preparation: Recommended Dilution for serum and plasma samples 2 fold

Restrictions: For Research Use only

## Handling

---

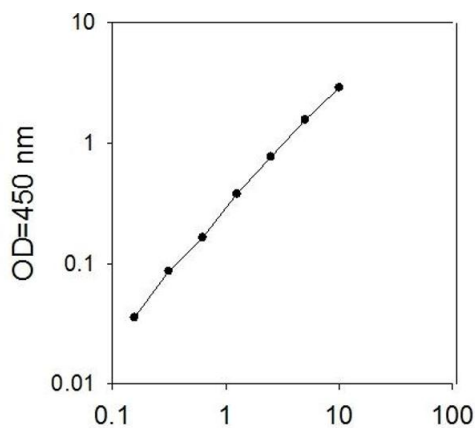
Storage: -20 °C

Storage Comment: The entire kit may be stored at -20°C for up to 1 year from the date of shipment. Avoid repeated freeze-thaw cycles. The kit may be stored at 4°C for up to 6 months. For extended storage, it is recommended to store at -80°C.

Expiry Date: 6 months

## Images

---



Human Serpin B3/SCCA1 concentration (ng/ml)

### ELISA

**Image 1.** Standard Curve