

Datasheet for ABIN4889797
TBK1 ELISA Kit

2 Images

[Go to Product page](#)

Overview

Quantity:	96 tests
Target:	TBK1
Binding Specificity:	pSer172, total
Reactivity:	Human, Mouse, Rat
Method Type:	Sandwich ELISA
Application:	ELISA

Product Details

Purpose:	Human, Mouse and Rat Phospho-TBK1 (Ser172) and Total TBK1 ELISA Kit. This assay semi-quantitatively measures TBK1 phosphorylated at Serine-172 as well as total TBK1 in cell lysate samples.
Sample Type:	Cell Culture Lysate
Analytical Method:	Semi-Quantitative
Detection Method:	Colorimetric
Specificity:	This ELISA kit recognizes Human, Mouse and Rat TBK1 phosphorylated at site Serine-172 as well as total TBK1.
Characteristics:	<ul style="list-style-type: none">• Simultaneously measure Phosphorylated protein and pan protein in one experiment (for normalization purpose)• Screen numerous different cell lysates without performing a Western Blot analysis• Minimal hands-on time, convenient, and non-radioactive material
Components:	<ul style="list-style-type: none">• Pre-Coated 96-well Strip Microplate

Product Details

- Wash Buffer
- Anti-Phospho Antibody
- Anti-Pan Antibody
- HRP-Conjugated Secondary Antibody
- Streptavidin-Conjugated HRP
- Assay Diluent
- TMB One-Step Substrate
- Stop Solution
- Lysis Buffer
- Positive Control Sample

Material not included:

- Distilled or deionized water
- 100 mL and 1 liter graduated cylinders
- Tubes to prepare sample dilutions
- Protease and Phosphatase inhibitors
- Precision pipettes to deliver 2 µL to 1 mL volumes
- Adjustable 1-25 mL pipettes for reagent preparation
- Benchtop rocker or shaker
- Microplate reader capable of measuring absorbance at 450 nm

Target Details

Target: TBK1

Alternative Name: TBK1 ([TBK1 Products](#))

Gene ID: 29110

UniProt: [Q9UHD2](#), [Q9WUN2](#)

Pathways: [TLR Signaling](#), [Activation of Innate immune Response](#), [Hepatitis C](#), [Toll-Like Receptors Cascades](#), [SARS-CoV-2 Protein Interactome](#)

Application Details

Application Notes: Optimal working dilution should be determined by the investigator.

Sample Volume: 100 µL

Plate: Pre-coated

Protocol:

1. Prepare all reagents and samples as instructed in the manual.
2. Add 100 µL of sample or positive control to each well.
3. Incubate 2.5 h at RT or O/N at 4 °C.
4. Add 100 µL of prepared primary antibody to each well.

Application Details

- 5. Incubate 1 h at RT.
- 6. Add 100 µL of prepared 1X HRP-Streptavidin to each well.
- 7. Incubate 1 h at RT.
- 8. Add 100 µL of TMB One-Step Substrate Reagent to each well.
- 9. Incubate 30 min at RT.
- 10. Add 50 µL of Stop Solution to each well.
- 11. Read at 450 nm immediately.

Restrictions: For Research Use only

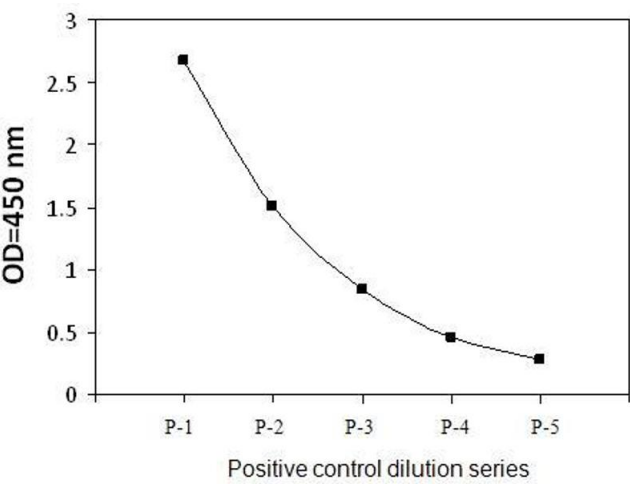
Handling

Storage: -20 °C

Storage Comment: Upon receipt, the kit should be stored at -20 °C. Please use within 6 months from the date of shipment. After initial use, Wash Buffer Concentrate (Item B), Assay Diluent (Item E), TMB One-Step Substrate Reagent (Item H), HRP-Streptavidin (Item G), Stop Solution (Item I) and Cell Lysate Buffer (Item J) should be stored at 4 °C to avoid repeated freeze-thaw cycles. Return unused wells to the pouch containing desiccant pack, reseal along entire edge and store at -20 °C. Reconstituted Positive Control (Item K) should be stored at -70 °C.

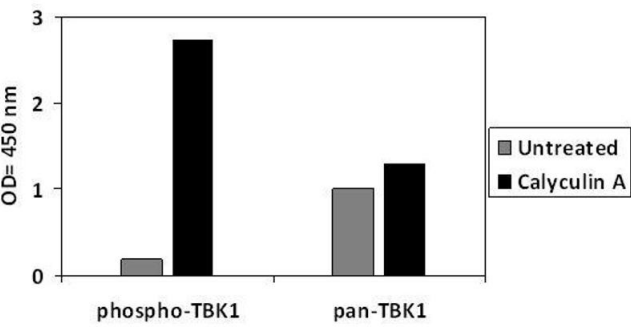
Expiry Date: 6 months

Images



ELISA

Image 1. HeLa cells were treated with Calyculin A. Solubilize cells at 4×10^7 cells/ml in Cell Lysate Buffer. Serial dilutions of lysates were analyzed in this ELISA.



ELISA

Image 2. HeLa cells were treated or untreated with Calyculin A. Cell lysates were analyzed using this phosphoELISA and Western Blot.