



[Go to Product page](#)

Datasheet for ABIN4889908
anti-Cnpase antibody

3 Images

Overview

Quantity:	100 µg
Target:	Cnpase (CNP)
Reactivity:	Mouse, Rat
Host:	Mouse
Clonality:	Monoclonal
Conjugate:	This Cnpase antibody is un-conjugated
Application:	Western Blotting (WB), Immunohistochemistry (IHC), Immunocytochemistry (ICC)

Product Details

Clone:	335C6
Isotype:	IgG2a
Purification:	purified IgG

Target Details

Target:	Cnpase (CNP)
Alternative Name:	CNP 1 (CNP Products)
Background:	Synonyms: CNP, CNPase

Application Details

Application Notes:	Optimal working dilution should be determined by the investigator. This product is not tested in
--------------------	--

Application Details

IP yet.

Restrictions: For Research Use only

Handling

Format: Lyophilized

Buffer: Contains 0.02 % sodium azide

Preservative: Sodium azide

Precaution of Use: This product contains Sodium azide: a POISONOUS AND HAZARDOUS SUBSTANCE which should be handled by trained staff only.

Handling Advice: Do not store diluted antibody solutions unless you add detergent or carrier proteins such as goat serum, BSA or others. IgG sticks to glass and plastic. Any IgG solution below 0.1 mg/mL protein will quickly adsorb and denature and thus lose activity! Repetitive freeze-thawing of dilute purified IgG is almost certain to lead to substantial losses.

Storage: -20 °C

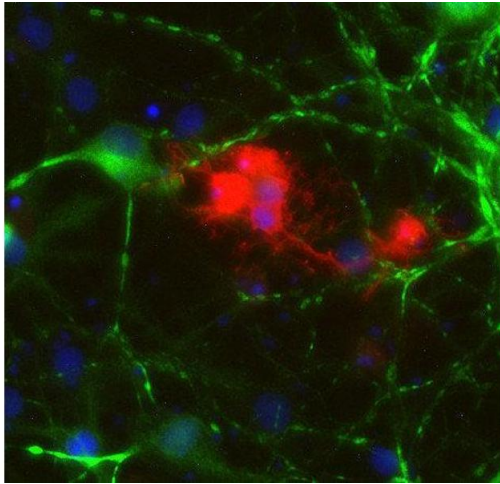
Storage Comment: Unlabeled antibodies are stable in this form without loss of quality at ambient temperatures for several weeks or even months. They can be stored at 4 °C for several years.

Images



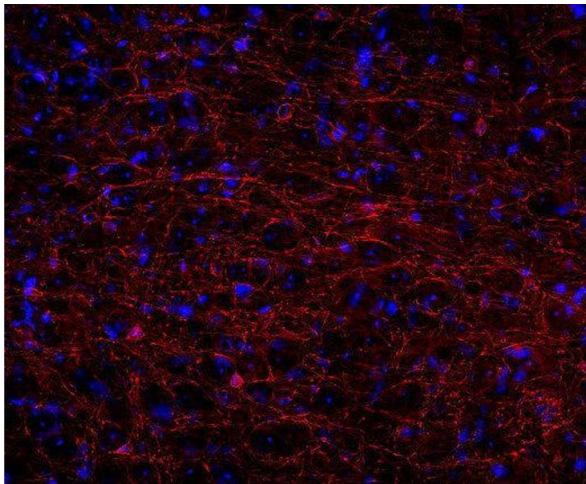
Western Blotting

Image 1. dilution: 1 : 1000, sample: rat brain homogenate



Immunocytochemistry

Image 2. Indirect immunostaining of PFA fixed rat hippocampus neurons and oligodendrocytes with anti-CNP 1 (dilution 1 : 500; red) and rabbit anti-MAP 2 (cat. no. 188 002, dilution 1 : 1000; green). Nuclei have been visualized by DAPI staining (blue).



Immunohistochemistry

Image 3. Indirect immunostaining of PFA fixed rat brain section (dilution 1 : 500; red). Nuclei have been visualized by DAPI staining (blue).