



Datasheet for ABIN4889926

## anti-SYPL1 antibody



[Go to Product page](#)

### 3 Images

#### Overview

Quantity:	200 µL
Target:	SYPL1
Reactivity:	Mouse, Rat
Host:	Rabbit
Clonality:	Polyclonal
Conjugate:	This SYPL1 antibody is un-conjugated
Application:	Western Blotting (WB), Immunohistochemistry (IHC), Immunocytochemistry (ICC)

#### Product Details

Purification: antiserum

#### Target Details

Target:	SYPL1
Alternative Name:	Pantophysin ( <a href="#">SYPL1 Products</a> )
Background:	Synonyms: Synaptophysin-like protein 1

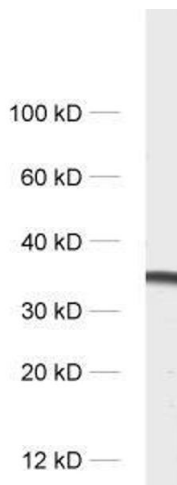
#### Application Details

Application Notes:	Optimal working dilution should be determined by the investigator. This product is not tested in IP yet.
Restrictions:	For Research Use only

## Handling

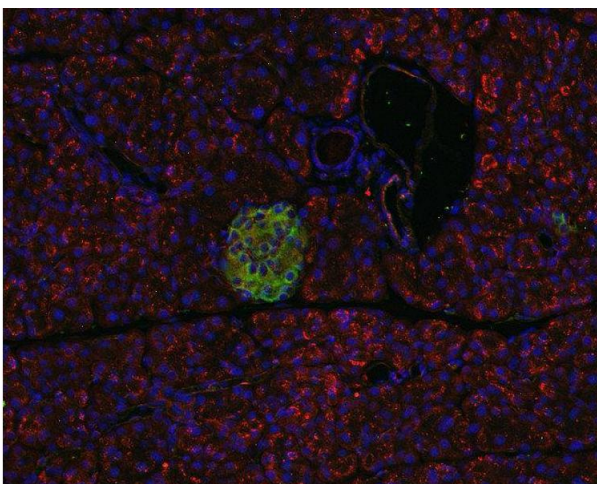
Format:	Liquid
Handling Advice:	<p>Crude antisera are more robust than monoclonals. With anti-microbials added, they may be stored at 4 °C.</p> <p>Serum does not contain active proteases, in fact, serum itself contains a powerful cocktail of protease inhibitors. Frozen storage (-20 °C), however, is preferable.</p>
Storage:	4 °C/-20 °C
Storage Comment:	Unlabeled antibodies are stable in this form without loss of quality at ambient temperatures for several weeks or even months. They can be stored at 4 °C for several years.

## Images



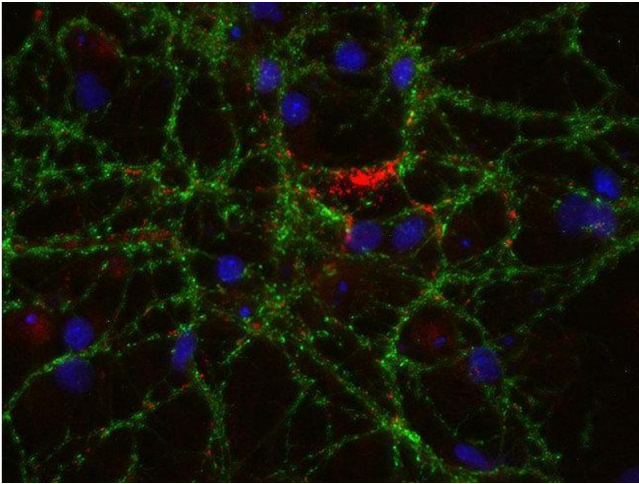
### Western Blotting

**Image 1.** dilution: 1 : 1000, sample: rat brain homogenate



### Immunohistochemistry (Paraffin-embedded Sections)

**Image 2.** Indirect immunostaining of PFA fixed, paraffin embedded pancreas section with anti-pantophysin (dilution 1 : 500; red) and guinea pig anti-VAMP 1/2/3 (cat. no. 104 104, dilution 1 : 500; green). Nuclei have been visualized by DAPI staining (blue).



### Immunocytochemistry

**Image 3.** Indirect immunostaining of PFA fixed rat hippocampus neurons with anti-pantophysin (dilution 1 : 500; red) and mouse anti-synapsin 1 (cat. no. 106 001, dilution 1 : 500; green). Nuclei have been visualized by DAPI staining (blue).