

Datasheet for ABIN4889930

Rabbit anti-Human IgG lambda (Light Chain) Antibody[Go to Product page](#)**2** Images

Overview

Quantity:	50 µg
Target:	IgG lambda
Binding Specificity:	Light Chain
Reactivity:	Human
Host:	Rabbit
Clonality:	Polyclonal
Application:	Immunohistochemistry (IHC), Western Blotting (WB)

Product Details

Purification:	affinity purified
---------------	-------------------

Target Details

Target:	IgG lambda
---------	------------

Application Details

Application Notes:	Optimal working dilution should be determined by the investigator. This product is not tested in IP yet. This product is not tested in ICC yet.
Restrictions:	For Research Use only

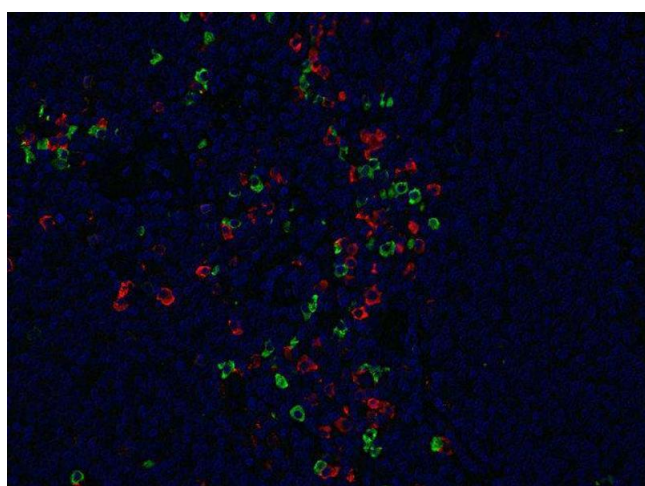
Handling

Format:	Lyophilized
---------	-------------

Handling

Handling Advice:	Affinity purified antibodies are less robust than antisera, since protease inhibitors are also removed during purification. Hence, storage at 4 °C for prolonged periods (i.e. several weeks), is not recommended.
Storage:	-20 °C
Storage Comment:	Unlabeled lyophilized antibodies are stable in this form without loss of quality at ambient temperatures for several weeks or even months. They can be stored at 4°C for several years. Lyophilized antibodies must not be stored in the freezer, they may be destroyed!

Images



Immunohistochemistry (Paraffin-embedded Sections)

Image 1. Indirect immunostaining of formalin-fixed paraffin embedded human tonsil section with anti- λ light chain (dilution 1 : 200; green) and mouse anti- κ light chain (cat. no. 346 011, dilution 1 : 200; red). Immunoreactive structures on B-cells have been revealed with fluorochromated secondary antibodies. Nuclei have been visualized by DAPI staining (blue).



Western Blotting

Image 2. dilution: 1 : 1000, sample: protein G fraction of human serum